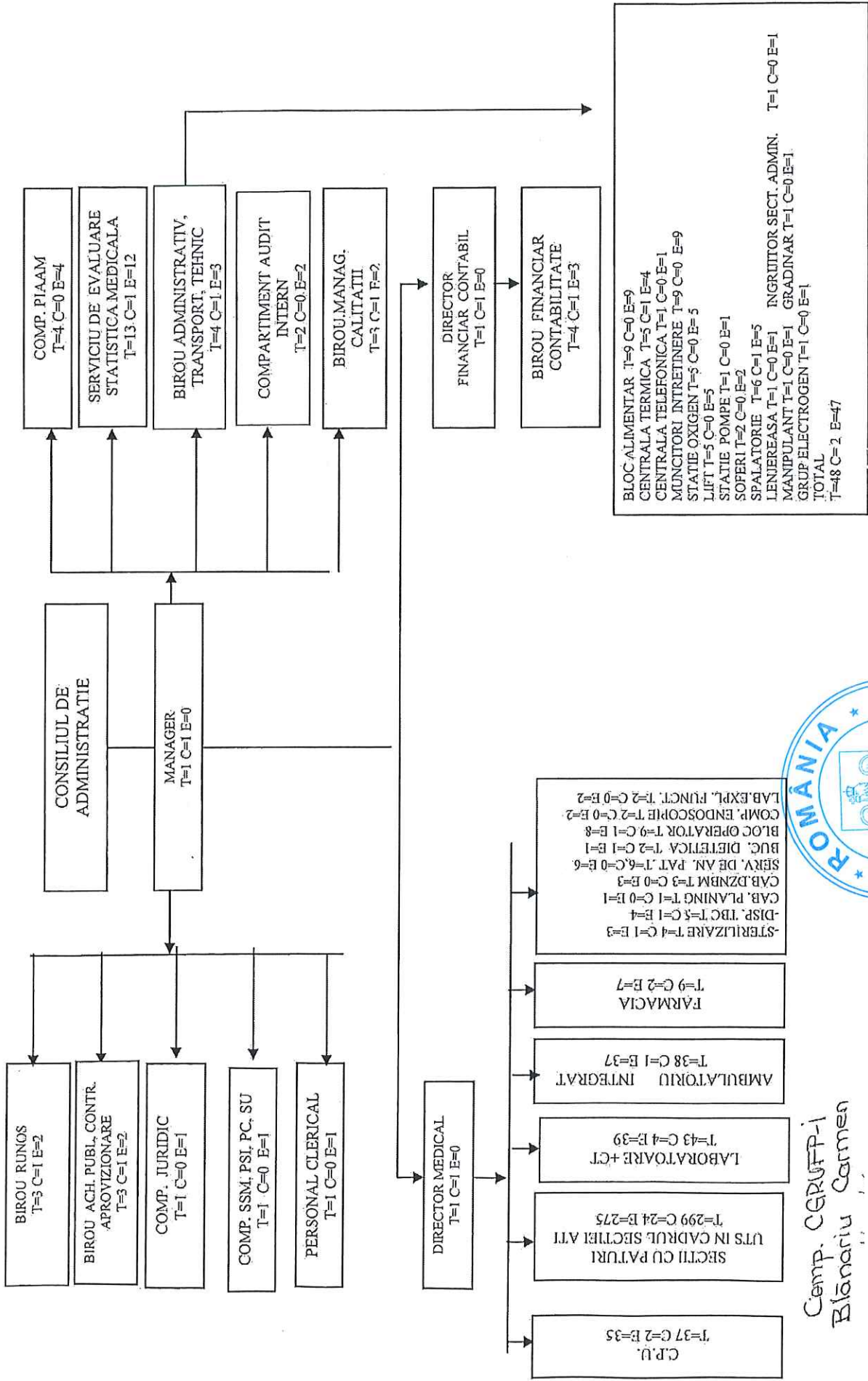


ORGANIGRAMA SPITALULUI MUNICIPAL „DIMITRIE CASTROIAN” HUSI
 TOTAL POSTURI=550; DIN CARE POSTURI CONDUCERE=48; TOTAL POSTURI EXECUTIE=502



Comp. CGRUFF-i
 Blănaru Carmen

Președinte de ședință,
 Ioan Iacob



Secretar general,
 jr. Monica Dumitrașcu

STAT DE FUNCȚII

pentru Spitalul Municipal "Dimitrie Castrolan" Husi

Nr. crt.	COMPARTIMENT/FUNCȚIE	Nivel de studii	Quantum post	Posturi normale	Posturi ocupate	Posturi vacante
I.COMITET DIRECTOR						
				3	2	1
1	MANAGER, GR. II	S	1	1	1	0
2	DIRECTOR MEDICAL GR. II	S	1	1	0	1
3	DIRECTOR FINANCIAR CONTABIL, G S	S	1	1	1	0
II. BIROU MANAGEMENT AL CALITATII-POSTURI FIXE GENERALE						
				3	1	2
4	MEDIC PRIMAR SEF BIROU GR. II	S	1	1	0	1
5	REFERENT DE SPECIALITATE GR. II	S	1	1	1	0
6	CONSILIER GR III	S	1	1	0	1
III. COMPARTIMENT AUDIT PUBLIC INTERN-POSTURI FIXE GENERALE						
				2	1	1
7	AUDITOR I	S	1	1	1	0
8	AUDITOR II	S	1	1	0	1
IV. SECTIA MEDICINA INTERNA-35 paturi din care COMPARTIMENT DZNBM 5 paturi						
COMPARTIMENT NEFROLOGIE 5paturi						
				26	18	8
9	MEDIC SEF SECTIE , GR.I	S	1	1	0	1
10	MEDIC PRIMAR	S	1	1	1	0
11	MEDIC SPECIALIST	S	1	1	1	0
12	MEDIC SPECIALIST	S	1	1	0	1
13	MEDIC PRIMAR	S	1	1	0	1
14	MEDIC SPECIALIST	S	1	1	1	0
15	ASISTENT MEDICAL PRINCIPAL	PL	1	1	1	0
16	ASISTENT MEDICAL PRINCIPAL SEF	PL	1	1	0	1
17	ASISTENT MEDICAL PRINCIPAL	PL	1	1	1	0
18	ASISTENT MEDICAL PRINCIPAL	PL	1	1	1	0
19	ASISTENT MEDICAL PRINCIPAL	PL	1	1	1	0
20	ASISTENT MEDICAL PRINCIPAL	PL	1	1	1	0
21	ASISTENT MEDICAL	PL	1	1	0	1
22	ASISTENT MEDICAL PRINCIPAL	PL	1	1	1	0
23	ASISTENT MEDICAL	S	1	1	1	0
24	ASISTENT MEDICAL	PL	1	1	1	0
25	ASISTENT MEDICAL PRINCIPAL	PL	1	1	1	0
26	INFIRMIERA	M	1	1	1	0
27	INFIRMIERA	M	1	1	1	0
28	INFIRMIERA	M	1	1	1	0
29	INFIRMIERA	M	1	1	1	0
30	INFIRMIERA	M	1	1	1	0
31	INFIRMIERA	M	1	1	0	1
32	INGRIJITOARE	G/M	1	1	1	0
33	INGRIJITOARE	G/M	1	1	0	1
34	INGRIJITOARE	G/M	1	1	0	1

V.SECTIA MEDICINA INTERNA CRONICI-25 paturi				20	15	5
35	MEDIC SEF SECTIE ,GR.I	S	1	1	0	1
36	MEDIC PRIMAR	S	1	1	1	0
37	ASISTENT MEDICAL PRINCIPAL SEF	PL	1	1	0	1
38	ASISTENT MEDICAL PRINCIPAL	PL	1	1	1	0
39	ASISTENT MEDICAL PRINCIPAL	S	1	1	1	0
40	ASISTENT MEDICAL PRINCIPAL	PL	1	1	1	0
41	ASISTENT MEDICAL PRINCIPAL	PL	1	1	1	0
42	ASISTENT MEDICAL PRINCIPAL	PL	1	1	1	0
43	ASISTENT MEDICAL PRINCIPAL	PL	1	1	1	0
44	ASISTENT MEDICAL PRINCIPAL	PL	1	1	1	0
45	INFIRMIERA	M	1	1	1	0
46	INFIRMIERA	M	1	1	1	0
47	INFIRMIERA	M	1	1	1	0
48	INFIRMIERA	M	1	1	1	0
49	INFIRMIERA	M	1	1	1	0
50	INFIRMIERA	M	1	1	1	0
51	INFIRMIERA	M	1	1	1	0
52	INFIRMIERA	M	1	1	0	1
53	INGRIJITOARE	M	1	1	0	1
54	INGRIJITOARE	G/M	1	1	0	1

VI. SECTIA NEUROLOGIE-25 paturi din care 3 paturi cronici

VI. SECTIA NEUROLOGIE-25 paturi din care 3 paturi cronici				29	21	8
55	MEDIC SEF SECTIE GR.I	S	1	1	0	1
56	MEDIC PRIMAR	S	1	1	1	0
57	MEDIC REZIDENT	S	1	1	1	0
58	MEDIC SPECIALIST	S	1	1	1	0
59	ASISTENT MEDICAL PRINCIPAL SEF	PL	1	1	0	1
60	ASISTENT MEDICAL PRINCIPAL	S	1	1	1	0
61	ASISTENT MEDICAL PRINCIPAL	S	1	1	1	0
62	ASISTENT MEDICAL PRINCIPAL	PL	1	1	1	0
63	ASISTENT MEDICAL PRINCIPAL	PL	1	1	1	0
64	ASISTENT MEDICAL PRINCIPAL	PL	1	1	1	0
65	ASISTENT MEDICAL PRINCIPAL	PL	1	1	1	0
66	ASISTENT MEDICAL PRINCIPAL	PL	1	1	1	0
67	ASISTENT MEDICAL PRINCIPAL	PL	1	1	1	0
68	ASISTENT MEDICAL PRINCIPAL	S	1	1	1	0
69	ASISTENT MEDICAL	PL	1	1	0	1
70	ASISTENT MEDICAL DEBUTANT	PL	1	1	0	1
71	INFIRMIERA	M	1	1	1	0
72	INFIRMIERA	M	1	1	0	1
73	INFIRMIERA	M	1	1	1	0
74	INFIRMIERA	M	1	1	1	0
75	INFIRMIERA	M	1	1	1	0
76	INFIRMIERA	M	1	1	1	0
77	INFIRMIERA	M	1	1	1	0
78	INFIRMIERA	M	1	1	0	1
79	INFIRMIERA	M	1	1	0	1
80	INFIRMIERA	M	1	1	0	1
81	INGRIJITOARE	G/M	1	1	1	0
82	INGRIJITOARE	G/M	1	1	1	0
83	BRANCARDIER	G/M	1	1	1	0

VII. COMPARTIMENT PEDIATRIE 20 paturi

VII. COMPARTIMENT PEDIATRIE 20 paturi				22	18	4
84	MEDIC SPECIALIST	S	1	1	0	1
85	MEDIC PRIMAR	S	1	1	0	1
86	MEDIC PRIMAR COORDONATOR	S	1	1	1	0
87	ASISTENT MEDICAL PRINCIPAL	PL	1	1	1	0

88	ASISTENT MEDICAL PRINCIPAL	PL	1	1	1	0
89	ASISTENT MEDICAL PRINCIPAL	PL	1	1	1	0
90	ASISTENT MEDICAL	PL	1	1	1	0
91	ASISTENT MEDICAL PRINCIPAL coord	PL	1	1	1	0
92	ASISTENT MEDICAL	PL	1	1	1	0
93	ASISTENT MEDICAL PRINCIPAL	PL	1	1	1	0
94	ASISTENT MEDICAL PRINCIPAL	PL	1	1	1	0
95	ASISTENT MEDICAL	PL	1	1	1	0
96	ASISTENT MEDICAL PRINCIPAL	PL	1	1	1	0
VII.1	POSTURI FIXE-BUCATARIE DIETETICA					
97	ASISTENT MEDICAL PRINCIPAL	PL	1	1	1	0
98	INFIRMIERA	M	1	1	1	0
99	INFIRMIERA	M	1	1	1	0
100	INFIRMIERA	M	1	1	1	0
101	INFIRMIERA	M	1	1	1	0
102	INFIRMIERA	M	1	1	1	0
103	INGRIJITOARE	G/M	1	1	1	0
104	INGRIJITOARE	G/M	1	1	0	1
105	INGRIJITOARE	G/M	1	1	0	1
VIII. SECȚIA CHIRURGIE GENERALA-40 paturi din care 5 paturi COMPARTIMENT ORTOPEDIE SI TRAUMATOLOGII						
				35	27	8
106	MEDIC SEF SECTIE GR. I	S	1	1	0	1
107	MEDIC SPECIALIST	S	1	1	1	0
108	MEDIC PRIMAR rezervat popa	S	1	1	0	1
109	MEDIC PRIMAR	S	1	1	1	0
110	MEDIC SPECIALIST	S	1	1	1	0
111	MEDIC SPECIALIST	S	1	1	0	1
112	ASISTENT MEDICAL PRINCIPAL SEF	PL	1	1	0	1
113	ASISTENT MEDICAL PRINCIPAL	PL	1	1	1	0
114	ASISTENT MEDICAL PRINCIPAL	PL	1	1	1	0
115	ASISTENT MEDICAL PRINCIPAL	PL	1	1	1	0
116	ASISTENT MEDICAL PRINCIPAL	PL	1	1	1	0
117	ASISTENT MEDICAL PRINCIPAL	PL	1	1	1	0
118	ASISTENT MEDICAL PRINCIPAL	PL	1	1	0	1
119	ASISTENT MEDICAL PRINCIPAL	PL	1	1	1	0
120	ASISTENT MEDICAL PRINCIPAL	PL	1	1	1	0
121	ASISTENT MEDICAL PRINCIPAL	PL	1	1	1	0
122	ASISTENT MEDICAL PRINCIPAL	PL	1	1	1	0
123	ASISTENT MEDICAL PRINCIPAL	PL	1	1	1	0
124	ASISTENT MEDICAL	PL	1	1	1	0
125	ASISTENT MEDICAL	PL	1	1	1	0
126	INFIRMIERA	M	1	1	1	0
127	INFIRMIERA	M	1	1	0	1
128	INFIRMIERA	M	1	1	1	0
129	INFIRMIERA	M	1	1	1	0
130	INFIRMIERA	M	1	1	1	0
131	INFIRMIERA	M	1	1	1	0
132	INFIRMIERA	M	1	1	1	0
133	INGRIJITOARE	G/M	1	1	1	0
134	INGRIJITOARE	G/M	1	1	0	1
135	INGRIJITOARE	G/M	1	1	1	0
136	INGRIJITOARE	G/M	1	1	1	0
137	INGRIJITOARE	G/M	1	1	1	0
138	BRANCARDIER	G/M	1	1	1	0
139	BRANCARDIER	G/M	1	1	1	0
140	BRANCARDIER	G/M	1	1	0	1
IX. SECȚIA A.T.I.-15 paturi						
				34	27	7

141	MEDIC SEF SECTIE GR. I	S	1	1	1	0
142	MEDIC SPECIALIST	S	1	1	1	0
143	MEDIC SPECIALIST	S	1	1	0	1
144	MEDIC PRIMAR REZERVAT	S	1	1	0	1
145	MEDIC SPECIALIST	S	1	1	1	0
146	BIOINGINER MEDICAL PRICIPAL	S	1	1	0	1
147	ASISTENT MEDICAL PRINCIPAL SEI	S	1	1	0	1
148	ASISTENT MEDICAL PRINCIPAL	S	1	1	1	0
149	ASISTENT MEDICAL PRINCIPAL	S	1	1	1	0
150	ASISTENT MEDICAL PRINCIPAL	PL	1	1	1	0
151	ASISTENT MEDICAL PRINCIPAL	PL	1	1	1	0
152	ASISTENT MEDICAL PRINCIPAL	PL	1	1	1	0
153	ASISTENT MEDICAL PRINCIPAL	PL	1	1	1	0
154	ASISTENT MEDICAL PRINCIPAL	PL	1	1	1	0
155	ASISTENT MEDICAL PRINCIPAL	PL	1	1	1	0
156	ASISTENT MEDICAL PRINCIPAL	S	1	1	1	0
157	ASISTENT MEDICAL PRINCIPAL	PL	1	1	1	0
158	ASISTENT MEDICAL PRINCIPAL	S	1	1	1	0
159	ASISTENT MEDICAL PRINCIPAL	PL	1	1	1	0
160	ASISTENT MEDICAL	PL	1	1	1	0
161	ASISTENT MEDICAL	PL	1	1	1	0
162	ASISTENT MEDICAL	PL	1	1	0	1
163	INFIRMIERA	M	1	1	1	0
164	INFIRMIERA	M	1	1	1	0
165	INFIRMIERA	M	1	1	1	0
166	INFIRMIERA	M	1	1	1	0
167	INFIRMIERA	M	1	1	1	0
168	INFIRMIERA	M	1	1	1	0
169	INFIRMIERA	M	1	1	1	0
170	INGRIJITOARE	G/M	1	1	1	0
171	INGRIJITOARE	G/M	1	1	1	0
172	INGRIJITOARE	G/M	1	1	0	1
173	BRANCARDIER	G/M	1	1	1	0
174	BRANCARDIER	G/M	1	1	0	1
IX.1 UNITATE DE TRANSFUZII DE SANGE-POST FIX						
				2	1	1
175	ASISTENT MEDICAL PRINCIPAL	PL	1	1	1	0
176	ASISTENT MEDICAL	PL	1	1	0	1
X. SECTIA OBSTETRICA GINECOLOGIE-26 paturi						
				36	26	10
				25	17	8
177	MEDIC SEF SECTIE, GR. I	S	1	1	0	1
178	MEDIC PRIMAR	S	1	1	1	0
179	MEDIC PRIMAR	S	1	1	1	0
180	MEDIC PRIMAR	S	1	1	1	0
181	MEDIC PRIMAR	S	1	1	0	1
182	MEDIC SPECIALIST	S	1	1	1	0
183	ASISTENT MEDICAL PRINCIPAL SEF	PL	1	1	0	1
184	ASISTENT MEDICAL PRINCIPAL	PL	1	1	1	0
185	ASISTENT MEDICAL PRINCIPAL	PL	1	1	1	0
186	ASISTENT MEDICAL PRINCIPAL	PL	1	1	1	0
187	ASISTENT MEDICAL PRINCIPAL	PL	1	1	1	0
188	ASISTENT MEDICAL PRINCIPAL	PL	1	1	1	0
189	ASISTENT MEDICAL PRINCIPAL	PL	1	1	0	1
190	ASISTENT MEDICAL PRINCIPAL	PL	1	1	0	1
191	ASISTENT MEDICAL PRINCIPAL	PL	1	1	0	1
192	ASISTENT MEDICAL PRINCIPAL	PL	1	1	0	1
193	INFIRMIERA	M	1	1	1	0
194	INFIRMIERA	M	1	1	1	0

195	INFIRMIERA	M	1	1	1	0
196	INFIRMIERA	M	1	1	1	0
197	INFIRMIERA	M	1	1	1	0
198	INGRIJITOARE	G/M	1	1	1	0
199	INGRIJITOARE	G/M	1	1	1	0
200	INGRIJITOARE	G/M	1	1	1	0
201	INGRIJITOARE	G/M	1	1	0	1
X.1 SALA DE NASTERI -POSTURI FIXE				5	4	1
202	MEDIC PRIMAR	S	1	1	0	1
203	ASISTENT MEDICAL PRINCIPAL	PL	1	1	1	0
204	ASISTENT MEDICAL PRINCIPAL	PL	1	1	1	0
205	ASISTENT MEDICAL PRINCIPAL	PL	1	1	1	0
206	ASISTENT MEDICAL PRINCIPAL	PL	1	1	1	0
X.2 SALA DE OPERAȚII-POSTURI FIXE				6	5	1
207	ASISTENT MEDICAL PRINCIPAL	PL	1	1	1	0
208	ASISTENT MEDICAL PRINCIPAL	PL	1	1	1	0
209	ASISTENT MEDICAL	PL	1	1	1	0
210	ASISTENT MEDICAL PRINCIPAL	PL	1	1	0	1
211	INFIRMIERA	M	1	1	1	0
212	INGRIJITOARE	G/M	1	1	1	0
XI.COMPARTIMENT NEONATOLOGIE-8 paturi						
				18	13	5
213	MEDIC SPECIALIST	S	1	1	0	1
214	MEDIC SPECIALIST COORDONATOR	S	1	1	1	0
215	ASISTENT MEDICAL PRINCIPAL	PL	1	1	1	0
216	ASISTENT MEDICAL PRINCIPAL	PL	1	1	1	0
217	ASISTENT MEDICAL PRINCIPAL	PL	1	1	1	0
218	ASISTENT MEDICAL PRINCIPAL	PL	1	1	0	1
219	ASISTENT MEDICAL PRINCIPAL COC	PL	1	1	1	0
220	ASISTENT MEDICAL PRINCIPAL	PL	1	1	0	1
221	ASISTENT MEDICAL PRINCIPAL	PL	1	1	1	0
222	ASISTENT MEDICAL PRINCIPAL	PL	1	1	1	0
223	ASISTENT MEDICAL	S	1	1	1	0
224	ASISTENT MEDICAL DEBUTANT	PL	1	1	0	1
225	ASISTENT MEDICAL PRINCIPAL	PL	1	1	0	1
226	ASISTENT MEDICAL	PL	1	1	1	0
227	INFIRMIERA	M	1	1	1	0
228	INFIRMIERA	M	1	1	1	0
229	INFIRMIERA	M	1	1	1	0
230	INFIRMIERA	M	1	1	1	0
XII.COMPARTIMENT GASTROENTEROLOGIE-15 paturi				15	11	4
231	MEDIC PRIMAR Coordonator	S	1	1	1	0
232	MEDIC PRIMAR	S	1	1	0	1
233	ASISTENT MEDICAL PRINCIPAL	PL	1	1	1	0
234	ASISTENT MEDICAL PRINCIPAL COC	PL	1	1	1	0
235	ASISTENT MEDICAL PRINCIPAL	PL	1	1	1	0
236	ASISTENT MEDICAL	PL	1	1	1	0
237	ASISTENT MEDICAL	PL	1	1	1	0
238	ASISTENT MEDICAL	PL	1	1	1	0
239	INFIRMIERA	M	1	1	0	1
240	INFIRMIERA	M	1	1	1	0
241	INFIRMIERA	M	1	1	1	0
242	INFIRMIERA	M	1	1	1	0
243	INFIRMIERA	M	1	1	0	1
244	INGRIJITOARE	M/G	1	1	0	1
245	INGRIJITOARE	M/G	1	1	1	0
XIII.COMPARTIMENT PSIHIATRIE-24 paturi din care 2 paturi cronici						
				18	16	2
246	MEDIC PRIMAR COORDONATOR	S	1	1	1	0

247	MEDIC PRIMAR	S	1	1	1	0
248	ASISTENT MEDICAL PRINCIPAL	PL	1	1	1	0
249	ASISTENT MEDICAL PRINCIPAL	PL	1	1	1	0
250	ASISTENT MEDICAL PRINCIPAL	PL	1	1	1	0
251	ASISTENT MEDICAL PRINCIPAL	S	1	1	1	0
252	ASISTENT MEDICAL PRINCIPAL	PL	1	1	1	0
253	ASISTENT MEDICAL PRINCIPAL COC	PL	1	1	1	0
254	ASISTENT MEDICAL PRINCIPAL	PL	1	1	0	1
255	ASISTENT MEDICAL DEBUTANT	PL	1	1	0	1
256	INFIRMIERA	M	1	1	1	0
257	INFIRMIERA	M	1	1	1	0
258	INFIRMIERA	M	1	1	1	0
259	INFIRMIERA	M	1	1	1	0
260	INFIRMIERA	M	1	1	1	0
261	INGRIJITOARE	G/M	1	1	1	0
262	INGRIJITOARE	G/M	1	1	1	0
263	BRANCARDIER	G/M	1	1	1	0
XIV. COMPARTIMENT PNEUMOLOGIE -20 paturi din care 10 paturi cronici						
				20	14	6
264	MEDIC PRIMAR COORDONATOR	S	1	1	0	1
265	MEDIC SPECIALIST	S	1	1	0	1
266	MEDIC REZIDENT	S	1	1	1	0
267	ASISTENT MEDICAL PRINCIPAL	PL	1	1	1	0
268	ASISTENT MEDICAL PRINCIPAL	PL	1	1	1	0
269	ASISTENT MEDICAL	PL	1	1	1	0
270	ASISTENT MEDICAL	PL	1	1	1	0
271	ASISTENT MEDICAL PRINCIPAL	PL	1	1	1	0
272	ASISTENT MEDICAL COORDONATOR	PL	1	1	1	0
273	ASISTENT MEDICAL	PL	1	1	0	1
274	ASISTENT MEDICAL DEBUTANT	PL	1	1	0	1
275	INFIRMIERA	M	1	1	0	1
276	INFIRMIERA	M	1	1	1	0
277	INFIRMIERA	M	1	1	1	0
278	INFIRMIERA	M	1	1	1	0
279	INFIRMIERA	M	1	1	1	0
280	INFIRMIERA	M	1	1	1	0
281	INGRIJITOARE	G/M	1	1	1	0
282	INGRIJITOARE	G/M	1	1	1	0
283	BRANCARDIER	G/M	1	1	0	1
XV . SECTIA BOLI INFECTIOASE-32 paturi						
				24	19	5
284	MEDIC SEF SECTIE GR.I	S	1	1	0	1
285	MEDIC PRIMAR	S	1	1	1	0
286	MEDIC PRIMAR	S	1	1	1	0
287	MEDIC SPECIALIST	S	1	1	0	1
288	ASISTENT MEDICAL PRINCIPAL	PL	1	1	1	0
289	ASISTENT MEDICAL PRINCIPAL	PL	1	1	1	0
290	ASISTENT MEDICAL	PL	1	1	1	0
291	ASISTENT MEDICAL PRINCIPAL SEF	PL	1	1	0	1
292	ASISTENT MEDICAL PRINCIPAL	PL	1	1	1	0
293	ASISTENT MEDICAL	PL	1	1	1	0
294	ASISTENT MEDICAL PRINCIPAL	PL	1	1	1	0
295	ASISTENT MEDICAL PRINCIPAL	PL	1	1	1	0
296	ASISTENT MEDICAL	PL	1	1	1	0
297	ASISTENT MEDICAL	PL	1	1	1	0
298	ASISTENT MEDICAL	PL	1	1	1	0
299	INFIRMIERA	M	1	1	0	1
300	INFIRMIERA	M	1	1	1	0
301	INFIRMIERA	M	1	1	1	0

302	INFIRMIERA	M	1	1	1	0
303	INFIRMIERA	M	1	1	1	0
304	INFIRMIERA	M	1	1	1	0
305	INGRIJITOARE	G/M	1	1	0	1
306	INGRIJITOARE	G/M	1	1	1	0
307	INGRIJITOARE	G/M	1	1	1	0
XVI.COMPARTIMENT PRIMIRI URGENTE-POSTURI FIXE						
				37	33	4
308	MEDIC SEF CPU GRADUL I	S	1	1	0	1
309	MEDIC SPECIALIST	S	1	1	1	0
310	MEDIC REZIDENT	S	1	1	1	0
311	MEDIC REZIDENT	S	1	1	1	0
312	MEDIC SPECIALIST	S	1	1	0	1
313	ASISTENT SOCIAL	S	1	1	1	0
314	ASISTENT MEDICAL PRINCIPAL SEF	PL	1	1	0	1
315	ASISTENT MEDICAL PRINCIPAL	PL	1	1	1	0
316	ASISTENT MEDICAL PRINCIPAL	PL	1	1	1	0
317	ASISTENT MEDICAL	S	1	1	1	0
318	ASISTENT MEDICAL PRINCIPAL	PL	1	1	1	0
319	ASISTENT MEDICAL PRINCIPAL	PL	1	1	1	0
320	ASISTENT MEDICAL PRINCIPAL	PL	1	1	1	0
321	ASISTENT MEDICAL PRINCIPAL	PL	1	1	1	0
322	ASISTENT MEDICAL PRINCIPAL	PL	1	1	1	0
323	ASISTENT MEDICAL PRINCIPAL	PL	1	1	1	0
324	ASISTENT MEDICAL	PL	1	1	1	0
325	ASISTENT MEDICAL PRINCIPAL	PL	1	1	1	0
326	ASISTENT MEDICAL PRINCIPAL	PL	1	1	1	0
327	ASISTENT MEDICAL	PL	1	1	1	0
328	ASISTENT MEDICAL PRINCIPAL	PL	1	1	1	0
329	REGISTRATOR MEDICAL PRINCIPAL	M	1	1	1	0
330	INFIRMIERA	G/M	1	1	1	0
331	INFIRMIERA	G/M	1	1	1	0
332	INFIRMIERA	G/M	1	1	1	0
333	INFIRMIERA	G/M	1	1	1	0
334	INFIRMIERA	G/M	1	1	1	0
335	INGRIJITOARE	G	1	1	1	0
336	INGRIJITOARE	G	1	1	1	0
337	INGRIJITOARE	G	1	1	1	0
338	INGRIJITOARE	G	1	1	0	1
339	BRANCARDIER	G	1	1	1	0
340	BRANCARDIER	G	1	1	1	0
341	BRANCARDIER	G	1	1	1	0
342	BRANCARDIER	G	1	1	1	0
343	BRANCARDIER	G	1	1	1	0
344	BRANCARDIER	G	1	1	1	0
XVII. STERILIZARE-POSTURI FIXE						
				4	4	0
345	ASISTENT MEDICAL PRINCIPAL COC	PL	1	1	1	0
346	ASISTENT MEDICAL PRINCIPAL	PL	1	1	1	0
347	ASISTENT MEDICAL PRINCIPAL	PL	1	1	1	0
348	ASISTENT MEDICAL	PL	1	1	1	0
XVIII. BLOC OPERATOR -POSTURI FIXE						
				9	9	0
349	MEDIC SPECIALIST	S	1	1	1	0
350	ASISTENT MEDICAL PRINCIPAL SEF	PL	1	1	1	0
351	ASISTENT MEDICAL PRINCIPAL	PL	1	1	1	0
352	ASISTENT MEDICAL PL	PL	1	1	1	0
353	ASISTENT MEDICAL PRINCIPAL	PL	1	1	1	0
354	ASISTENT MEDICAL PRINCIPAL	PL	1	1	1	0

355	ASISTENT MEDICAL PRINCIPAL	PL	1	1	1	0
356	INGRIJITOARE	G	1	1	1	0
357	INGRIJITOARE	G	1	1	1	0
XIX.FARMACIA CU CIRCUIT INCHIS						
				9	6	3
358	FARMACIST SEF GR. I	S	1	1	1	0
359	FARMACIST	S	1	1	0	1
360	ASISTENT MEDICAL PRINCIPAL COC	PL	1	1	1	0
361	ASISTENT MEDICAL PRINCIPAL	PL	1	1	1	0
362	ASISTENT MEDICAL PRINCIPAL	PL	1	1	1	0
363	ASISTENT MEDICAL PRINCIPAL	PL	1	1	1	0
364	ASISTENT MEDICAL PRINCIPAL	PL	1	1	0	1
365	INGRIJITOARE	G	1	1	1	0
366	INGRIJITOARE	G	1	1	0	1
XX.LABORATOR ANALIZE MEDICALE CU PUNCT DE LUCRU DE RECOLTARE PROBE BIOLOGICE						
IN AMBULATORIUL INTEGRAT-POSTURI FIXE						
				23	16	7
367	MEDIC SEF LABORATOR GR.II	S	1	1	0	1
368	MEDIC SPECIALIST	S	1	1	1	0
369	MEDIC SPECIALIST	S	1	1	0	1
370	BIOLOG	S	1	1	0	1
371	BIOLOG PRINCIPAL	S	1	1	1	0
372	CHIMIST PRINCIPAL	S	1	1	1	0
373	BIOLOG SPECIALIST	S	1	1	1	0
374	BIOLOG SPECIALIST	S	1	1	1	0
375	ASISTENT MEDICAL PRINCIPAL .SEF	PL	1	1	0	1
376	ASISTENT MEDICAL PRINCIPAL	PL	1	1	1	0
377	ASISTENT MEDICAL PRINCIPAL	PL	1	1	1	0
378	ASISTENT MEDICAL PRINCIPAL	PL	1	1	1	0
379	ASISTENT MEDICAL PRINCIPAL	PL	1	1	1	0
380	ASISTENT MEDICAL PRINCIPAL	PL	1	1	1	0
381	ASISTENT MEDICAL PRINCIPAL	PL	1	1	1	0
382	ASISTENT MEDICAL PRINCIPAL	PL	1	1	1	0
383	ASISTENT MEDICAL PRINCIPAL	PL	1	1	1	0
384	ASISTENT MEDICAL	PL	1	1	0	1
385	ASISTENT MEDICAL	PL	1	1	1	0
386	ASISTENT MEDICAL	S	1	1	1	0
387	ASISTENT MEDICAL DEBUTANT	PL	1	1	0	1
388	INGRIJITOR	G	1	1	1	0
389	INGRIJITOR	G	1	1	0	1
XXI. LABORATOR RADIOLOGIE SI IMAGISTICA MEDICALA -POSTURI FIXE						
CT						
				20	12	8
390	MEDIC SEF LABORATOR GR.II	S	1	1	0	1
391	MEDIC PRIMAR	S	1	1	1	0
392	MEDIC SPECIALIST	S	1	1	1	0
393	MEDIC REZIDENT	S	1	1	1	0
394	ASISTENT MEDICAL PRINCIPAL SEF	PL	1	1	0	1
395	ASISTENT MEDICAL PRINCIPAL	PL	1	1	1	0
396	ASISTENT MEDICAL PRINCIPAL	PL	1	1	1	0
397	ASISTENT MEDICAL PRINCIPAL	PL	1	1	1	0
398	ASISTENT MEDICAL PRINCIPAL	PL	1	1	1	0
399	ASISTENT MEDICAL PRINCIPAL	PL	1	1	1	0
400	ASISTENT MEDICAL	PL	1	1	1	0
401	ASISTENT MEDICAL	PL	1	1	0	1
402	ASISTENT MEDICAL	PL	1	1	1	0
CT						
403	MEDIC SPECIALIST	S	1	1	0	1
404	ASISTENT MEDICAL	PL	1	1	1	0

405	ASISTENT MEDICAL PRINCIPAL	PL	1	1	0	1
406	ASISTENT MEDICAL DEBUTANT	PL	1	1	0	1
407	ASISTENT MEDICAL DEBUTANT	PL	1	1	0	1
408	INGRIJITOR	G	1	1	1	0
409	INGRIJITOR	G	1	1	0	1
XXII.COMPARTIMENT ENDOSCOPIE DIGESTIVA						
				2	0	2
410	MEDIC SPECIALIST	S	1	1	0	1
411	ASISTENT MEDICAL	PL	1	1	0	1
XXIII. SERVICIU ANATOMIE PATOLOGICA						
COMPARTIMENT CITOLOGIE						
COMPARTIMENT HISTOPATOLOGIE						
PROSECTURA						
				6	4	2
412	MEDIC PRIMAR	S	1	1	1	0
413	MEDIC REZIDENT	S	1	1	0	1
414	BIOCHIMIST SPECIALIST	S	1	1	1	0
415	ASISTENT MEDICAL	PL	1	1	1	0
416	AUTOPSIER	L	1	1	0	1
417	INGRIJITOARE	G	1	1	1	0
XXIV. LABORATOR EXPLORARI FUNCTIONALE-POST FIX						
				2	2	0
418	BIOINGINER MEDICAL PRINCIPAL	S	1	1	1	0
419	ASISTENT MEDICAL	PL	1	1	1	0
XXV. COMPARTIMENT DE PREVENIRE AL INFECTIILOR						
ASOCIATE ASISTENTEI MEDICALE						
				4	2	2
420	MEDIC SPECIALIST EPIDEMIOLOGIE	S	1	1	0	1
421	MEDIC PRIMAR SPECIALITATE BOLI	S	1	1	0	1
422	ASISTENT MEDICAL PRINCIPAL	PL	1	1	1	0
423	AGENT/INFIRMIER DDD	G	1	1	1	0
XXVI. SERVICIUL DE EVALUARE SI STATISTICA MEDICALA -POSTURI FIXE						
				13	10	3
424	SEF.SERVICIU GR I	S	1	1	0	1
425	INFORMATICIAN GR II	SSD	1	1	0	1
426	REGISTRATOR MEDICAL	M	1	1	1	0
427	REGISTRATOR MEDICAL PRINCIPAL	M	1	1	1	0
428	REGISTRATOR MEDICAL PRINCIPAL	M	1	1	1	0
429	REGISTRATOR MEDICAL PRINCIPAL	M	1	1	1	0
430	REGISTRATOR MEDICAL PRINCIPAL	M	1	1	1	0
431	BIOINGINER MEDICAL	S	1	1	1	0
432	REGISTRATOR MEDICAL	M	1	1	1	0
433	REGISTRATOR MEDICAL ARHIVA	M	1	1	1	0
434	REGISTRATOR MEDICAL	M	1	1	0	1
435	REGISTRATOR MEDICAL	M	1	1	1	0
436	REGISTRATOR MEDICAL PRINCIPAL	M	1	1	1	0
XXVII.CABINET DIABET ZAHARAT,NUTRITIE SI BOLI METABOLICE-POSTURI FIXE						
				3	2	1
437	MEDIC PRIMAR	S	1	1	1	0
438	MEDIC PRIMAR	S	1	1	0	1
439	ASISTENT MEDICAL PRINCIPAL	PL	1	1	1	0
XXVIII. CABINET PLANIFICARE FAMILIALA-POSTURI FIXE						
				1	1	0
440	MEDIC PRIMAR	S	1	1	1	0
XXIX.DISPENSAR T.B.C.						
				5	4	1
441	MEDIC PRIMAR	S	1	1	1	0

442	ASISTENT MEDICAL PRINCIPAL COC	S	1	1	1	0
443	ASISTENT MEDICAL PRINCIPAL	PL	1	1	1	0
444	ASISTENT MEDICAL PRINCIPAL	PL	1	1	0	1
445	INGRIJITOR	G	1	1	1	0
XXX .BUGATARIE DIETETICA-POSTURI FIXE						
				2	1	1
446	ASISTENT MEDICAL COORDONATOR	PL	1	1	0	1
447	ASISTENT MEDICAL	PL	1	1	1	0
XXXI. SPALATORIE						
				6	5	1
448	SPALATOREASA CU GESTIUNE	M	1	1	1	0
449	SPALATOREASA	M	1	1	1	0
450	SPALATOREASA	M	1	1	0	1
451	SPALATOREASA	M	1	1	1	0
452	SPALATOREASA	M	1	1	1	0
453	SPALATOREASA	M	1	1	1	0
AMBULATORIUL INTEGRAT CU CABINETE IN SPECIALITATE						
				38	20	18
XXXII.1 CABINET MEDICINA INTERNA						
454	ASISTENT MEDICAL PRINCIPAL	PL	1	1	1	0
XXXI.2 CABINET O.R.L.						
455	MEDIC SPECIALIST	S	1	1	1	0
456	MEDIC REZIDENT	S	1	1	1	0
457	ASISTENT MEDICAL	PL	1	1	1	0
XXXI.3 CABINET OFTALMOLOGIE						
458	MEDIC PRIMAR	S	1	1	1	0
459	MEDIC REZIDENT	S	1	1	1	0
460	ASISTENT MEDICAL PRINCIPAL	PL	1	1	1	0
XXXI.4 CABINET CHIRURGIE GENERALA						
461	ASISTENT MEDICAL PRINCIPAL COC	PL	1	1	1	0
XXXI.5 CABINET OBSTETRICA GINECOLOGIE						
462	ASISTENT MEDICAL PRINCIPAL	PL	1	1	1	0
463	ASISTENT MEDICAL	PL	1	1	0	1
XXXI.6 CABINET PEDIATRIE						
464	ASISTENT MEDICAL PRINCIPAL	PL	1	1	1	0
XXXI.7 CABINET NEUROLOGIE						
465	ASISTENT MEDICAL	PL	1	1	0	1
XXXI.8 CABINET DERMATOVENEROLOGIE						
466	MEDIC SPECIALIST	S	1	1	1	0
467	ASISTENT MEDICAL	PL	1	1	0	1
XXXI.9 CABINET ENDOCRINOLOGIE						
468	MEDIC SPECIALIST	S	1	1	1	0
469	ASISTENT MEDICAL	PL	1	1	0	1
XXXI.10 CABINET RECUPERARE , MEDICINA FIZICA SI BALNEOLOGIE						
470	MEDIC REZIDENT	S	1	1	1	0
471	MEDIC SPECIALIST	S	1	1	0	1
472	KINETOTERAPEUT PRINCIPAL	S	1	1	1	0
473	FIZIOKINETOTERAPEUT	S	1	1	0	1
XXXI.11 CABINET CARDIOLOGIE						
474	MEDIC SPECIALIST	S	1	1	1	0
475	MEDIC SPECIALIST	S	1	1	1	0
476	ASISTENT MEDICAL	PL	1	1	0	1
XXXI.12 CABINET ORTOPEDIE SI TRAUMATOLOGIE						
477	ASISTENT MEDICAL	PL	1	1	1	0
XXXI.13 CABINET NEFROLOGIE						
478	ASISTENT MEDICAL	PL	1	1	0	1
XXXI.14 CABINET PSIHIATRIE						
479	ASISTENT MEDICAL PRINCIPAL	PL	1	1	0	1
XXXI.15 CABINET MEDICINA DENTARA (CARE ASIGURA SI URGENTELE)						

480	MEDIC DENTIST	S	1	1	0	1
481	ASISTENT MEDICAL	PL	1	1	0	1
XXXI.16 CABINET PNEUMOLOGIE						
482	ASISTENT MEDICAL	PL	1	1	0	1
XXXI.17 CABINET BOLI INFECTIOASE						
483	ASISTENT MEDICAL	PL	1	1	0	1
XXXI.18 CABINET GASTROENTEROLOGIE						
484	ASISTENT MEDICAL	PL	1	1	0	1
XXXI.19 CABINET PSIHOLOGIE						
485	PSIHOLOG PRINCIPAL	S	1	1	1	0
XXXI.20 CABINET UROLOGIE						
486	MEDIC SPECIALIST	S	1	1	1	0
487	ASISTENT MEDICAL	PL	1	1	0	1
XXXI.21 LABORATOR DE RECUPERARE, MEDICINA FIZICA SI BALNEOLOGIE(BAZA DE TRATAMENT)						
488	MASEUR	M	1	1	0	1
XXXI.21 PERSONAL DE CURATENIE						
489	INGRIJITOR	G	1	1	0	1
490	INGRIJITOR	G	1	1	1	0
491	INGRIJITOR	G	1	1	0	1
	APARAT FUNCȚIONAL					
XXXII. MUNCITORI ȘI ÎNGRIJITOR BLOC ALIMENTAR				41	34	7
	MUNCITORI		40	33	7	
XXXII.1MUNCITORI INTRETINERE CLADIRI, INSTALATII DE APA LUMINA SI INCALZIRE						
	TAMPLAR			9	7	2
492	MUNCITOR CALIFICAT TR. II	G	1	1	1	0
	ELECTRICIAN DE INTRETINERE SI REPARATII					
493	MUNCITOR CALIFICAT TR.II	G	1	1	1	0
494	MUNCITOR CALIFICAT TR.III	G	1	1	1	0
	ZIDAR					
495	MUNCITOR CALIFICAT TR. I	G	1	1	1	0
	ZUGRAV-VOPSITOR					
496	MUNCITOR CALIFICAT TR. IV	G	1	1	0	1
	LACATUS MECANIC					
497	MUNCITOR CALIFICAT TR. I	G	1	1	1	0
	INSTALATII DE APA SI CANAL					
498	MUNCITOR CALIFICAT TR.III	G	1	1	0	1
499	MUNCITOR CALIFICAT TR.II		1	1	1	0
500	MUNCITOR CALIFICAT TR.IV	G	1	1	1	0
XXXII.2MUNCITORI BLOC ALIMENTAR				9	9	0
	INCLUSIV INGRIJITOARE					
	BUCATAR			3	3	0
501	MUNCITOR CALIFICAT TR. III	M	1	1	1	0
502	MUNCITOR CALIFICAT TR. II	M	1	1	1	0
503	MUNCITOR CALIFICAT TR.IV	G	1	1	1	0
	MUNCITORI NECALIFICATI			5	5	0
504	MUNCITOR NECALIFICAT TR.I	G	1	1	1	0
505	MUNCITOR NECALIFICAT TR.I	G	1	1	1	0
506	MUNCITOR NECALIFICAT TR.I	G	1	1	1	0
507	MUNCITOR NECALIFICAT TR.I	G	1	1	1	0
508	MUNCITOR NECALIFICAT TR.I	G	1	1	1	0
	INGRIJITOARE BLOC ALIMENTAR			1	1	0
509	INGRIJITOARE	G	1	1	1	0
XXXII.3MUNCITORI CARE DESERVESC CENTRALA TERMICA-POSTURI FIXE						
				5	5	0
510	MUNCITOR CALIFICAT TR. I	G	1	1	1	0
511	MUNCITOR CALIFICAT TR. I	G	1	1	1	0
512	MUNCITOR CALIFICAT TR. I SEF ECH	G	1	1	1	0

513	MUNCITOR CALIFICAT TR. I	G	1	1	1	0
514	MUNCITOR CALIFICAT TR. I	G	1	1	1	0
XXXII.4 MUNCITORI CARE DESERVESC STATIA CENTRALA DE OXIGEN-POSTURI FIXE						
				5	2	3
515	MUNCITOR CALIFICAT TR. III	G	1	1	1	0
516	MUNCITOR CALIFICAT TR. III	G	1	1	0	1
517	MUNCITOR CALIFICAT TR. II	G	1	1	1	0
518	MUNCITOR CALIFICAT TR. I	G	1	1	0	1
519	MUNCITOR CALIFICAT TR. I	G	1	1	0	1
XXXII.5 MUNCITORI CARE DESERVESC LIFTUL CU INSOTITOR-POSTURI FIXE						
				5	6	0
520	MUNCITOR CALIFICAT TR. III	G	1	1	1	0
521	MUNCITOR CALIFICAT TR. II	G	1	1	1	0
522	MUNCITOR CALIFICAT TR. II	G	1	1	1	0
523	MUNCITOR CALIFICAT TR. II	G	1	1	1	0
524	MUNCITOR CALIFICAT TR. II	G	1	1	1	0
XXXII.6 MUNCITORI CARE DESERVESC CENTRALA TELEFONICA-POSTURI FIXE						
				1	1	0
525	MUNCITOR CALIFICAT TR. III	M	1	1	1	0
XXXII.7 ACTIVITATEA DE CONDUCERE AUTO						
				2	2	0
526	SOFER TR. II	G	1	1	1	0
527	SOFER TR. II	G	1	1	1	0
XXXII.8 INTRETINERE INVENTAR MOALE						
				1	1	0
528	MUNCITOR CALIFICAT TR. III	G	1	1	1	0
XXXII.10 INTRETINERE SPATII VERZI						
				1	0	1
529	MUNCITOR NECALIFICAT TR. I	G	1	1	0	1
XXXII.11 APROVIZIONARE, MANIPULARE, DEPOZITARE SI DESERVIRE MIJLOACE DE TRANSPORT						
				1	1	0
530	MUNCITOR NECALIFICAT TR. I	G	1	1	1	0
XXXII.12 DESERVIRE GRUP ELECTROGEN						
	ELECTRICIAN			1	0	1
531	MUNCITOR CALIFICAT TR. IV	G	1	1	0	1
XXXII.13 MUNCITORI CARE DESERVESC STATIA DE POMPE						
				1	1	0
532	MUNCITOR CALIFICAT TR. IV	G	1	1	1	0
XXXIII. PERSONAL CLERICAL						
				1	0	1
533	PREOT GR. II	S	1	1	0	1
XXXIV. PERSONAL T.E.S.A.						
				16	13	3
XXXIV.1 BIROU RUNOS						
				3	2	1
534	SEF BIROU GR. II	S	1	1	1	0
535	ECONOMIST GR. I A	S	1	1	1	0
536	REFERENT IA	M	1	1	0	1
XXXIV.2 BIROU FINANCIAR CONTABILITATE						
				4	3	1
537	SEF BIROU GR. II rezervat	S	1	1	0	1
538	ECONOMIST GR. I A	S	1	1	1	0
539	ECONOMIST GR. I A	S	1	1	1	0
540	ECONOMIST GR. I A	S	1	1	1	0
XXXIV. 3 BIROU ACHIZITII PUBLICE, CONTRACTARE, APROVIZIONARE						
				3	3	0
541	SEF BIROU GR. II	S	1	1	1	0
542	ECONOMIST GR. IA	S	1	1	1	0

543	ECONOMIST GR. IA	S	1	1	1	0
XXXIV.4 BIROU ADMINISTRATIV TRANSPORT TEHNIC						
				4	3	1
544	SEF BIROU GRADUL II	S	1	1	1	0
545	ECONOMIST GR.I	S	1	1	1	0
546	MAGAZINER TR. I.	M	1	1	1	0
547	INGINER GR.II- TEHNIC	S	1	1	0	1
XXXIV.5 COMPARTIMENT SANATATE SI SEC. A MUNCII,PSI,PROTECTIE CIVILA SI SITUATII DE URGENTA						
				1	1	0
548	INGINER IA	S	1	1	1	0
XXXIV.6 COMPARTIMENT JURIDIC						
				1	1	0
549	CONSILIER JURIDIC GR.II	S	1	1	1	0
XXXV INGRIJITOR SECTOR ADMINISTRATIV-POSTURI FIXE GENERALE						
		M	1	1	0	1
550	INGRIJITOR SECTOR ADMINISTRATIV	G	1	1	0	1
	TOTAL					

Compartiment CGRUPP-I
Ing. Blanariu Carmen

Președinte de ședință,
Ioan Iacob

ka

J



Secretar general,
jr.Monica Dumitrașcu