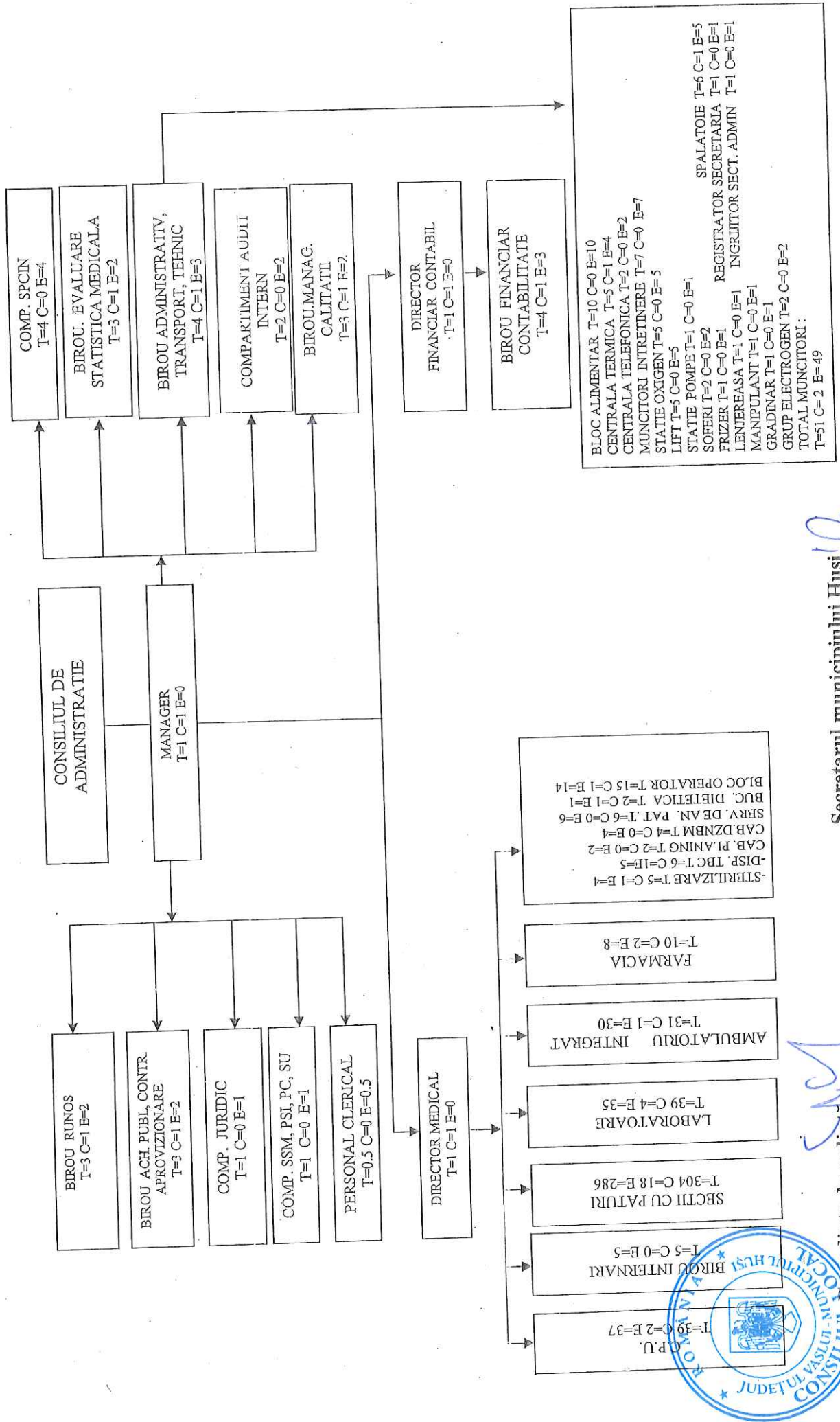


SPITAL MUNICIPAL „DIMITRIE CASTROIAN” HUSI

ORGANIGRAMA SPITALULUI MUNICIPAL „DIMITRIE CASTROIAN” HUSI-09.2016
 TOTAL POSTURI=551.5; DIN CARE POSTURI CONDUCERE=42; TOTAL POSTURI EXECUTIE=509.5



Secretarul municipiului Husi
 jr. Monica Dumitraşcu

Preşedinte de şedinţă,
 Gheorghe Hoha



STAT DE FUNCTII

pentru Spitalul Municipal "Dimitrie Castoroian" Husi

| Nr. crt. | COMPARTIMENT/FUNCTIE | Nivel de studii | Cuatum post | Posturi normate | Posturi ocupate | Posturi vacante |
|---|-------------------------------------|-----------------|-------------|-----------------|-----------------|-----------------|
| I.COMITET DIRECTOR | | | | 3 | 3 | 0 |
| 1 | MANAGER, GR. II | S | 1 | 1 | 1 | 0 |
| 2 | DIRECTOR MEDICAL GR. II | S | 1 | 1 | 1 | 0 |
| 3 | DIRECTOR FINANCIAR CONTAB.L, GR. II | S | 1 | 1 | 1 | 0 |
| II. BIROU MANAGEMENT AL CALITATII-POSTURI FIXE | | | | 3 | 1 | 2 |
| 4 | MEDIC PRIMAR SEF BIROU GR. II | S | 1 | 1 | 0 | 1 |
| 5 | PSIHOLOG STAGIAR | S | 1 | 1 | 1 | 0 |
| 6 | INGINER GR. I | S | 1 | 1 | 0 | 0 |
| III. COMPARTIMENT AUDIT PUBLIC INTERN | | | | 2 | 0 | 2 |
| 7 | MEDIC PRIMAR | S | 1 | 1 | 0 | 1 |
| 8 | AUDITOR I | S | 1 | 1 | 0 | 1 |
| IV.SECTIA MEDICINA INTERNA-50 paturi din care COMPARTIMENT GASTROENTEROLOGIE 10 paturi total 50 paturi | | | | 40 | 33 | 7 |
| 9 | MEDIC SEF SECTIE , GR.I | S | 1 | 1 | 0 | 1 |
| 10 | MEDIC PRIMAR | S | 1 | 1 | 1 | 0 |
| 11 | MEDIC SPECIALIST | S | 1 | 1 | 1 | 0 |
| 12 | MEDIC REZIDENTI | S | 1 | 1 | 1 | 0 |
| 13 | MEDIC SPECIALIST | S | 1 | 1 | 0 | 1 |
| 14 | ASISTENT MEDICAL PRINCIPAL SEF | PL | 1 | 1 | 0 | 1 |
| 15 | ASISTENT MEDICAL PRINCIPAL | PL | 1 | 1 | 1 | 0 |
| 16 | ASISTENT MEDICAL PRINCIPAL | PL | 1 | 1 | 1 | 0 |
| 17 | ASISTENT MEDICAL PRINCIPAL | PL | 1 | 1 | 1 | 0 |
| 18 | ASISTENT MEDICAL PRINCIPAL | PL | 1 | 1 | 1 | 0 |
| 19 | ASISTENT MEDICAL PRINCIPAL | PL | 1 | 1 | 1 | 0 |
| 20 | ASISTENT MEDICAL PRINCIPAL | PL | 1 | 1 | 1 | 0 |
| 21 | ASISTENT MEDICAL PRINCIPAL | PL | 1 | 1 | 1 | 0 |
| 22 | ASISTENT MEDICAL PRINCIPAL | S | 1 | 1 | 1 | 0 |
| 23 | ASISTENT MEDICAL PRINCIPAL | PL | 1 | 1 | 0 | 1 |
| 24 | ASISTENT MEDICAL PRINCIPAL | PL | 1 | 1 | 1 | 0 |
| 25 | ASISTENT MEDICAL | PL | 1 | 1 | 1 | 0 |
| 26 | ASISTENT MEDICAL | PL | 1 | 1 | 1 | 0 |
| 27 | ASISTENT MEDICAL PRINCIPAL | PL | 1 | 1 | 1 | 0 |
| 28 | ASISTENT MEDICAL | PL | 1 | 1 | 1 | 0 |
| 29 | ASISTENT MEDICAL | PL | 1 | 1 | 1 | 0 |
| 30 | ASISTENT MEDICAL | PL | 1 | 1 | 1 | 0 |
| 31 | ASISTENT MEDICAL | PL | 1 | 1 | 1 | 0 |
| 32 | ASISTENT MEDICAL DEBUTANT | PL | 1 | 1 | 1 | 0 |
| 33 | REGISTRATOR MEDICAL | M | 1 | 1 | 1 | 0 |
| 34 | INFIRMIERA | M | 1 | 1 | 1 | 0 |

| | | | | | | |
|----|--------------|-----|---|---|---|---|
| 35 | INFIRMIERA | M | 1 | 1 | 1 | 0 |
| 36 | INFIRMIERA | M | 1 | 1 | 1 | 0 |
| 37 | INFIRMIERA | M | 1 | 1 | 1 | 0 |
| 38 | INFIRMIERA | M | 1 | 1 | 1 | 0 |
| 39 | INFIRMIERA | M | 1 | 1 | 1 | 0 |
| 40 | INFIRMIERA | M | 1 | 1 | 1 | 0 |
| 41 | INFIRMIERA | M | 1 | 1 | 1 | 0 |
| 42 | INFIRMIERA | M | 1 | 1 | 1 | 0 |
| 43 | INGRIJITOARE | G/M | 1 | 1 | 1 | 0 |
| 44 | INGRIJITOARE | G/M | 1 | 1 | 1 | 0 |
| 45 | INGRIJITOARE | G/M | 1 | 1 | 0 | 1 |
| 46 | INGRIJITOARE | G/M | 1 | 1 | 0 | 1 |
| 47 | INGRIJITOARE | G/M | 1 | 1 | 0 | 1 |
| 48 | INGRIJITOARE | G/M | 1 | 1 | 0 | 1 |

V. SECTIA MEDICINA INTERNA CRONICI-30 paturi

| | | | | | | |
|----|--------------------------------|-----|----|----|---|---|
| | | | 21 | 16 | 5 | |
| 49 | MEDIC SEF SECTIE ,GR.I | S | 1 | 1 | 0 | 1 |
| 50 | MEDIC PRIMAR | S | 1 | 1 | 1 | 0 |
| 51 | MEDIC SPECIALIST | S | 1 | 1 | 0 | 1 |
| 52 | ASISTENT MEDICAL PRINCIPAL SEF | PL | 1 | 1 | 1 | 0 |
| 53 | ASISTENT MEDICAL PRINCIPAL | S | 1 | 1 | 1 | 0 |
| 54 | ASISTENT MEDICAL PRINCIPAL | PL | 1 | 1 | 1 | 0 |
| 55 | ASISTENT MEDICAL PRINCIPAL | PL | 1 | 1 | 1 | 0 |
| 56 | ASISTENT MEDICAL PRINCIPAL | PL | 1 | 1 | 1 | 0 |
| 57 | ASISTENT MEDICAL PRINCIPAL | PL | 1 | 1 | 1 | 0 |
| 58 | ASISTENT MEDICAL | PL | 1 | 1 | 1 | 0 |
| 59 | INFIRMIERA | M | 1 | 1 | 1 | 0 |
| 60 | INFIRMIERA | M | 1 | 1 | 1 | 0 |
| 61 | INFIRMIERA | M | 1 | 1 | 1 | 0 |
| 62 | INFIRMIERA | M | 1 | 1 | 1 | 0 |
| 63 | INFIRMIERA | M | 1 | 1 | 1 | 0 |
| 64 | INFIRMIERA | M | 1 | 1 | 1 | 0 |
| 65 | INFIRMIERA | M | 1 | 1 | 1 | 0 |
| 66 | INFIRMIERA | M | 1 | 1 | 0 | 1 |
| 67 | INFIRMIERA | M | 1 | 1 | 0 | 1 |
| 68 | INGRIJITOARE | M | 1 | 1 | 0 | 1 |
| 69 | INGRIJITOARE | G/M | 1 | 1 | 0 | 1 |

VI. COMPARTIMENT PEDIATRIE-20 paturi

| | | | | | | |
|------|--|----|----|----|---|---|
| | | | 26 | 19 | 7 | |
| 70 | MEDIC SPECIALIST | S | 1 | 1 | 0 | 1 |
| 71 | MEDIC PRIMAR | S | 1 | 1 | 0 | 1 |
| 72 | MEDIC PRIMAR | S | 1 | 1 | 1 | 0 |
| 73 | MEDIC SPECIALIST | S | 1 | 1 | 1 | 0 |
| 74 | PSIHOLOG SPECIALIST | S | 1 | 1 | 1 | 0 |
| 75 | ASISTENT MEDICAL PRINCIPAL | PL | 1 | 1 | 1 | 0 |
| 76 | ASISTENT MEDICAL PRINCIPAL | PL | 1 | 1 | 1 | 0 |
| 77 | ASISTENT MEDICAL PRINCIPAL | PL | 1 | 1 | 0 | 1 |
| 78 | ASISTENT MEDICAL | PL | 1 | 1 | 1 | 0 |
| 79 | ASISTENT MEDICAL PRINCIPAL COORDONATOR | PL | 1 | 1 | 1 | 0 |
| 80 | ASISTENT MEDICAL PRINCIPAL | PL | 1 | 1 | 1 | 0 |
| 81 | ASISTENT MEDICAL PRINCIPAL | PL | 1 | 1 | 1 | 0 |
| 82 | ASISTENT MEDICAL | PL | 1 | 1 | 1 | 0 |
| VI.1 | POSTURI FIXE-BUCATARIE DIETETICA | | | | | |
| 83 | ASISTENT MEDICAL | PL | 1 | 1 | 1 | 0 |
| VI.2 | POSTURI FIXE-ATI | | | | | |
| 84 | ASISTENT MEDICAL | PL | 1 | 1 | 1 | 0 |
| VI.3 | POSTURI FIXE-TRIAJ BOLNAVI | | | | | |
| 85 | ASISTENT MEDICAL | PL | 1 | 1 | 1 | 0 |
| 86 | ASISTENT MEDICAL DEBUTANT | PL | 1 | 1 | 0 | 1 |
| 87 | ASISTENT MEDICAL DEBUTANT | PL | 1 | 1 | 0 | 1 |
| 88 | INFIRMIERA | M | 1 | 1 | 1 | 0 |
| 89 | INFIRMIERA | M | 1 | 1 | 1 | 0 |
| 90 | INFIRMIERA | M | 1 | 1 | 1 | 0 |

| | | | | | | |
|----|--------------|-----|---|---|---|---|
| 91 | INFIRMIERA | M | 1 | 1 | 1 | 0 |
| 92 | INFIRMIERA | M | 1 | 1 | 1 | 0 |
| 93 | INGRIJITOARE | G/M | 1 | 1 | 1 | 0 |
| 94 | INGRIJITOARE | G/M | 1 | 1 | 0 | 1 |
| 95 | INGRIJITOARE | G/M | 1 | 1 | 0 | 1 |

VII. SECTIA OBSTETRICA GINECOLOGIE-32 paturi

| | | | | | | |
|-----|--------------------------------|-----|----|----|----|---|
| | | | 42 | 28 | 14 | |
| 96 | MEDIC SEF SECTIE, GR. I | S | 1 | 1 | 0 | 1 |
| 97 | MEDIC PRIMAR | S | 1 | 1 | 1 | 0 |
| 98 | MEDIC PRIMAR | S | 1 | 1 | 1 | 0 |
| 99 | MEDIC PRIMAR | S | 1 | 1 | 0 | 1 |
| 100 | MEDIC PRIMAR | S | 1 | 1 | 1 | 0 |
| 101 | MEDIC REZIDENT | S | 1 | 1 | 0 | 1 |
| 102 | ASISTENT MEDICAL PRINCIPAL SEF | PL | 1 | 1 | 0 | 1 |
| 103 | ASISTENT MEDICAL PRINCIPAL | PL | 1 | 1 | 1 | 0 |
| 104 | ASISTENT MEDICAL PRINCIPAL | PL | 1 | 1 | 1 | 0 |
| 105 | ASISTENT MEDICAL PRINCIPAL | PL | 1 | 1 | 0 | 1 |
| 106 | ASISTENT MEDICAL PRINCIPAL | PL | 1 | 1 | 0 | 1 |
| 107 | ASISTENT MEDICAL PRINCIPAL | PL | 1 | 1 | 0 | 1 |
| 108 | ASISTENT MEDICAL PRINCIPAL | PL | 1 | 1 | 0 | 1 |
| 109 | ASISTENT MEDICAL PRINCIPAL | PL | 1 | 1 | 1 | 0 |
| 110 | ASISTENT MEDICAL | PL | 1 | 1 | 1 | 0 |
| 111 | ASISTENT MEDICAL | PL | 1 | 1 | 0 | 1 |
| 112 | ASISTENT MEDICAL DEBUTANT | PL | 1 | 1 | 1 | 0 |
| 113 | INFIRMIERA | M | 1 | 1 | 1 | 0 |
| 114 | INFIRMIERA | M | 1 | 1 | 1 | 0 |
| 115 | INFIRMIERA | M | 1 | 1 | 1 | 0 |
| 116 | INFIRMIERA | M | 1 | 1 | 1 | 0 |
| 117 | INFIRMIERA | M | 1 | 1 | 1 | 0 |
| 118 | INFIRMIERA | M | 1 | 1 | 1 | 0 |
| 119 | INGRIJITOARE | G/M | 1 | 1 | 1 | 0 |
| 120 | INGRIJITOARE | G/M | 1 | 1 | 1 | 0 |
| 121 | INGRIJITOARE | G/M | 1 | 1 | 1 | 0 |
| 122 | INGRIJITOARE | G/M | 1 | 1 | 0 | 1 |

VII.1 SALA DE NASTERI-POSTURI FIXE

| | | | | | | |
|-----|----------------------------|----|---|---|---|---|
| 123 | MEDIC PRIMAR rezervat | S | 1 | 1 | 0 | 1 |
| 124 | ASISTENT MEDICAL PRINCIPAL | PL | 1 | 1 | 1 | 0 |
| 125 | ASISTENT MEDICAL PRINCIPAL | PL | 1 | 1 | 1 | 0 |
| 126 | ASISTENT MEDICAL PRINCIPAL | PL | 1 | 1 | 1 | 0 |
| 127 | ASISTENT MEDICAL PRINCIPAL | PL | 1 | 1 | 1 | 0 |

VII.2 SALA DE OPERATII-POSTURI FIXE

| | | | | | | |
|-----|----------------------------|-----|---|---|---|---|
| 128 | ASISTENT MEDICAL PRINCIPAL | PL | 1 | 1 | 1 | 0 |
| 129 | ASISTENT MEDICAL PRINCIPAL | PL | 1 | 1 | 1 | 0 |
| 130 | ASISTENT MEDICAL PRINCIPAL | PL | 1 | 1 | 1 | 0 |
| 131 | ASISTENT MEDICAL PRINCIPAL | PL | 1 | 1 | 1 | 0 |
| 132 | INFIRMIERA | M | 1 | 1 | 0 | 1 |
| 133 | INFIRMIERA | M | 1 | 1 | 0 | 1 |
| 134 | INFIRMIERA | M | 1 | 1 | 0 | 1 |
| 135 | INGRIJITOARE | G/M | 1 | 1 | 1 | 0 |
| 136 | INGRIJITOARE | G/M | 1 | 1 | 0 | 1 |
| 137 | INGRIJITOARE | G/M | 1 | 1 | 0 | 1 |

VIII.COMPARTIMENT NEONATOLOGIE-10 paturi

| | | | | | | |
|-----|--|----|----|----|---|---|
| | | | 20 | 13 | 7 | |
| 138 | MEDIC SPECIALIST | S | 1 | 1 | 0 | 1 |
| 139 | MEDIC SPECIALIST | S | 1 | 1 | 1 | 0 |
| 140 | ASISTENT MEDICAL PRINCIPAL | PL | 1 | 1 | 1 | 0 |
| 141 | ASISTENT MEDICAL PRINCIPAL | PL | 1 | 1 | 1 | 0 |
| 142 | ASISTENT MEDICAL PRINCIPAL | PL | 1 | 1 | 1 | 0 |
| 143 | ASISTENT MEDICAL PRINCIPAL | PL | 1 | 1 | 1 | 0 |
| 144 | ASISTENT MEDICAL PRINCIPAL COORDONATOR | PL | 1 | 1 | 0 | 1 |
| 145 | ASISTENT MEDICAL PRINCIPAL | PL | 1 | 1 | 0 | 1 |
| 146 | ASISTENT MEDICAL PRINCIPAL | PL | 1 | 1 | 1 | 0 |
| 147 | ASISTENT MEDICAL | PL | 1 | 1 | 1 | 0 |

| | | | | | | |
|-----|---------------------------|-----|---|---|---|---|
| 148 | ASISTENT MEDICAL | PL | 1 | 1 | 0 | 1 |
| 149 | ASISTENT MEDICAL | PL | 1 | 1 | 1 | 0 |
| 150 | ASISTENT MEDICAL | S | 1 | 1 | 1 | 0 |
| 151 | ASISTENT MEDICAL DEBUTANT | PL | 1 | 1 | 0 | 1 |
| 152 | INFIRMIERA | M | 1 | 1 | 1 | 0 |
| 153 | INFIRMIERA | M | 1 | 1 | 1 | 0 |
| 154 | INFIRMIERA | M | 1 | 1 | 1 | 0 |
| 155 | INFIRMIERA | M | 1 | 1 | 1 | 0 |
| 156 | INFIRMIERA | M | 1 | 1 | 0 | 1 |
| 157 | INGRIJITOARE | G/M | 1 | 1 | 0 | 1 |

IX.SECTIA CHIRURGIE GENERALA-40 paturi din care 5 paturi COMPARTIMENT ORTOPEDIE
SI TRAUMATOLOGIE

| | | | | | | |
|-----|--------------------------------|-----|---|----|----|---|
| | | | | 35 | 28 | 7 |
| 158 | MEDIC SEF SECTIE GR. I | S | 1 | 1 | 1 | 0 |
| 159 | MEDIC SPECIALIST | S | 1 | 1 | 0 | 1 |
| 160 | MEDIC PRIMA rezervat | S | 1 | 1 | 0 | 1 |
| 161 | MEDIC SPECIALIST | S | 1 | 1 | 1 | 0 |
| 162 | MEDIC REZIDENT | S | 1 | 1 | 1 | 0 |
| 163 | MEDIC SPECIALIST | S | 1 | 1 | 1 | 0 |
| 164 | MEDIC SPECIALIST | S | 1 | 1 | 1 | 0 |
| 165 | ASISTENT MEDICAL PRINCIPAL SEF | PL | 1 | 1 | 1 | 0 |
| 166 | ASISTENT MEDICAL | PL | 1 | 1 | 1 | 0 |
| 167 | ASISTENT MEDICAL PRINCIPAL | PL | 1 | 1 | 1 | 0 |
| 168 | ASISTENT MEDICAL PRINCIPAL | PL | 1 | 1 | 1 | 0 |
| 169 | ASISTENT MEDICAL PRINCIPAL | PL | 1 | 1 | 1 | 0 |
| 170 | ASISTENT MEDICAL PRINCIPAL | PL | 1 | 1 | 1 | 0 |
| 171 | ASISTENT MEDICAL PRINCIPAL | PL | 1 | 1 | 1 | 0 |
| 172 | ASISTENT MEDICAL PRINCIPAL | PL | 1 | 1 | 1 | 0 |
| 173 | ASISTENT MEDICAL PRINCIPAL | PL | 1 | 1 | 1 | 0 |
| 174 | ASISTENT MEDICAL PRINCIPAL | PL | 1 | 1 | 1 | 0 |
| 175 | ASISTENT MEDICAL PRINCIPAL | PL | 1 | 1 | 1 | 0 |
| 176 | ASISTENT MEDICAL PRINCIPAL | PL | 1 | 1 | 1 | 0 |
| 177 | ASISTENT MEDICAL | PL | 1 | 1 | 1 | 0 |
| 178 | ASISTENT MEDICAL | PL | 1 | 1 | 0 | 1 |
| 179 | ASISTENT MEDICAL DEBUTANT | PL | 1 | 1 | 0 | 1 |
| 180 | REGISTRATOR MEDICAL | M | 1 | 1 | 1 | 0 |
| 181 | INFIRMIERA | M | 1 | 1 | 1 | 0 |
| 182 | INFIRMIERA | M | 1 | 1 | 1 | 0 |
| 183 | INFIRMIERA | M | 1 | 1 | 1 | 0 |
| 184 | INFIRMIERA | M | 1 | 1 | 1 | 0 |
| 185 | INFIRMIERA | M | 1 | 1 | 1 | 0 |
| 186 | INFIRMIERA | M | 1 | 1 | 1 | 0 |
| 187 | INFIRMIERA | M | 1 | 1 | 0 | 1 |
| 188 | INGRIJITOARE | G/M | 1 | 1 | 0 | 1 |
| 189 | INGRIJITOARE | G/M | 1 | 1 | 1 | 0 |
| 190 | INGRIJITOARE | G/M | 1 | 1 | 1 | 0 |
| 191 | INGRIJITOARE | G/M | 1 | 1 | 1 | 0 |
| 192 | INGRIJITOARE | G/M | 1 | 1 | 0 | 1 |

X. SECTIA BOLI INFECTIOASE-25 paturi

| | | | | | | |
|-----|--------------------------------|----|---|----|----|---|
| | | | | 20 | 17 | 3 |
| 193 | MEDIC SEF SECTIE GR.I | S | 1 | 1 | 1 | 0 |
| 194 | MEDIC SPECIALIST | S | 1 | 1 | 1 | 0 |
| 195 | ASISTENT MEDICAL PRINCIPAL SEF | PL | 1 | 1 | 0 | 1 |
| 196 | ASISTENT MEDICAL PRINCIPAL | PL | 1 | 1 | 1 | 0 |
| 197 | ASISTENT MEDICAL PRINCIPAL | PL | 1 | 1 | 1 | 0 |
| 198 | ASISTENT MEDICAL PRINCIPAL | PL | 1 | 1 | 1 | 0 |
| 199 | ASISTENT MEDICAL PRINCIPAL | PL | 1 | 1 | 1 | 0 |
| 200 | ASISTENT MEDICAL PRINCIPAL | PL | 1 | 1 | 1 | 0 |
| 201 | ASISTENT MEDICAL PRINCIPAL | PL | 1 | 1 | 1 | 0 |
| 202 | ASISTENT MEDICAL PRINCIPAL | PL | 1 | 1 | 1 | 0 |
| 203 | ASISTENT MEDICAL | PL | 1 | 1 | 0 | 1 |
| 204 | ASISTENT MEDICAL | PL | 1 | 1 | 1 | 0 |
| 205 | INFIRMIERA | M | 1 | 1 | 1 | 0 |

| | | | | | | |
|-----|--------------|-----|---|---|---|---|
| 206 | INFIRMIERA | M | 1 | 1 | 1 | 0 |
| 207 | INFIRMIERA | M | 1 | 1 | 1 | 0 |
| 208 | INFIRMIERA | M | 1 | 1 | 1 | 0 |
| 209 | INFIRMIERA | M | 1 | 1 | 1 | 0 |
| 210 | INGRIJITOARE | G/M | 1 | 1 | 1 | 0 |
| 211 | INGRIJITOARE | G/M | 1 | 1 | 1 | 0 |
| 212 | INGRIJITOARE | G/M | 1 | 1 | 0 | 1 |

XI.COMPARTIMENT DERMATOVENEROLOGIE=5 paturi

| | | | | | | |
|-----|---------------------------|----|---|---|---|---|
| | | | 1 | 4 | 2 | 2 |
| 213 | MEDIC SPECIALIST | S | 1 | 1 | 1 | 0 |
| 214 | ASISTENT MEDICAL | PL | 1 | 1 | 0 | 1 |
| 215 | ASISTENT MEDICAL DEBUTANT | PL | 1 | 1 | 0 | 1 |
| 216 | INFIRMIERA | M | 1 | 1 | 1 | 0 |

XII. SECTIA NEUROLOGIE-25 paturi

| | | | | | | |
|-----|--------------------------------|-----|---|----|----|----|
| | | | | 29 | 18 | 11 |
| 217 | MEDIC SEF SECTIE GR.I | S | 1 | 1 | 0 | 1 |
| 218 | MEDIC PRIMAR | S | 1 | 1 | 1 | 0 |
| 219 | MEDIC REZIDENT | S | 1 | 1 | 0 | 1 |
| 220 | MEDIC SPECIALIST | S | 1 | 1 | 1 | 0 |
| 221 | ASISTENT MEDICAL PRINCIPAL SEF | PL | 1 | 1 | 1 | 0 |
| 222 | ASISTENT MEDICAL PRINCIPAL | PL | 1 | 1 | 1 | 0 |
| 223 | ASISTENT MEDICAL PRINCIPAL | PL | 1 | 1 | 1 | 0 |
| 224 | ASISTENT MEDICAL PRINCIPAL | PL | 1 | 1 | 1 | 0 |
| 225 | ASISTENT MEDICAL PRINCIPAL | PL | 1 | 1 | 1 | 0 |
| 226 | ASISTENT MEDICAL PRINCIPAL | PL | 1 | 1 | 1 | 0 |
| 227 | ASISTENT MEDICAL PRINCIPAL | PL | 1 | 1 | 1 | 0 |
| 228 | ASISTENT MEDICAL PRINCIPAL | PL | 1 | 1 | 0 | 1 |
| 229 | ASISTENT MEDICAL | PL | 1 | 1 | 0 | 1 |
| 230 | ASISTENT MEDICAL | PL | 1 | 1 | 0 | 1 |
| 231 | ASISTENT MEDICAL | PL | 1 | 1 | 0 | 1 |
| 232 | ASISTENT MEDICAL DEBUTANT | PL | 1 | 1 | 1 | 0 |
| 233 | INFIRMIERA | M | 1 | 1 | 1 | 0 |
| 234 | INFIRMIERA | M | 1 | 1 | 1 | 0 |
| 235 | INFIRMIERA | M | 1 | 1 | 1 | 0 |
| 236 | INFIRMIERA | M | 1 | 1 | 1 | 0 |
| 237 | INFIRMIERA | M | 1 | 1 | 1 | 0 |
| 238 | INFIRMIERA | M | 1 | 1 | 0 | 1 |
| 239 | INFIRMIERA | M | 1 | 1 | 0 | 1 |
| 240 | INFIRMIERA | M | 1 | 1 | 0 | 1 |
| 241 | INFIRMIERA | M | 1 | 1 | 0 | 1 |
| 242 | INFIRMIERA | M | 1 | 1 | 1 | 0 |
| 243 | INGRIJITOARE | G/M | 1 | 1 | 1 | 0 |
| 244 | INGRIJITOARE | G/M | 1 | 1 | 1 | 0 |
| 245 | INGRIJITOARE | G/M | 1 | 1 | 0 | 1 |

XIII.SECTIA A.T.I.-15 paturi Categoria a II a

| | | | | | | |
|--|--|--|--|----|----|----|
| | | | | 38 | 26 | 12 |
|--|--|--|--|----|----|----|

XIII.1 TERAPIE INTENSIVA -6 paturi

| | | | | | | |
|-----|--------------------------------|----|---|----|----|---|
| | | | | 20 | 12 | 8 |
| 246 | MEDIC SEF SECTIE GR. I | S | 1 | 1 | 0 | 1 |
| 247 | MEDIC SPECIALIST | S | 1 | 1 | 0 | 1 |
| 248 | MEDIC SPECIALIST | S | 1 | 1 | 1 | 0 |
| 249 | ASISTENT MEDICAL PRINCIPAL SEF | S | 1 | 1 | 0 | 1 |
| 250 | ASISTENT MEDICAL PRINCIPAL | S | 1 | 1 | 1 | 0 |
| 251 | ASISTENT MEDICAL PRINCIPAL | PL | 1 | 1 | 1 | 0 |
| 252 | ASISTENT MEDICAL PRINCIPAL | PL | 1 | 1 | 1 | 0 |
| 253 | ASISTENT MEDICAL PRINCIPAL | PL | 1 | 1 | 1 | 0 |
| 254 | ASISTENT MEDICAL PRINCIPAL | PL | 1 | 1 | 0 | 1 |
| 255 | ASISTENT MEDICAL PRINCIPAL | PL | 1 | 1 | 0 | 1 |
| 256 | ASISTENT MEDICAL PRINCIPAL | PL | 1 | 1 | 1 | 0 |
| 257 | INFIRMIERA | M | 1 | 1 | 1 | 0 |
| 258 | INFIRMIERA | M | 1 | 1 | 1 | 0 |
| 259 | INFIRMIERA | M | 1 | 1 | 1 | 0 |

| | | | | | | |
|-----|--------------|-----|---|---|---|---|
| 260 | INFIRMIERA | M | 1 | 1 | 1 | 0 |
| 261 | INFIRMIERA | M | 1 | 1 | 0 | 1 |
| 262 | INGRIJITOARE | G/M | 1 | 1 | 1 | 0 |
| 263 | INGRIJITOARE | G/M | 1 | 1 | 0 | 1 |
| 264 | BRANCARDIER | G/M | 1 | 1 | 0 | 1 |
| 265 | BRANCARDIER | G/M | 1 | 1 | 0 | 1 |

XIII.2 TERAPIE INTENSIVA INGRIJIRE POSTOPERATORIE-9 paturi

| | | | | | | |
|-----|----------------------------|-----|---|----|----|---|
| | | | | 17 | 14 | 3 |
| 266 | MEDIC SPECIALIST | S | 1 | 1 | 1 | 0 |
| 267 | MEDIC REZIDENT | S | 1 | 1 | 1 | 0 |
| 268 | MEDIC REZIDENT | S | 1 | 1 | 0 | 1 |
| 269 | ASISTENT MEDICAL PRINCIPAL | PL | 1 | 1 | 1 | 0 |
| 270 | ASISTENT MEDICAL PRINCIPAL | S | 1 | 1 | 1 | 0 |
| 271 | ASISTENT MEDICAL PRINCIPAL | S | 1 | 1 | 1 | 0 |
| 272 | ASISTENT MEDICAL PRINCIPAL | PL | 1 | 1 | 1 | 0 |
| 273 | ASISTENT MEDICAL PRINCIPAL | S | 1 | 1 | 1 | 0 |
| 274 | ASISTENT MEDICAL PRINCIPAL | PL | 1 | 1 | 1 | 0 |
| 275 | ASISTENT MEDICAL | PL | 1 | 1 | 1 | 0 |
| 276 | ASISTENT MEDICAL | PL | 1 | 1 | 1 | 0 |
| 277 | INFIRMIERA | M | 1 | 1 | 1 | 0 |
| 278 | INFIRMIERA | M | 1 | 1 | 1 | 0 |
| 279 | INFIRMIERA | M | 1 | 1 | 0 | 1 |
| 280 | INFIRMIERA | M | 1 | 1 | 0 | 1 |
| 281 | INGRIJITOARE | G/M | 1 | 1 | 1 | 0 |
| 282 | BIOINGINER SPECIALIST | S | 1 | 1 | 0 | 1 |

XIII.3 UNITATE DE TRANSFUZII DE SANGE-POST FIX

| | | | | | | |
|-----|------------------|----|---|---|---|---|
| | | | | 1 | 0 | 1 |
| 283 | ASISTENT MEDICAL | PL | 1 | 1 | 0 | 1 |

XIV.COMPARTIMENT PSIHIATRIE-18 paturi

| | | | | | | |
|-----|--|-----|---|----|----|---|
| | | | | 17 | 16 | 1 |
| 284 | MEDIC PRIMAR | S | 1 | 1 | 1 | 0 |
| 285 | MEDIC SPECIALIST | S | 1 | 1 | 1 | 0 |
| 286 | ASISTENT MEDICAL PRINCIPAL | PL | 1 | 1 | 1 | 0 |
| 287 | ASISTENT MEDICAL PRINCIPAL | PL | 1 | 1 | 1 | 0 |
| 288 | ASISTENT MEDICAL PRINCIPAL | PL | 1 | 1 | 1 | 0 |
| 289 | ASISTENT MEDICAL PRINCIPAL | S | 1 | 1 | 1 | 0 |
| 290 | ASISTENT MEDICAL PRINCIPAL | PL | 1 | 1 | 1 | 0 |
| 291 | ASISTENT MEDICAL PRINCIPAL COORDONATOR | PL | 1 | 1 | 1 | 0 |
| 292 | ASISTENT MEDICAL DEBUTANT | PL | 1 | 1 | 0 | 1 |
| 293 | INFIRMIERA | M | 1 | 1 | 1 | 0 |
| 294 | INFIRMIERA | M | 1 | 1 | 1 | 0 |
| 295 | INFIRMIERA | M | 1 | 1 | 1 | 0 |
| 296 | INFIRMIERA | M | 1 | 1 | 1 | 0 |
| 297 | INFIRMIERA | M | 1 | 1 | 1 | 0 |
| 298 | INGRIJITOARE | G/M | 1 | 1 | 1 | 0 |
| 299 | INGRIJITOARE | G/M | 1 | 1 | 1 | 0 |
| 300 | BRANCARDIER | G/M | 1 | 1 | 1 | 0 |

XV. COMPARTIMENT PNEUMOLOGIE -15 paturi din care

10 paturi COMPARTIMENT PNEUMOLOGIE CRONICI 10 paturi

| | | | | | | |
|-----|------------------------------|-----|---|----|----|---|
| | | | | 13 | 13 | 0 |
| 301 | MEDIC REZIDENT | S | 1 | 1 | 1 | 0 |
| 302 | ASISTENT MEDICAL PRINCIPAL | PL | 1 | 1 | 1 | 0 |
| 303 | ASISTENT MEDICAL PRINCIPAL | PL | 1 | 1 | 1 | 0 |
| 304 | ASISTENT MEDICAL | PL | 1 | 1 | 1 | 0 |
| 305 | ASISTENT MEDICAL | PL | 1 | 1 | 1 | 0 |
| 306 | ASISTENT MEDICAL COORDONATOR | PL | 1 | 1 | 1 | 0 |
| 307 | ASISTENT MEDICAL DEBUTANT | PL | 1 | 1 | 1 | 0 |
| 308 | INFIRMIERA | M | 1 | 1 | 1 | 0 |
| 309 | INFIRMIERA | M | 1 | 1 | 1 | 0 |
| 310 | INFIRMIERA | M | 1 | 1 | 1 | 0 |
| 311 | INFIRMIERA | M | 1 | 1 | 1 | 0 |
| 312 | INFIRMIERA | M | 1 | 1 | 1 | 0 |
| 313 | INGRIJITOARE | G/M | 1 | 1 | 1 | 0 |

XVI. COMPARTIMENT PRIMIRI URGENTE-POSTURI FIXE

| | | | 39 | 29 | 10 |
|--------|--|-----|----|----|----|
| 314 | MEDIC SPECIALIST SEF CPU GRADUL I | S | 1 | 1 | 0 |
| 315 | MEDIC SPECIALIST | S | 1 | 1 | 1 |
| 316 | MEDIC SPECIALIST | S | 1 | 1 | 0 |
| 317 | MEDIC SPECIALIST | S | 1 | 1 | 0 |
| 318 | MEDIC SPECIALIST | S | 1 | 1 | 0 |
| 319 | MEDIC SPECIALIST | S | 1 | 1 | 0 |
| 320 | ASISTENT SOCIAL | S | 1 | 1 | 0 |
| 321 | ASISTENT MEDICAL PRINCIPAL | PL | 1 | 1 | 1 |
| 322 | ASISTENT MEDICAL PRINCIPAL | PL | 1 | 1 | 0 |
| 323 | ASISTENT MEDICAL PRINCIPAL SEF | PL | 1 | 1 | 0 |
| 324 | ASISTENT MEDICAL PRINCIPAL | PL | 1 | 1 | 0 |
| 325 | ASISTENT MEDICAL PRINCIPAL | S | 1 | 1 | 1 |
| 326 | ASISTENT MEDICAL PRINCIPAL | PL | 1 | 1 | 1 |
| 327 | ASISTENT MEDICAL | PL | 1 | 1 | 1 |
| 328 | ASISTENT MEDICAL PRINCIPAL | PL | 1 | 1 | 1 |
| 329 | ASISTENT MEDICAL PRINCIPAL | PL | 1 | 1 | 1 |
| 330 | ASISTENT MEDICAL PRINCIPAL | PL | 1 | 1 | 1 |
| 331 | ASISTENT MEDICAL PRINCIPAL | PL | 1 | 1 | 1 |
| 332 | ASISTENT MEDICAL | PL | 1 | 1 | 1 |
| 333 | ASISTENT MEDICAL | PL | 1 | 1 | 1 |
| 334 | ASISTENT MEDICAL | PL | 1 | 1 | 1 |
| 335 | ASISTENT MEDICAL DEBUTANT | PL | 1 | 1 | 1 |
| 336 | REGISTRATOR MEDICAL | M | 1 | 1 | 1 |
| 337 | INFIRMIERA | G/M | 1 | 1 | 1 |
| 338 | INFIRMIERA | G/M | 1 | 1 | 1 |
| 339 | INFIRMIERA | G/M | 1 | 1 | 1 |
| 340 | INFIRMIERA | G/M | 1 | 1 | 0 |
| 341 | INFIRMIERA | G/M | 1 | 1 | 0 |
| 342 | INGRIJITOARE | G | 1 | 1 | 1 |
| 343 | INGRIJITOARE | G | 1 | 1 | 1 |
| 344 | INGRIJITOARE | G | 1 | 1 | 1 |
| 345 | INGRIJITOARE | G | 1 | 1 | 0 |
| 346 | INGRIJITOARE | G | 1 | 1 | 1 |
| 347 | BRANCARDIER | G | 1 | 1 | 1 |
| 348 | BRANCARDIER | G | 1 | 1 | 1 |
| 349 | BRANCARDIER | G | 1 | 1 | 1 |
| 350 | BRANCARDIER | G | 1 | 1 | 1 |
| 351 | BRANCARDIER | G | 1 | 1 | 1 |
| 352 | BRANCARDIER | G | 1 | 1 | 1 |
| XVII. | BIROU INTERNARI | | | 5 | 3 |
| 353 | REGISTRATOR MEDICAL PRINCIPAL | M | 1 | 1 | 1 |
| 354 | REGISTRATOR MEDICAL PRINCIPAL | M | 1 | 1 | 1 |
| 355 | REGISTRATOR MEDICAL | M | 1 | 1 | 0 |
| 356 | REGISTRATOR MEDICAL DEBUTANT | M | 1 | 1 | 0 |
| 357 | REGISTRATOR MEDICAL DEBUTANT | M | 1 | 1 | 0 |
| XVIII. | STERILIZARE-POSTURI FIXE | | | 5 | 4 |
| 358 | ASISTENT MEDICAL PRINCIPAL SEF cu delegati | PL | 1 | 1 | 1 |
| 359 | ASISTENT MEDICAL PRINCIPAL | PL | 1 | 1 | 1 |
| 360 | ASISTENT MEDICAL PRINCIPAL | PL | 1 | 1 | 1 |
| 361 | ASISTENT MEDICAL PRINCIPAL | PL | 1 | 1 | 1 |
| 362 | ASISTENT MEDICAL | PL | 1 | 1 | 0 |
| XIX. | BLOC OPERATOR -POSTURI FIXE | | | 15 | 10 |
| 363 | MEDIC SPECIALIST | S | 1 | 1 | 1 |
| 364 | ASISTENT MEDICAL PRINCIPAL SEF cu delegati | PL | 1 | 1 | 1 |
| 365 | ASISTENT MEDICAL PRINCIPAL | PL | 1 | 1 | 1 |
| 366 | ASISTENT MEDICAL PL | PL | 1 | 1 | 1 |
| 367 | ASISTENT MEDICAL PRINCIPAL | PL | 1 | 1 | 1 |
| 368 | ASISTENT MEDICAL PRINCIPAL | PL | 1 | 1 | 1 |

| | | | | | | |
|-----|--------------|---|---|---|---|---|
| 369 | INFIRMIERA | M | 1 | 1 | 0 | 1 |
| 370 | INFIRMIERA | M | 1 | 1 | 0 | 1 |
| 371 | INFIRMIERA | M | 1 | 1 | 0 | 1 |
| 372 | INGRIJITOARE | G | 1 | 1 | 1 | 0 |
| 373 | INGRIJITOARE | G | 1 | 1 | 1 | 0 |
| 374 | INGRIJITOARE | G | 1 | 1 | 0 | 1 |
| 375 | BRANCARDIER | G | 1 | 1 | 1 | 0 |
| 376 | BRANCARDIER | G | 1 | 1 | 1 | 0 |
| 377 | BRANCARDIER | G | 1 | 1 | 0 | 1 |

XX.FARMACIA CU CIRCUIT INCHIS

| | | | | | | |
|-----|--|----|----|---|---|---|
| | | | 10 | 7 | 3 | |
| 378 | FARMACIST SEF GR. I | S | 1 | 1 | 0 | 1 |
| 379 | FARMACIST | S | 1 | 1 | 1 | 0 |
| 380 | ASISTENT MEDICAL PRINCIPAL COORDONATOR | PL | 1 | 1 | 1 | 0 |
| 381 | ASISTENT MEDICAL PRINCIPAL | PL | 1 | 1 | 1 | 0 |
| 382 | ASISTENT MEDICAL PRINCIPAL | PL | 1 | 1 | 1 | 0 |
| 383 | ASISTENT MEDICAL PRINCIPAL | PL | 1 | 1 | 0 | 1 |
| 384 | ASISTENT MEDICAL PRINCIPAL | PL | 1 | 1 | 0 | 1 |
| 385 | OPERATOR CONTROLOR DATE II | M | 1 | 1 | 1 | 0 |
| 386 | INGRIJITOARE | G | 1 | 1 | 1 | 0 |
| 387 | INGRIJITOARE | G | 1 | 1 | 1 | 0 |

XXI.LABORATOR ANALIZE MEDICALE CU PUNCT DE LUCRU IN AMBULATORIUL INTEGRAT-POSTURI FIXE

| | | | | | | |
|-----|--------------------------------------|----|----|----|---|---|
| | | | 23 | 16 | 7 | |
| 388 | MEDIC SPECIALIST SEF LABORATOR GR.II | S | 1 | 1 | 0 | 1 |
| 389 | MEDIC REZIDENT | S | 1 | 1 | 1 | 0 |
| 390 | CHIMIST PRINCIPAL | S | 1 | 1 | 1 | 0 |
| 391 | BIOLOG PRINCIPAL | S | 1 | 1 | 1 | 0 |
| 392 | CHIMIST PRINCIPAL | S | 1 | 1 | 1 | 0 |
| 393 | BIOLOG SPECIALIST | S | 1 | 1 | 1 | 0 |
| 394 | BIOLOG | S | 1 | 1 | 0 | 1 |
| 395 | ASISTENT MEDICAL PRINCIPAL SEF | PL | 1 | 1 | 1 | 0 |
| 396 | ASISTENT MEDICAL PRINCIPAL | PL | 1 | 1 | 1 | 0 |
| 397 | ASISTENT MEDICAL PRINCIPAL | PL | 1 | 1 | 1 | 0 |
| 398 | ASISTENT MEDICAL PRINCIPAL | PL | 1 | 1 | 0 | 1 |
| 399 | ASISTENT MEDICAL PRINCIPAL | PL | 1 | 1 | 1 | 0 |
| 400 | ASISTENT MEDICAL PRINCIPAL | PL | 1 | 1 | 1 | 0 |
| 401 | ASISTENT MEDICAL PRINCIPAL | PL | 1 | 1 | 1 | 0 |
| 402 | ASISTENT MEDICAL PRINCIPAL | PL | 1 | 1 | 1 | 0 |
| 403 | ASISTENT MEDICAL | PL | 1 | 1 | 1 | 0 |
| 404 | ASISTENT MEDICAL | PL | 1 | 1 | 0 | 1 |
| 405 | ASISTENT MEDICAL DEBUTANT | PL | 1 | 1 | 0 | 1 |
| 406 | ASISTENT MEDICAL DEBUTANT | PL | 1 | 1 | 1 | 0 |
| 407 | REGISTRATOR MEDICAL PRINCIPAL | M | 1 | 1 | 1 | 0 |
| 408 | INGRIJITOR | G | 1 | 1 | 0 | 1 |
| 409 | INGRIJITOR | G | 1 | 1 | 1 | 0 |
| 410 | INGRIJITOR | G | 1 | 1 | 0 | 1 |

XXII. LABORATOR RADIOLOGIE SI IMAGISTICA MEDICALA CU PUNCT DE LUCRU IN AMBULATORIU INTEGRAT-POSTURI FIXE

| | | | | | | |
|-----|--------------------------------|----|----|----|---|---|
| | | | 13 | 10 | 3 | |
| 411 | MEDIC SEF LABORATOR GR.I | S | 1 | 1 | 1 | 0 |
| 412 | MEDIC SPECIALIST | S | 1 | 1 | 1 | 0 |
| 413 | MEDIC SPECIALIST | S | 1 | 1 | 1 | 0 |
| 414 | ASISTENT MEDICAL PRINCIPAL SEF | PL | 1 | 1 | 1 | 0 |
| 415 | ASISTENT MEDICAL PRINCIPAL | PL | 1 | 1 | 1 | 0 |
| 416 | ASISTENT MEDICAL PRINCIPAL | PL | 1 | 1 | 1 | 0 |
| 417 | ASISTENT MEDICAL PRINCIPAL | PL | 1 | 1 | 1 | 0 |
| 418 | ASISTENT MEDICAL PRINCIPAL | PL | 1 | 1 | 0 | 1 |
| 419 | ASISTENT MEDICAL DEBUTANT | PL | 1 | 1 | 1 | 0 |
| 420 | SORA MEDICALA PRINCIPALA | M | 1 | 1 | 1 | 0 |
| 421 | INGRIJITOR | G | 1 | 1 | 0 | 1 |
| 422 | INGRIJITOR | G | 1 | 1 | 0 | 1 |
| 423 | INGRIJITOR | G | 1 | 1 | 0 | 1 |

XXIII. SERVICIU ANATOMIE PATOLOGICA CU COMPARTIMENT
CITOLOGIE, HISTOPATOLOGIE, PROSECTURA

| | | | | | | |
|-----|----------------------------|----|---|---|---|---|
| | | | | 6 | 5 | 1 |
| 424 | MEDIC PRIMAR | S | 1 | 1 | 1 | 0 |
| 425 | BIOCHIMIST | S | 1 | 1 | 1 | 0 |
| 426 | SORA MEDICALA PRINCIPALA | M | 1 | 1 | 1 | 0 |
| 427 | ASISTENT MEDICAL PRINCIPAL | PL | 1 | 1 | 0 | 1 |
| 428 | AUTOPSIER | G | 1 | 1 | 1 | 0 |
| 429 | INGRIJITOARE | G | 1 | 1 | 1 | 0 |

XXIV. LABORATOR EXPLORARI FUNCTIONALE-POST FIX

| | | | | | | |
|-----|-------------------------------|----|---|---|---|---|
| | | | | 3 | 2 | 1 |
| 430 | BIOINGINER MEDICAL SPECIALIST | S | 1 | 1 | 1 | 0 |
| 431 | ASISTENT MEDICAL DEBUTANT | PL | 1 | 1 | 1 | 0 |
| 432 | ASISTENT MEDICAL | PL | 1 | 1 | 0 | 1 |

XXV. COMPARTIMENT DE PREVENIRE A INFECTIILOR
ASOCIATE ASISTENTRIMEDICALE

| | | | | | | |
|-----|----------------------------|----|---|---|---|---|
| | | | | 4 | 3 | 1 |
| 433 | MEDIC NEZIDENT | S | 1 | 1 | 1 | 0 |
| 434 | MEDIC PRIMAR | S | 1 | 1 | 1 | 0 |
| 435 | ASISTENT MEDICAL PRINCIPAL | PL | 1 | 1 | 1 | 0 |
| 436 | INFIRMIER/AGENT DDD | G | 1 | 1 | 1 | 0 |

XXVI. BIROU DE EVALUARE SI STATISTICA MEDICALA-POSTURI FIXE

| | | | | | | |
|-----|--|----|---|---|---|---|
| | | | | 3 | 1 | 2 |
| 437 | BIOINGINER MEDICAL PRINCIPAL SEF BIROU | S | 1 | 1 | 1 | 0 |
| 438 | ASISTENT MEDICAL PRINCIPAL | PL | 1 | 1 | 0 | 1 |
| 439 | REGISTRATOR MEDICAL | M | 1 | 1 | 0 | 1 |

XXVII. CABINET DIABET ZAHARAT, NUTRITIE SI BOLI METABOLICE-POSTURI FIXE

| | | | | | | |
|-----|----------------------------|----|---|---|---|---|
| | | | | 4 | 2 | 2 |
| 440 | MEDIC SPECIALIST | S | 1 | 1 | 1 | 0 |
| 441 | MEDIC SPECIALIST | S | 1 | 1 | 0 | 1 |
| 442 | ASISTENT MEDICAL PRINCIPAL | PL | 1 | 1 | 1 | 0 |
| 443 | ASISTENT MEDICAL PRINCIPAL | PL | 1 | 1 | 0 | 1 |

XXVIII. CABINET PLANIFICARE FAMILIALA-POSTURI FIXE

| | | | | | | |
|-----|------------------|----|---|---|---|---|
| | | | | 2 | 1 | 1 |
| 444 | MEDIC PRIMAR | S | 1 | 1 | 1 | 0 |
| 445 | ASISTENT MEDICAL | PL | 1 | 1 | 0 | 1 |

XXIX. DISPENSAR T.B.C.

| | | | | | | |
|-----|------------------------------|----|---|---|---|---|
| | | | | 6 | 5 | 1 |
| 446 | MEDIC PRIMAR | S | 1 | 1 | 1 | 0 |
| 447 | MEDIC PRIMAR | S | 1 | 1 | 1 | 0 |
| 448 | ASISTENT MEDICAL COORDONATOR | S | 1 | 1 | 1 | 0 |
| 449 | ASISTENT MEDICAL PRINCIPAL | PL | 1 | 1 | 1 | 0 |
| 450 | ASISTENT MEDICAL PRINCIPAL | PL | 1 | 1 | 1 | 0 |
| 451 | INGRIJITOR | G | 1 | 1 | 1 | 0 |

XXX. BUCATARIE DIETETICA-POSTURI FIXE

| | | | | | | |
|-----|--|----|---|---|---|---|
| | | | | 2 | 0 | 2 |
| 452 | ASISTENT MEDICAL PRINCIPAL COORDONATOR | PL | 1 | 1 | 0 | 1 |
| 453 | ASISTENT MEDICAL DEBUTANT | S | 1 | 1 | 0 | 1 |

XXXI. SPALATORIE

| | | | | | | |
|-----|--------------------------|---|---|---|---|---|
| | | | | 6 | 4 | 2 |
| 454 | SPALATOREASA CU GESTIUNE | M | 1 | 1 | 1 | 0 |
| 455 | SPALATOREASA | M | 1 | 1 | 1 | 0 |
| 456 | SPALATOREASA | M | 1 | 1 | 1 | 0 |
| 457 | SPALATOREASA | M | 1 | 1 | 1 | 0 |
| 458 | SPALATOREASA | M | 1 | 1 | 0 | 1 |
| 459 | SPALATOREASA | M | 1 | 1 | 0 | 1 |

TOTAL MUNCITORI SI INGRIJITOARE

| | | | | | | |
|--|--|--|--|----|----|---|
| | | | | 43 | 34 | 9 |
| | | | | 41 | 34 | 7 |

XXXII. MUNCITORI

| | | | | | | |
|--|--|--|--|---|---|---|
| | | | | 7 | 7 | 0 |
|--|--|--|--|---|---|---|

LUMINA SI INCALZIRE

| | | | | | | |
|-----|----------------------------|---|---|---|---|---|
| | | | | | | |
| 460 | MUNCITOR CALIFICAT TR. III | G | 1 | 1 | 1 | 0 |

| | | | | | | | |
|---|---|---|--|---|---|---|---|
| | ELECTRICIAN DE INTRETINERE SI REPARATII | | | | 1 | 1 | 0 |
| 461 | MUNCITOR CALIFICAT TR.III | G | | 1 | 1 | 1 | 0 |
| 462 | MUNCITOR CALIFICAT TR.III | G | | 1 | 1 | 1 | 0 |
| | ZIDAR | | | | | | |
| 463 | MUNCITOR CALIFICAT TR. II | G | | 1 | 1 | 1 | 0 |
| | SUDOR | | | | | | |
| 464 | MUNCITOR CALIFICAT TR. III | G | | 1 | 1 | 1 | 0 |
| | INSTALATII DE APA SI CANAL | | | | | | |
| 465 | MUNCITOR CALIFICAT TR.III | G | | 1 | 1 | 1 | 0 |
| 466 | MUNCITOR CALIFICAT TR.III | | | 1 | 1 | 1 | 0 |
| XXXII.2 MUNCITORI BLOC ALIMENTAR | | | | | 8 | 8 | 0 |
| | BUCATAR | | | | | | |
| 467 | MUNCITOR CALIFICAT TR. IV | M | | 1 | 1 | 1 | 0 |
| 468 | MUNCITOR CALIFICAT TR. III | M | | 1 | 1 | 1 | 0 |
| | MUNCITOR NECALIFICAT TR.I | | | | | | |
| 469 | MUNCITOR NECALIFICAT TR.I | G | | 1 | 1 | 1 | 0 |
| 470 | MUNCITOR NECALIFICAT TR.I | G | | 1 | 1 | 1 | 0 |
| 471 | MUNCITOR NECALIFICAT TR.I | G | | 1 | 1 | 1 | 0 |
| 472 | MUNCITOR NECALIFICAT TR.I | G | | 1 | 1 | 1 | 0 |
| 473 | MUNCITOR NECALIFICAT TR.I | G | | 1 | 1 | 1 | 0 |
| 474 | MUNCITOR NECALIFICAT TR.I | G | | 1 | 1 | 1 | 0 |
| | INGRIJITOARE | | | | 2 | 0 | 2 |
| 475 | INGRIJITOARE | G | | 1 | 1 | 0 | 1 |
| 476 | INGRIJITOARE | G | | 1 | 1 | 0 | 1 |
| XXXII.3 MUNCITORI CARE DESERVESC CENTRALA TERMICA-POSTURI FIXE | | | | | 5 | 5 | 0 |
| 477 | MUNCITOR CALIFICAT TR. I | G | | 1 | 1 | 1 | 0 |
| 478 | MUNCITOR CALIFICAT TR. I | G | | 1 | 1 | 1 | 0 |
| 479 | MUNCITOR CALIFICAT TR. I SEFECHIDA | G | | 1 | 1 | 1 | 0 |
| 480 | MUNCITOR CALIFICAT TR. III | G | | 1 | 1 | 1 | 0 |
| 481 | MUNCITOR CALIFICAT TR. II | G | | 1 | 1 | 1 | 0 |
| XXXII.4 MUNCITORI CARE DESERVESC STATIA CENTRALA DE OXIGEN-POSTURI FIXE | | | | | 5 | 2 | 3 |
| 482 | MUNCITOR CALIFICAT TR. IV | G | | 1 | 1 | 1 | 0 |
| 483 | MUNCITOR CALIFICAT TR. III | G | | 1 | 1 | 0 | 1 |
| 484 | MUNCITOR CALIFICAT TR. IV | G | | 1 | 1 | 1 | 0 |
| 485 | MUNCITOR CALIFICAT TR. I | G | | 1 | 1 | 0 | 1 |
| 486 | MUNCITOR CALIFICAT TR. I | G | | 1 | 1 | 0 | 1 |
| XXXII.5 MUNCITORI CARE DESERVESC LIFTUL CU INSOTITOR-POSTURI FIXE | | | | | 5 | 5 | 0 |
| 487 | MUNCITOR CALIFICAT TR. IV | G | | 1 | 1 | 1 | 0 |
| 488 | MUNCITOR CALIFICAT TR. IV | G | | 1 | 1 | 1 | 0 |
| 489 | MUNCITOR CALIFICAT TR. IV | G | | 1 | 1 | 1 | 0 |
| 490 | MUNCITOR CALIFICAT TR. IV | G | | 1 | 1 | 1 | 0 |
| 491 | MUNCITOR CALIFICAT TR. IV | G | | 1 | 1 | 1 | 0 |
| XXXII.6 MUNCITORI CARE DESERVESC CENTRALA TELEFONICA-POSTURI FIXE | | | | | 2 | 1 | 1 |
| 492 | MUNCITOR CALIFICAT TR. III | M | | 1 | 1 | 1 | 0 |
| 493 | MUNCITOR CALIFICAT TR. III | M | | 1 | 1 | 0 | 1 |
| XXXII.7 ACTIVITATEA DE CONDUCERE AUTO | | | | | 2 | 2 | 0 |
| 494 | SOFER TR. II | G | | 1 | 1 | 1 | 0 |
| 495 | SOFER TR. II | G | | 1 | 1 | 1 | 0 |
| XXXII.8 FRIZER | | | | | 1 | 0 | 1 |
| 496 | MUNCITOR CALIFICAT TR. IV | G | | 1 | 1 | 0 | 1 |
| XXXII.9 INTRETINERE INVENTAR MOALE | | | | | 1 | 1 | 0 |
| 497 | MUNCITOR CALIFICAT TR. IV | G | | 1 | 1 | 1 | 0 |
| XXXII.10 INTRETINERE SPATII VERZI | | | | | 1 | 1 | 0 |

| | | | | | | |
|---|--|----|-----|-----|----|-----|
| 498 | MUNCITOR NECALIFICAT TR.I | G | 1 | 1 | 1 | 0 |
| XXXII.11 APROVIZIONARE,MANIPULARE ,DEPOZITARE SI DESERVIRE MIJLOACE DE TRANSPORT | | | | | | |
| 499 | MUNCITOR NECALIFICAT TR.I | G | 1 | 1 | 1 | 0 |
| XXXII.12 DESERVIRE GRUP ELECTROGEN | | | | | | |
| | ELECTRICIAN | | | 2 | 0 | 2 |
| 500 | MUNCITOR CALIFICAT TR. IV | G | 1 | 1 | 0 | 1 |
| 501 | MUNCITOR CALIFICAT TR. IV | G | 1 | 1 | 0 | 1 |
| XXXII.13 MUNCITORI CARE DESERVESC STATIA DE POMPE | | | | | | |
| 502 | MUNCITOR CALIFICAT TR. IV | G | 1 | 1 | 1 | 0 |
| XXXIII . PERSONAL CLERICAL | | | | | | |
| 503 | PREOT GR.II | S | 0.5 | 0.5 | 0 | 0.5 |
| XXXIV. PERSONAL T.E.S.A. | | | | | | |
| | | | | 16 | 13 | 3 |
| XXXIV.1 BIROU RUNOS | | | | | | |
| 504 | INSPECTOR DE SPECIALITATE GR I SEF BIROU | S | 1 | 1 | 1 | 0 |
| 505 | ECONOMICT GR IA | S | 1 | 1 | 1 | 0 |
| 506 | REFERENT IA | M | 1 | 1 | 1 | 0 |
| XXXIV.2 BIROU FINANCIAR CONTABILITATE | | | | | | |
| 507 | ECONOMIST GR I SEF BIROU GR. II rezervat | S | 1 | 1 | 0 | 1 |
| 508 | ECONOMIST GR.I A | S | 1 | 1 | 1 | 0 |
| 509 | ECONOMIST GR.I A | S | 1 | 1 | 1 | 0 |
| 510 | ECONOMIST GR.IA | S | 1 | 1 | 1 | 0 |
| XXXIV. 3 BIROU ACHIZITII PUBLICE,CONTRACTARE ,APROVIZIONARE | | | | | | |
| 511 | ECONOMIST IA SEF BIROU GR.II | S | 1 | 1 | 1 | 0 |
| 512 | ECONOMIST Gr. I | S | 1 | 1 | 1 | 0 |
| 513 | ECONOMIST GR. I | S | 1 | 1 | 1 | 0 |
| XXXIV.4 BIROU ADMINISTRATIV TRANSPORT TEHNIC | | | | | | |
| 514 | INGINER IA SEF BIROU GRADUL II | S | 1 | 1 | 1 | 0 |
| 515 | ECONOMIST GR.II | S | 1 | 1 | 1 | 0 |
| 516 | MAGAZINER TR. I | M | 1 | 1 | 1 | 0 |
| 517 | INGINER IA- TEHNIC | S | 1 | 1 | 0 | 1 |
| XXXIV.5 COMPARTIMENT SANATATE SI SEC. A MUNCII ,PSI,PROTECTIE CIVILA SI SITUATII DE URGENTA | | | | | | |
| 518 | INGINER IA | S | 1 | 1 | 0 | 1 |
| XXXIV.6 COMPARTIMENT JURIDIC | | | | | | |
| 519 | CONSILIER JURIDIC DEBUTANT | S | 1 | 1 | 1 | 0 |
| XXXIV.7 REGISTRATOR SI INGRIJITOR SECTOR ADMINISTRATIV | | | | | | |
| 520 | REGISTRATOR IN SECRETARIATUL SPITALULUI | M | 1 | 1 | 0 | 1 |
| 521 | INGRIJITOR SECTOR ADMINISTRATIV | M | 1 | 1 | 0 | 1 |
| XXXV. AMBULATORIUL INTEGRAT CU CABINETE IN SPECIALITATE | | | | | | |
| | | | | 31 | 16 | 15 |
| XXXV.1 CABINET MEDICINA INTERNA | | | | | | |
| 522 | ASISTENT MEDICAL | PL | 1 | 1 | 1 | 0 |
| XXXV.2 CABINET O.R.L. | | | | | | |
| 523 | MEDIC SPECIALIST | S | 1 | 1 | 0 | 1 |
| 524 | ASISTENT MEDICAL PRINCIPAL | PL | 1 | 1 | 0 | 1 |
| XXXV.3CABINET OFTALMOLOGIE | | | | | | |
| 525 | MEDIC PRIMAR | S | 1 | 1 | 1 | 0 |
| 526 | MEDIC SPECIALIST | S | 1 | 1 | 0 | 1 |
| 527 | ASISTENT MEDICAL PRINCIPAL | PL | 1 | 1 | 1 | 0 |
| XXXV.4 CABINET CHIRURGIE GENERALA | | | | | | |
| 528 | ASISTENT MEDICAL PRINCIPAL COORDONATOR | PL | 1 | 1 | 1 | 0 |
| XXXV.5 CABINET OBSTETRICA GINECOLOGIE | | | | | | |
| 529 | ASISTENT MEDICAL PRINCIPAL | PL | 1 | 1 | 1 | 0 |

| | | | | | | |
|---|-------------------------------|----|---|---|---|---|
| XXXV.6 CABINET PEDIATRIE | | | | | | |
| 530 | ASISTENT MEDICAL PRINCIPAL | PL | 1 | 1 | 1 | 0 |
| XXXV.7 CABINET NEUROLOGIE | | | | | | |
| 531 | ASISTENT MEDICAL | PL | 1 | 1 | 0 | 1 |
| XXXV.8 CABINET DERMATOVENEROLOGIE | | | | | | |
| 532 | ASISTENT MEDICAL | PL | 1 | 1 | 1 | 0 |
| XXXV.9 CABINET ENDOCRINOLOGIE | | | | | | |
| 533 | MEDIC SPECIALIST | S | 1 | 1 | 0 | 1 |
| 534 | ASISTENT MEDICAL | PL | 1 | 1 | 0 | 1 |
| XXXV.10 CABINET PSIHIATRIE | | | | | | |
| 535 | ASISTENT MEDICAL PRINCIPAL | PL | 1 | 1 | 0 | 1 |
| XXXV.11 CABINET RECUPERARE , MEDICINA FIZICA SI BALNEOLOGIE | | | | | | |
| 536 | MEDIC REZIDENT | S | 1 | 1 | 1 | 0 |
| 537 | MEDIC REZIDENT | S | 1 | 1 | 1 | 0 |
| 538 | KINETOTERAPEUT DEBUTANT | S | 1 | 1 | 0 | 1 |
| 539 | ASISTENT MEDICAL PRINCIPAL | PL | 1 | 1 | 1 | 0 |
| 540 | ASISTENT MEDICAL PRINCIPAL | PL | 1 | 1 | 0 | 1 |
| XXXV.12 CABINET CARDIOLOGIE | | | | | | |
| 541 | MEDIC REZIDENT | S | 1 | 1 | 1 | 0 |
| 542 | MEDIC REZIDENT | S | 1 | 1 | 1 | 0 |
| 543 | ASISTENT MEDICAL | PL | 1 | 1 | 0 | 1 |
| XXXV.13 CABINET ORTOPEDIE SI TRAUMATOLOGIE | | | | | | |
| 544 | ASISTENT MEDICAL | PL | 1 | 1 | 0 | 1 |
| XXXV.14 CABINET STOMATOLOGIE | | | | | | |
| 545 | MEDIC DENTIST | S | 1 | 1 | 1 | 0 |
| 546 | MEDIC DENTIST | S | 1 | 1 | 0 | 1 |
| 547 | ASISTENT MEDICAL | PL | 1 | 1 | 0 | 1 |
| XXXIV.15 SALA DE TRATAMENT | | | | | | |
| 548 | ASISTENT MEDICAL | PL | 1 | 1 | 0 | 1 |
| XXXV.16 COMPARTIMENT STATISTICA MEDICALA | | | | | | |
| 549 | REGISTRATOR MEDICAL PRINCIPAL | PL | 1 | 1 | 1 | 0 |
| XXXV.17 PERSONAL DE CURATENIE | | | | | | |
| 550 | INGRIJITOR | G | 1 | 1 | 1 | 0 |
| 551 | INGRIJITOR | G | 1 | 1 | 1 | 0 |
| 552 | INGRIJITOR | G | 1 | 1 | 0 | 1 |
| TOTAL | | | | | | |

Președinte de ședință,
Gheorghe Hoha



(Handwritten signature in blue ink)

Secretarul municipiului Huși
jr. Monica Dumitrașcu

(Handwritten signature in blue ink)