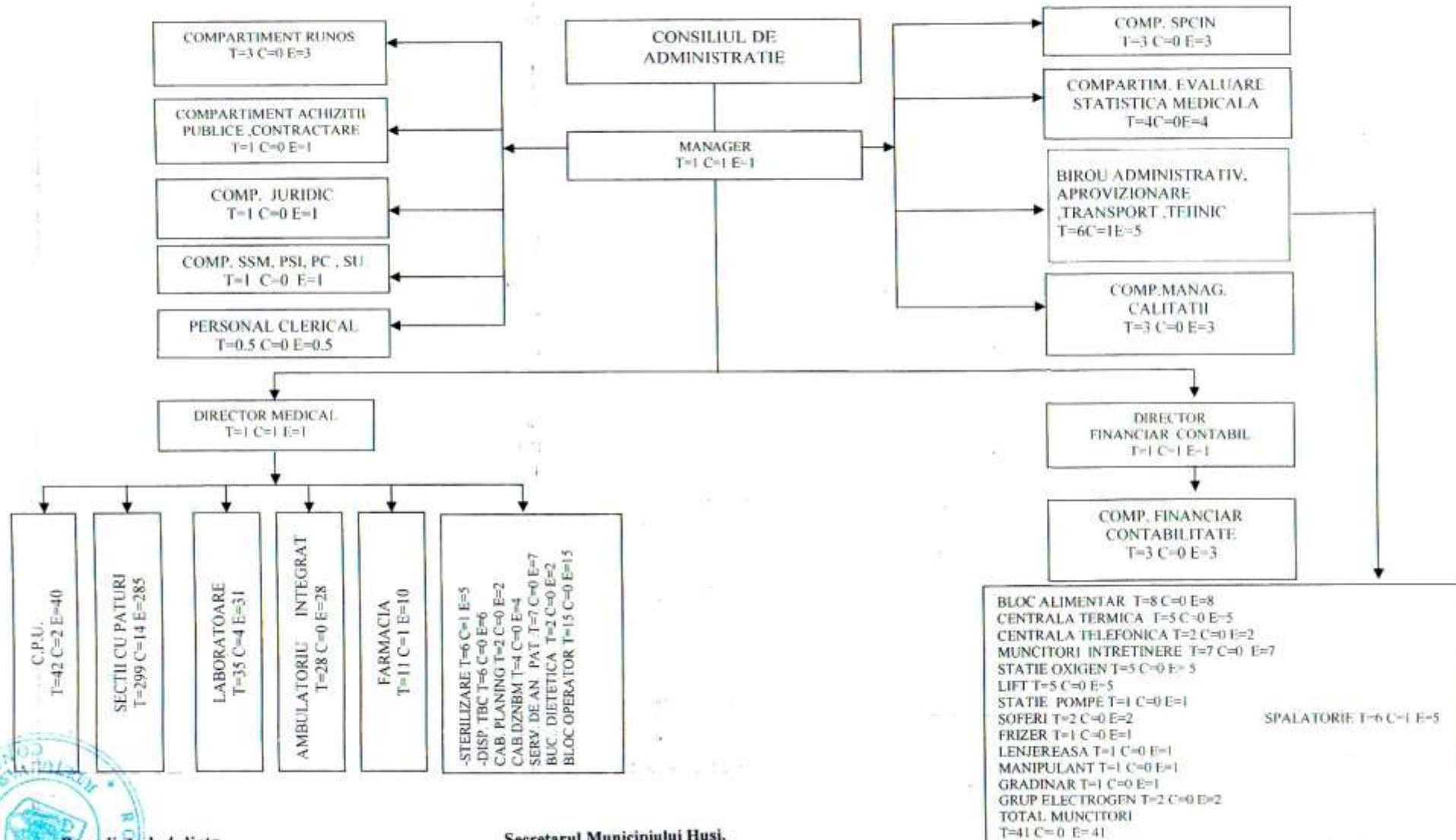


**ORGANIGRAMA SPITALULUI MUNICIPAL „DIMITRIE CASTROIAN” HUSI-01.05.2014**  
**TOTAL POSTURI=532.5; DIN CARE POSTURI CONDUCERE=27; TOTAL POSTURI EXECUTIE=505.5**



Presedinte de sedinta,  
 Hoja Gheorghe

Secretarul Municipiului Husi,  
 jr. Monica Dumitrascu

**STAT DE FUNCTII**  
 pentru Spitalul Municipal "Dimitrie Costoian "Husi

Nr. crt.	COMPARTIMENT/FUNCTIE	Nivel de studii	Cuantum post	Posturi normate	Posturi ocupate	Posturi vacante
<b>I.COMITET DIRECTOR</b>				<b>3</b>	<b>3</b>	<b>0</b>
1	MANAGER, GR. II	S	1	1	1	0
2	DIRECTOR MEDICAL GR. II	S	1	1	1	0
3	DIRECTOR FINANCIAR CONTABIL, GR. II	S	1	1	1	0
<b>II. COMPARTIMENT MANAGEMENT AL CALITATII-POSTURI FIXE</b>				<b>3</b>	<b>0</b>	<b>3</b>
4	MEDIC SPECIALIST	S	1	1	0	1
5	ASISTENT MEDICAL PL	PL	1	1	0	1
6	ECONOMIST GR.II	S	1	1	0	1
<b>III.SECTIA MEDICINA INTERNA-50 paturi din care 20 paturi COMPARTIMENT CARDIOLOGIE total 50 paturi</b>				<b>41</b>	<b>30</b>	<b>11</b>
7	MEDIC SEF SECTIE , GR.I	S	1	1	0	1
8	MEDIC PRIMAR sef sectie cu delegatie	S	1	1	1	0
9	MEDIC SPECIALIST	S	1	1	1	0
10	MEDIC SPECIALIST	S	1	1	1	0
11	MEDIC SPECIALIST	S	1	1	1	0
12	MEDIC REZIDENT	S	1	1	1	0
13	MEDIC REZIDENT	S	1	1	1	0
14	ASISTENT MEDICAL PRINCIPAL SEF cu delegatie	PL	1	1	1	0
15	ASISTENT MEDICAL PRINCIPAL	PL	1	1	1	0
16	ASISTENT MEDICAL PRINCIPAL	PL	1	1	1	0
17	ASISTENT MEDICAL PRINCIPAL	PL	1	1	1	0
18	ASISTENT MEDICAL PRINCIPAL	PL	1	1	1	0
19	ASISTENT MEDICAL PRINCIPAL	PL	1	1	1	0
20	ASISTENT MEDICAL PRINCIPAL	PL	1	1	1	0
21	ASISTENT MEDICAL PRINCIPAL	PL	1	1	1	0
22	ASISTENT MEDICAL PRINCIPAL	S	1	1	1	0
23	ASISTENT MEDICAL PRINCIPAL	PL	1	1	0	1
24	ASISTENT MEDICAL	PL	1	1	1	0
25	ASISTENT MEDICAL	PL	1	1	1	0
26	ASISTENT MEDICAL	PL	1	1	1	0
27	ASISTENT MEDICAL	PL	1	1	0	1
28	ASISTENT MEDICAL	PL	1	1	0	1
29	ASISTENT MEDICAL	PL	1	1	0	1
30	ASISTENT MEDICAL DEBUTANT	PL	1	1	0	1
31	ASISTENT MEDICAL DEBUTANT	PL	1	1	0	1
32	ASISTENT MEDICAL DEBUTANT	PL	1	1	0	1
33	INFIRMIERA	M	1	1	1	0
34	INFIRMIERA	M	1	1	1	0
35	INFIRMIERA	M	1	1	1	0
36	INFIRMIERA	M	1	1	1	0
37	INFIRMIERA	M	1	1	1	0

38	INFIRMIERA	M	1	1	1	0
39	INFIRMIERA	M	1	1	1	0
40	INFIRMIERA	M	1	1	1	0
41	INFIRMIERA	M	1	1	1	0
42	INGRIJITOARE	G/M	1	1	1	0
43	INGRIJITOARE	G/M	1	1	1	0
44	INGRIJITOARE	G/M	1	1	1	0
45	INGRIJITOARE	G/M	1	1	0	1
46	INGRIJITOARE	G/M	1	1	0	1
47	INGRIJITOARE	G/M	1	1	0	1
<b>IV.SECTIA MEDICINA INTERNA CRONICI-30 paturi</b>			<b>22</b>	<b>15</b>	<b>7</b>	
48	MEDIC SEF SECTIE .GR.I	S	1	1	0	1
49	MEDIC PRIMAR sef sectie cu delegatie	S	1	1	1	0
50	MEDIC REZIDENT	S	1	1	1	0
51	KINETOTERAPEUT	S	1	1	0	1
52	ASISTENT MEDICAL PRINCIPAL SEF cu delegatie	PL	1	1	1	0
53	ASISTENT MEDICAL PRINCIPAL	S	1	1	1	0
54	ASISTENT MEDICAL PRINCIPAL	PL	1	1	1	0
55	ASISTENT MEDICAL PRINCIPAL	PL	1	1	1	0
56	ASISTENT MEDICAL PRINCIPAL	PL	1	1	1	0
57	ASISTENT MEDICAL	PL	1	1	1	0
58	ASISTENT MEDICAL DEBUTANT	PL	1	1	0	1
59	INFIRMIERA	M	1	1	1	0
60	INFIRMIERA	M	1	1	1	0
61	INFIRMIERA	M	1	1	1	0
62	INFIRMIERA	M	1	1	1	0
63	INFIRMIERA	M	1	1	1	0
64	INFIRMIERA	M	1	1	1	0
65	INFIRMIERA	M	1	1	1	0
66	INFIRMIERA	M	1	1	0	1
67	INFIRMIERA	M	1	1	0	1
68	INGRIJITOARE	M	1	1	0	1
69	INGRIJITOARE	G/M	1	1	0	1
<b>V. COMPARTIMENT PEDIATRIE-20 paturi</b>			<b>23</b>	<b>17</b>	<b>6</b>	
70	MEDIC SPECIALIST	S	1	1	1	0
71	MEDIC SPECIALIST	S	1	1	1	0
72	MEDIC REZIDENT	S	1	1	1	0
73	PSIHOLOG PRACTICANT	S	1	1	1	0
74	ASISTENT MEDICAL PRINCIPAL	PL	1	1	1	0
75	ASISTENT MEDICAL PRINCIPAL	PL	1	1	1	0
76	ASISTENT MEDICAL PRINCIPAL	PL	1	1	1	0
77	ASISTENT MEDICAL PRINCIPAL	PL	1	1	1	0
78	ASISTENT MEDICAL PRINCIPAL	PL	1	1	1	0
79	ASISTENT MEDICAL PRINCIPAL	PL	1	1	1	0
80	ASISTENT MEDICAL PRINCIPAL	PL	1	1	1	0
81	ASISTENT MEDICAL	PL	1	1	0	1
<b>V.1 POSTURI FIXE-BUCATARIE DIETETICA</b>						
82	ASISTENT MEDICAL	PL	1	1	1	0
<b>V.2 POSTURI FIXE-ATI</b>						
83	ASISTENT MEDICAL	PL	1	1	0	1
<b>V.3 POSTURI FIXE-TRIAJ BOLNAVI</b>						
84	ASISTENT MEDICAL	PL	1	1	0	1
85	INFIRMIERA	M	1	1	1	0
86	INFIRMIERA	M	1	1	1	0
87	INFIRMIERA	M	1	1	1	0
88	INFIRMIERA	M	1	1	1	0
89	INFIRMIERA	M	1	1	1	0
90	INGRIJITOARE	G/M	1	1	0	1

91	INGRIJITOARE	G/M	1	1	0	1
92	INGRIJITOARE	G/M	1	1	0	1
<b>VI. SECTIA OBSTETRICA GINECOLOGIE-35 paturi</b>			<b>41</b>	<b>27</b>	<b>14</b>	
93	MEDIC SEF SECTIE, GR. I	S	1	1	0	1
94	MEDIC PRIMAR sef sectie cu delegatie	S	1	1	1	0
95	MEDIC PRIMAR	S	1	1	1	0
96	MEDIC PRIMAR	S	1	1	1	0
97	MEDIC REZIDENT	S	1	1	1	0
98	ASISTENT MEDICAL PRINCIPAL SEF cu delegatie	PL	1	1	1	0
99	ASISTENT MEDICAL PRINCIPAL	PL	1	1	1	0
100	ASISTENT MEDICAL PRINCIPAL	PL	1	1	1	0
101	ASISTENT MEDICAL PRINCIPAL	PL	1	1	1	0
102	ASISTENT MEDICAL PRINCIPAL	PL	1	1	1	0
103	ASISTENT MEDICAL PRINCIPAL	PL	1	1	0	1
104	ASISTENT MEDICAL PRINCIPAL	PL	1	1	0	1
105	ASISTENT MEDICAL PRINCIPAL	PL	1	1	0	1
106	ASISTENT MEDICAL	PL	1	1	0	1
107	ASISTENT MEDICAL	PL	1	1	0	1
108	ASISTENT MEDICAL DEBUTANT	PL	1	1	0	1
109	INFIRMIERA	M	1	1	1	0
110	INFIRMIERA	M	1	1	1	0
111	INFIRMIERA	M	1	1	1	0
112	INFIRMIERA	M	1	1	1	0
113	INFIRMIERA	M	1	1	1	0
114	INFIRMIERA	M	1	1	1	0
115	INGRIJITOARE *	G/M	1	1	0	1
116	INGRIJITOARE	G/M	1	1	1	0
117	INGRIJITOARE	G/M	1	1	1	0
118	INGRIJITOARE	G/M	1	1	0	1
<b>VI.1 SALA DE NASTERI-POSTURI FIXE</b>						
119	MEDIC PRIMAR rezervat	S	1	1	0	1
120	ASISTENT MEDICAL PRINCIPAL	PL	1	1	1	0
121	ASISTENT MEDICAL PRINCIPAL	PL	1	1	1	0
122	ASISTENT MEDICAL PRINCIPAL	PL	1	1	1	0
123	ASISTENT MEDICAL PRINCIPAL	PL	1	1	1	0
<b>VI.2 SALA DE OPERATII-POSTURI FIXE</b>						
124	ASISTENT MEDICAL PRINCIPAL	PL	1	1	1	0
125	ASISTENT MEDICAL PRINCIPAL	PL	1	1	1	0
126	ASISTENT MEDICAL PRINCIPAL	PL	1	1	1	0
127	ASISTENT MEDICAL PRINCIPAL	PL	1	1	1	0
128	INFIRMIERA	M	1	1	1	0
129	INFIRMIERA	M	1	1	0	1
130	INFIRMIERA	M	1	1	0	1
131	INGRIJITOARE	G/M	1	1	1	0
132	INGRIJITOARE	G/M	1	1	0	1
133	INGRIJITOARE	G/M	1	1	0	1
<b>VII.COMPARTIMENT NEONATOLOGIE-12 paturi</b>			<b>20</b>	<b>14</b>	<b>6</b>	
134	MEDIC REZIDENT	S	1	1	1	0
135	MEDIC REZIDENT	S	1	1	1	0
136	ASISTENT MEDICAL PRINCIPAL	PL	1	1	1	0
137	ASISTENT MEDICAL PRINCIPAL	PL	1	1	1	0
138	ASISTENT MEDICAL PRINCIPAL	PL	1	1	1	0
139	ASISTENT MEDICAL PRINCIPAL	PL	1	1	1	0
140	ASISTENT MEDICAL PRINCIPAL	PL	1	1	1	0
141	ASISTENT MEDICAL PRINCIPAL	PL	1	1	1	0
142	ASISTENT MEDICAL PRINCIPAL	PL	1	1	1	0
143	ASISTENT MEDICAL	PL	1	1	0	1
144	ASISTENT MEDICAL	PL	1	1	0	1

145	ASISTENT MEDICAL	PL	1	1	0	1
146	ASISTENT MEDICAL DEBUTANT	PL	1	1	0	1
147	ASISTENT MEDICAL DEBUTANT	PL	1	1	0	1
148	INFIRMIERA	M	1	1	1	0
149	INFIRMIERA	M	1	1	1	0
150	INFIRMIERA	M	1	1	1	0
151	INFIRMIERA	M	1	1	1	0
152	INFIRMIERA	M	1	1	1	0
153	INGRIJITOARE	G/M	1	1	0	1

**VIII.SECTIA CHIRURGIE GENERALA-40 paturi din care 5 paturi COMPARTIMENT ORTOPEDIE SI TRAUMATOLOGIE**

			33	25	8	
154	MEDIC SEF SECTIE GR. I	S	1	1	0	1
155	MEDIC PRIMAR sef sectie cu delegatie	S	1	1	1	0
156	MEDIC PRIMAR rezervat	S	1	1	0	1
157	MEDIC REZIDENT	S	1	1	1	0
158	MEDIC REZIDENT	S	1	1	1	0
159	MEDIC SPECIALIST	S	1	1	1	0
160	MEDIC SPECIALIST	S	1	1	1	0
161	ASISTENT MEDICAL PRINCIPAL SEF cu delegatie	PL	1	1	1	0
162	ASISTENT MEDICAL PRINCIPAL	PL	1	1	1	0
163	ASISTENT MEDICAL PRINCIPAL	PL	1	1	1	0
164	ASISTENT MEDICAL PRINCIPAL	PL	1	1	1	0
165	ASISTENT MEDICAL PRINCIPAL	PL	1	1	1	0
166	ASISTENT MEDICAL PRINCIPAL	PL	1	1	1	0
167	ASISTENT MEDICAL PRINCIPAL	PL	1	1	1	0
168	ASISTENT MEDICAL PRINCIPAL	PL	1	1	1	0
169	ASISTENT MEDICAL	PL	1	1	1	0
170	ASISTENT MEDICAL PRINCIPAL	PL	1	1	1	0
171	ASISTENT MEDICAL PRINCIPAL	PL	1	1	1	0
172	ASISTENT MEDICAL	PL	1	1	0	1
173	ASISTENT MEDICAL DEBUTANT	PL	1	1	0	1
174	ASISTENT MEDICAL DEBUTANT	PL	1	1	0	1
175	INFIRMIERA	M	1	1	1	0
176	INFIRMIERA	M	1	1	1	0
177	INFIRMIERA	M	1	1	1	0
178	INFIRMIERA	M	1	1	1	0
179	INFIRMIERA	M	1	1	1	0
180	INFIRMIERA	M	1	1	0	1
181	INFIRMIERA	M	1	1	0	1
182	INGRIJITOARE	G/M	1	1	1	0
183	INGRIJITOARE	G/M	1	1	1	0
184	INGRIJITOARE	G/M	1	1	1	0
185	INGRIJITOARE	G/M	1	1	1	0
186	INGRIJITOARE	G/M	1	1	0	1

**IX. SECTIA BOLI INFECTIOASE-25 paturi plus COMPARTIMENT DERMATOVENEROLOGIE 5 paturi-total 30 paturi**

			24	17	7	
187	MEDIC SEF SECTIE GR.I	S	1	1	1	0
188	MEDIC SPECIALIST	S	1	1	1	0
189	MEDIC SPECIALIST	S	1	1	1	0
190	ASISTENT MEDICAL PRINCIPAL SEF cu delegatie	PL	1	1	1	0
191	ASISTENT MEDICAL PRINCIPAL	PL	1	1	1	0
192	ASISTENT MEDICAL PRINCIPAL	PL	1	1	1	0
193	ASISTENT MEDICAL PRINCIPAL	PL	1	1	1	0
194	ASISTENT MEDICAL PRINCIPAL	PL	1	1	1	0
195	ASISTENT MEDICAL PRINCIPAL	PL	1	1	1	0
196	ASISTENT MEDICAL PRINCIPAL	PL	1	1	1	0
197	ASISTENT MEDICAL PRINCIPAL	PL	1	1	0	1
198	ASISTENT MEDICAL	PL	1	1	1	0

199	ASISTENT MEDICAL	PL	1	1	0	1
200	ASISTENT MEDICAL	PL	1	1	0	1
201	ASISTENT MEDICAL DEBUTANT	PL	1	1	0	1
202	INFIRMIERA	M	1	1	1	0
203	INFIRMIERA	M	1	1	1	0
204	INFIRMIERA	M	1	1	1	0
205	INFIRMIERA	M	1	1	1	0
206	INFIRMIERA	M	1	1	1	0
207	INFIRMIERA	M	1	1	1	0
208	INGRIJITOARE	G/M	1	1	0	1
209	INGRIJITOARE	G/M	1	1	0	1
210	INGRIJITOARE	G/M	1	1	0	1
<b>X. SECTIA NEUROLOGIE-25 paturi</b>						
			<b>28</b>	<b>17</b>	<b>11</b>	
211	MEDIC SEF SECTIE GR.I	S	1	1	1	0
212	MEDIC SPECIALIST	S	1	1	0	1
213	MEDIC REZIDENT	S	1	1	1	0
214	ASISTENT MEDICAL PRINCIPAL SEF cu delegatie	PL	1	1	1	0
215	ASISTENT MEDICAL PRINCIPAL	PL	1	1	1	0
216	ASISTENT MEDICAL PRINCIPAL	PL	1	1	1	0
217	ASISTENT MEDICAL PRINCIPAL	S	1	1	1	0
218	ASISTENT MEDICAL PRINCIPAL	PL	1	1	1	0
219	ASISTENT MEDICAL PRINCIPAL	PL	1	1	1	0
220	ASISTENT MEDICAL PRINCIPAL	PL	1	1	1	0
221	ASISTENT MEDICAL PRINCIPAL	PL	1	1	1	0
222	ASISTENT MEDICAL	PL	1	1	0	1
223	ASISTENT MEDICAL	PL	1	1	0	1
224	ASISTENT MEDICAL	PL	1	1	0	1
225	ASISTENT MEDICAL DEBUTANT	PL	1	1	0	1
226	INFIRMIERA	M	1	1	1	0
227	INFIRMIERA	M	1	1	1	0
228	INFIRMIERA	M	1	1	1	0
229	INFIRMIERA	M	1	1	1	0
230	INFIRMIERA	M	1	1	1	0
231	INFIRMIERA	M	1	1	0	1
232	INFIRMIERA	M	1	1	0	1
233	INFIRMIERA	M	1	1	0	1
234	INFIRMIERA	M	1	1	0	1
235	INFIRMIERA	M	1	1	0	1
236	INGRIJITOARE	G/M	1	1	1	0
237	INGRIJITOARE	G/M	1	1	1	0
238	INGRIJITOARE	G/M	1	1	0	1
<b>XI.SECTIA A.T.I.-15 paturi</b>						
			<b>38</b>	<b>22</b>	<b>16</b>	
<b>XI.1 TERAPIE INTENSIVA-6 paturi</b>			<b>21</b>	<b>11</b>	<b>10</b>	
239	MEDIC SEF SECTIE GR. I	S	1	1	0	1
240	MEDIC SPECIALIST sef sectie cu delegatie	S	1	1	1	0
241	MEDIC REZIDENT	S	1	1	1	0
242	ASISTENT MEDICAL PRINCIPAL SEF cu delegatie	S	1	1	1	0
243	ASISTENT MEDICAL PRINCIPAL	S	1	1	1	0
244	ASISTENT MEDICAL PRINCIPAL	PL	1	1	1	0
245	ASISTENT MEDICAL PRINCIPAL	PL	1	1	1	0
246	ASISTENT MEDICAL PRINCIPAL	PL	1	1	1	0
247	ASISTENT MEDICAL PRINCIPAL	PL	1	1	0	1
248	ASISTENT MEDICAL PRINCIPAL	PL	1	1	0	1
249	ASISTENT MEDICAL	PL	1	1	0	1
250	INFIRMIERA	M	1	1	1	0
251	INFIRMIERA	M	1	1	1	0
252	INFIRMIERA	M	1	1	1	0
253	INFIRMIERA	M	1	1	1	0

254	INFIRMIERA	M	1	1	0	1
255	INGRIJITOARE	G/M	1	1	0	1
256	INGRIJITOARE	G/M	1	1	0	1
257	BRANCARDIER	G/M	1	1	0	1
258	BRANCARDIER	G/M	1	1	0	1
259	BRANCARDIER	G/M	1	1	0	1
<b>XI.2 TERAPIE INTENSIVA INGRIJIRE POSTOPERATORIE-9 paturi</b>						
				16	11	5
260	MEDIC REZIDENT	S	1	1	1	0
261	MEDIC REZIDENT	S	1	1	1	0
262	MEDIC REZIDENT	S	1	1	1	0
263	ASISTENT MEDICAL PRINCIPAL	PL	1	1	1	0
264	ASISTENT MEDICAL PRINCIPAL	S	1	1	1	0
265	ASISTENT MEDICAL PRINCIPAL	S	1	1	1	0
266	ASISTENT MEDICAL PRINCIPAL	PL	1	1	1	0
267	ASISTENT MEDICAL PRINCIPAL	S	1	1	1	0
268	ASISTENT MEDICAL PRINCIPAL	PL	1	1	0	1
269	ASISTENT MEDICAL	PL	1	1	0	1
270	ASISTENT MEDICAL	PL	1	1	0	1
271	INFIRMIERA	M	1	1	1	0
272	INFIRMIERA	M	1	1	1	0
273	INFIRMIERA	M	1	1	1	0
274	INFIRMIERA	M	1	1	0	1
275	INGRIJITOARE	G/M	1	1	0	1
<b>XI.3 UNITATE DE TRANSFUZII DE SANGE-POST FIX</b>						
				1	0	1
276	ASISTENT MEDICAL	PL	1	1	0	1
<b>XII.COMPARTIMENT PSIHIATRIE-18 paturi</b>						
				17	15	2
277	MEDIC PRIMAR	S	1	1	1	0
278	MEDIC SPECIALIST	S	1	1	0	1
279	MEDIC REZIDENT	S	1	1	1	0
280	ASISTENT MEDICAL PRINCIPAL	PL	1	1	1	0
281	ASISTENT MEDICAL PRINCIPAL	PL	1	1	1	0
282	ASISTENT MEDICAL PRINCIPAL	PL	1	1	1	0
283	ASISTENT MEDICAL PRINCIPAL	S	1	1	1	0
284	ASISTENT MEDICAL PRINCIPAL	PL	1	1	1	0
285	ASISTENT MEDICAL	PL	1	1	1	0
286	INFIRMIERA	M	1	1	1	0
287	INFIRMIERA*	M	1	1	0	1
288	INFIRMIERA	M	1	1	1	0
289	INFIRMIERA	M	1	1	1	0
290	INFIRMIERA	M	1	1	1	0
291	INGRIJITOARE	G/M	1	1	1	0
292	INGRIJITOARE	G/M	1	1	1	0
293	BRANCARDIER	G/M	1	1	1	0
<b>XIII COMPARTIMENT PNEUMOLOGIE -10 paturi</b>						
				12	2	10
294	MEDIC PRIMAR		1	1	0	1
295	ASISTENT MEDICAL PRINCIPAL	S	1	1	0	1
296	ASISTENT MEDICAL PRINCIPAL	PL	1	1	0	1
297	ASISTENT MEDICAL	PL	1	1	0	1
298	ASISTENT MEDICAL	PL	1	1	0	1
299	ASISTENT MEDICAL	PL	1	1	0	1
300	INFIRMIERA	M	1	1	1	0
301	INFIRMIERA	M	1	1	0	1
302	INFIRMIERA	M	1	1	0	1
303	INFIRMIERA	M	1	1	0	1
304	INFIRMIERA	M	1	1	0	1
305	INGRIJITOARE	G/M	1	1	1	0

XIV.COMPARTIMENT PRIMIRI URGENTE-POSTURI FIXE				42	21	21
306	MEDIC SPECIALIST SEF CPU GRADUL I	S	1	1	0	1
307	MEDIC SPECIALIST	S	1	1	1	0
308	MEDIC SPECIALIST	S	1	1	0	1
309	MEDIC SPECIALIST sef CPU cu delegatie	S	1	1	1	0
310	MEDIC SPECIALIST	S	1	1	0	1
311	MEDIC SPECIALIST	S	1	1	0	1
312	ASISTENT SOCIAL	PL	1	1	1	0
313	ASISTENT MEDICAL PRINCIPAL	PL	1	1	1	0
314	ASISTENT MEDICAL PRINCIPAL	S	1	1	1	0
315	ASISTENT MEDICAL PRINCIPAL	PL	1	1	1	0
316	ASISTENT MEDICAL PRINCIPAL	PL	1	1	0	1
317	ASISTENT MEDICAL PRINCIPAL	PL	1	1	0	1
318	ASISTENT MEDICAL	PL	1	1	1	0
319	ASISTENT MEDICAL	PL	1	1	1	0
320	ASISTENT MEDICAL	PL	1	1	1	0
321	ASISTENT MEDICAL	PL	1	1	1	0
322	ASISTENT MEDICAL	PL	1	1	0	1
323	ASISTENT MEDICAL	PL	1	1	0	1
324	ASISTENT MEDICAL	PL	1	1	0	1
325	ASISTENT MEDICAL	PL	1	1	0	1
326	ASISTENT MEDICAL DEBUTANT	PL	1	1	0	1
327	ASISTENT MEDICAL DEBUTANT	PL	1	1	0	1
328	REGISTRATOR MEDICAL PRINCIPAL	M	1	1	1	0
329	REGISTRATOR MEDICAL	M	1	1	1	0
330	REGISTRATOR MEDICAL PRINCIPAL	M	1	1	0	1
331	REGISTRATOR MEDICAL	M	1	1	1	0
332	REGISTRATOR MEDICAL	M	1	1	1	0
333	INFIRMIERA	G/M	1	1	0	1
334	INFIRMIERA	G/M	1	1	0	1
335	INFIRMIERA	G/M	1	1	0	1
336	INFIRMIERA	G/M	1	1	0	1
337	INFIRMIERA	G/M	1	1	0	1
338	INGRIJITOARE	G	1	1	1	0
339	INGRIJITOARE	G	1	1	1	0
340	INGRIJITOARE	G	1	1	0	1
341	INGRIJITOARE	G	1	1	0	1
342	INGRIJITOARE	G	1	1	0	1
343	BRANCARDIER	G	1	1	1	0
344	BRANCARDIER	G	1	1	1	0
345	BRANCARDIER	G	1	1	1	0
346	BRANCARDIER	G	1	1	1	0
347	BRANCARDIER	G	1	1	1	0
<b>XV. STERILIZARE-POSTURI FIXE</b>				<b>6</b>	<b>5</b>	<b>1</b>
348	ASISTENT MEDICAL PRINCIPAL SEF cu delegatie	PL	1	1	1	0
349	ASISTENT MEDICAL PRINCIPAL	PL	1	1	1	0
350	ASISTENT MEDICAL PRINCIPAL	PL	1	1	1	0
351	ASISTENT MEDICAL	PL	1	1	1	0
352	ASISTENT MEDICAL	PL	1	1	1	0
353	INGRIJITOARE	G	1	1	0	1
<b>XVI. BLOC OPERATOR -POSTURI FIXE</b>				<b>15</b>	<b>10</b>	<b>5</b>
354	MEDIC SPECIALIST	S	1	1	1	0
355	ASISTENT MEDICAL PRINCIPAL SEF cu delegatie	PL	1	1	1	0
356	ASISTENT MEDICAL PRINCIPAL	PL	1	1	1	0
357	ASISTENT MEDICAL PRINCIPAL	PL	1	1	1	0
358	ASISTENT MEDICAL PRINCIPAL	PL	1	1	1	0
359	ASISTENT MEDICAL PRINCIPAL	PL	1	1	1	0



360	INFIRMIERA	M	1	1	0	1
361	INFIRMIERA	M	1	1	0	1
362	INFIRMIERA	M	1	1	0	1
363	INGRIJITOARE	G	1	1	1	0
364	INGRIJITOARE	G	1	1	1	0
365	INGRIJITOARE	G	1	1	0	1
366	BRANCARDIER	G	1	1	1	0
367	BRANCARDIER	G	1	1	1	0
368	BRANCARDIER	G	1	1	0	1
<b>XVII.FARMACIA CU CIRCUIT INCHIS</b>			<b>11</b>	<b>7</b>	<b>4</b>	
369	FARMACIST SEF GR. II	S	1	1	0	1
370	FARMACIST SPECIALIST	S	1	1	1	0
371	ASISTENT MEDICAL *	PL	1	1	0	1
372	ASISTENT MEDICAL PRINCIPAL	PL	1	1	1	0
373	ASISTENT MEDICAL PRINCIPAL	PL	1	1	1	0
374	ASISTENT MEDICAL PRINCIPAL	PL	1	1	1	0
375	ASISTENT MEDICAL	PL	1	1	0	1
376	ECONOMIST GR.I	S	1	1	1	0
377	OPERATOR CONTROLOR DATE II	M	1	1	0	1
378	INGRIJITOARE	G	1	1	1	0
379	INGRIJITOARE	G	1	1	1	0
<b>XVIII.LABORATOR ANALIZE MEDICALE CU PUNCT DE LUCRU IN AMBULATORIUL INTEGRAT-POSTURI FIXE</b>			<b>21</b>	<b>16</b>	<b>5</b>	
380	MEDIC SPECIALIST SEF LABORATOR GR.II	S	1	1	0	1
381	MEDIC REZIDENT	S	1	1	1	0
382	CHIMIST PRINCIPAL SEF LABORATOR GR.II cu deleg	S	1	1	1	0
383	BIOLOG PRINCIPAL	S	1	1	1	0
384	CHIMIST SPECIALIST	S	1	1	1	0
385	BIOLOG	S	1	1	1	0
386	BIOLOG DEBUTANT	S	1	1	1	0
387	ASISTENT MEDICAL PRINCIPAL SEF cu delegatie	PL	1	1	1	0
388	ASISTENT MEDICAL PRINCIPAL	PL	1	1	1	0
389	ASISTENT MEDICAL PRINCIPAL	PL	1	1	1	0
390	ASISTENT MEDICAL PRINCIPAL	PL	1	1	1	0
391	ASISTENT MEDICAL PRINCIPAL	PL	1	1	0	1
392	ASISTENT MEDICAL PRINCIPAL	PL	1	1	1	0
393	ASISTENT MEDICAL	PL	1	1	1	0
394	ASISTENT MEDICAL	PL	1	1	0	1
395	ASISTENT MEDICAL	PL	1	1	0	1
396	ASISTENT MEDICAL DEBUTANT	PL	1	1	1	0
397	REGISTRATOR MEDICAL PRINCIPAL	M	1	1	1	0
398	INGRIJITOR	G	1	1	1	0
399	INGRIJITOR	G	1	1	1	0
400	INGRIJITOR	G	1	1	0	1
<b>XIX. LABORATOR RADIOLOGIE SI IMAGISTICA MEDICALA CU PUNCT DE LUCRU IN AMBULATORIU INTEGRAT-POSTURI FIXE</b>			<b>13</b>	<b>9</b>	<b>4</b>	
401	MEDIC SEF LABORATOR GR.I	S	1	1	1	0
402	MEDIC SPECIALIST	S	1	1	1	0
403	MEDIC REZIDENT	S	1	1	1	0
404	ASISTENT MEDICAL PRINCIPAL SEF cu delegatie	PL	1	1	1	0
405	ASISTENT MEDICAL PRINCIPAL	PL	1	1	1	0
406	ASISTENT MEDICAL PRINCIPAL	PL	1	1	1	0
407	ASISTENT MEDICAL	PL	1	1	1	0
408	ASISTENT MEDICAL	PL	1	1	0	1
409	ASISTENT MEDICAL DEBUTANT	PL	1	1	0	1
410	SORA MEDICALA PRINCIPALA	M	1	1	1	0
411	INGRIJITOR	G	1	1	1	0

412	INGRIJITOR	G	1	1	0	1
413	INGRIJITOR	G	1	1	0	1
<b>XX. SERVICIU ANATOMIE PATOLOGICA CU COMPARTIMENT CITOLOGIE, HISTOPATOLOGIE ,PROSECTURA</b>						
			<b>7</b>	<b>3</b>	<b>4</b>	
414	MEDIC PRIMAR	S	1	1	1	0
415	MEDIC PRIMAR	S	1	1	0	1
416	BIOCHIMIST	S	1	1	0	1
417	SORA MEDICALA PRINCIPALA	M	1	1	1	0
418	SORA MEDICALA PRINCIPALA	M	1	1	0	1
419	ASISTENT MEDICAL PRINCIPAL	PL	1	1	0	1
420	AUTOPSIER	G	1	1	1	0
<b>XXI. LABORATOR EXPLORARI FUNCTIONALE-POST FIX</b>						
			<b>1</b>	<b>0</b>	<b>1</b>	
421	ASISTENT MEDICAL	PL	1	1	0	1
<b>XXII. COMPARTIMENT DE PREVENIRE SI CONTROL AL INFECTIILOR NOSOCOMIALE</b>						
			<b>3</b>	<b>2</b>	<b>1</b>	
422	MEDIC PRIMAR	S	1	1	0	1
423	ASISTENT MEDICAL PRINCIPAL	PL	1	1	1	0
424	INFIRMIER/AGENT DDD	G	1	1	1	0
<b>XXIII. COMPARTIMENT DE EVALUARE SI STATISTICA MEDICALA-POSTURI FIXE</b>						
			<b>4</b>	<b>3</b>	<b>1</b>	
425	BIOINGINER MEDICAL SP	S	1	1	1	0
426	BIOINGINER MEDICAL SPECIALIST	S	1	1	1	0
427	ASISTENT MEDICAL PRINCIPAL	PL	1	1	1	0
428	ASISTENT MEDICAL	PL	1	1	0	1
<b>XXIV.CABINET DIABET ZAHARAT,NUTRITIE SI BOLI METABOLICE-POSTURI FIXE</b>						
			<b>4</b>	<b>2</b>	<b>2</b>	
429	MEDIC SPECIALIST	S	1	1	1	0
430	MEDIC SPECIALIST	S	1	1	0	1
431	ASISTENT MEDICAL PRINCIPAL	PL	1	1	1	0
432	ASISTENT MEDICAL PRINCIPAL	PL	1	1	0	1
<b>XXV. CABINET PLANIFICARE FAMILIALA-POSTURI FIXE</b>						
			<b>2</b>	<b>1</b>	<b>1</b>	
433	MEDIC PRIMAR	S	1	1	1	0
434	ASISTENT MEDICAL	PL	1	1	0	1
<b>XXVI.DISPENSAR T.B.C.</b>						
			<b>6</b>	<b>5</b>	<b>1</b>	
435	MEDIC PRIMAR	S	1	1	0	1
436	MEDIC PRIMAR	S	1	1	1	0
437	ASISTENT MEDICAL	S	1	1	1	0
438	ASISTENT MEDICAL PRINCIPAL	PL	1	1	1	0
439	ASISTENT MEDICAL PRINCIPAL	PL	1	1	1	0
440	INGRIJITOR	G	1	1	1	0
<b>XXVII .BUCATARIE DIETETICA-POSTURI FIXE</b>						
			<b>2</b>	<b>1</b>	<b>1</b>	
441	ASISTENT MEDICAL PRINCIPAL	PL	1	1	1	0
442	ASISTENT MEDICAL PRINCIPAL	PL	1	1	0	1
<b>XXVIII. SPALATORIE</b>						
			<b>6</b>	<b>3</b>	<b>3</b>	
443	SPALATOREASA CU GESTIUNE	M	1	1	1	0
444	SPALATOREASA	M	1	1	1	0
445	SPALATOREASA	M	1	1	1	0
446	SPALATOREASA	M	1	1	0	1
447	SPALATOREASA	M	1	1	0	1
448	SPALATOREASA	M	1	1	0	1
<b>XXIX. MUNCITORI</b>						
			<b>41</b>	<b>33</b>	<b>8</b>	
<b>XXIX.1MUNCITORI INTRETINERE CLADIRI,INSTALATII DE APA</b>						

<b>LUMINA SI INCALZIRE</b>				<b>7</b>	<b>7</b>	<b>0</b>
	TAMPLAR					
449	MUNCITOR CALIFICAT TR. IV	G	1	1	1	0
	ELECTRICIAN DE INTRETINERE SI REPARATII					
450	MUNCITOR CALIFICAT TR.III	G	1	1	1	0
451	MUNCITOR CALIFICAT TR.III	G	1	1	1	0
	ZIDAR					
452	MUNCITOR CALIFICAT TR. III	G	1	1	1	0
	SUDOR					
453	MUNCITOR CALIFICAT TR. III	G	1	1	1	0
	INSTALATII DE APA SI CANAL					
454	MUNCITOR CALIFICAT TR.III	G	1	1	1	0
455	MUNCITOR CALIFICAT TR.IV		1	1	1	0
<b>XXIX.2MUNCITORI BLOC ALIMENTAR</b>				<b>8</b>	<b>7</b>	<b>1</b>
	BUCATAR					
456	MUNCITOR CALIFICAT TR. IV	M	1	1	1	0
457	MUNCITOR CALIFICAT TR. IV	M	1	1	1	0
	MUNCITOR NECALIFICAT TR.I					
458	MUNCITOR NECALIFICAT TR.I	G	1	1	1	0
459	MUNCITOR NECALIFICAT TR.I	G	1	1	1	0
460	MUNCITOR NECALIFICAT TR.I	G	1	1	1	0
461	MUNCITOR NECALIFICAT TR.I	G	1	1	1	0
462	MUNCITOR NECALIFICAT TR.I	G	1	1	1	0
463	MUNCITOR NECALIFICAT TR.I	G	1	1	0	1
<b>XXIX.3MUNCITORI CARE DESERVESC CENTRALA TERMICA-POSTURI FIXE</b>				<b>5</b>	<b>5</b>	<b>0</b>
464	MUNCITOR CALIFICAT TR. I	G	1	1	1	0
465	MUNCITOR CALIFICAT TR. II	G	1	1	1	0
466	MUNCITOR CALIFICAT TR. I	G	1	1	1	0
467	MUNCITOR CALIFICAT TR. IV	G	1	1	1	0
468	MUNCITOR CALIFICAT TR. III	G	1	1	1	0
<b>XXIX.4 MUNCITORI CARE DESERVESC STATIA CENTRALA DE OXIGEN-POSTURI FIXE</b>				<b>5</b>	<b>2</b>	<b>3</b>
469	MUNCITOR CALIFICAT TR. IV	G	1	1	1	0
470	MUNCITOR CALIFICAT TR. IV	G	1	1	1	0
471	MUNCITOR CALIFICAT TR. IV	G	1	1	0	1
472	MUNCITOR CALIFICAT TR. IV	G	1	1	0	1
473	MUNCITOR CALIFICAT TR. IV	G	1	1	0	1
<b>XXIX.5MUNCITORI CARE DESERVESC LIFTUL CU INSOTITOR-POSTURI FIXE</b>				<b>5</b>	<b>5</b>	<b>0</b>
474	MUNCITOR CALIFICAT TR. IV	G	1	1	1	0
475	MUNCITOR CALIFICAT TR. IV	G	1	1	1	0
476	MUNCITOR CALIFICAT TR. IV	G	1	1	1	0
477	MUNCITOR CALIFICAT TR. IV	G	1	1	1	0
478	MUNCITOR CALIFICAT TR. IV	G	1	1	1	0
<b>XXIX.6MUNCITORI CARE DESERVESC CENTRALA TELEFONICA-POSTURI FIXE</b>				<b>2</b>	<b>1</b>	<b>1</b>
479	MUNCITOR CALIFICAT TR. III	M	1	1	1	0
480	MUNCITOR CALIFICAT TR. III	M	1	1	0	1
<b>XXIX.7 ACTIVITATEA DE CONDUCERE AUTO</b>				<b>2</b>	<b>2</b>	<b>0</b>
481	SOFER TR. II	G	1	1	1	0
482	SOFER TR. II	G	1	1	1	0
<b>XXIX.8 FRIZER</b>				<b>1</b>	<b>0</b>	<b>1</b>
483	MUNCITOR CALIFICAT TR. IV	G	1	1	0	1
<b>XXIX.9 INTRETINERE INVENTAR MOALE</b>				<b>1</b>	<b>1</b>	<b>0</b>

484	MUNCITOR CALIFICAT TR. IV	G	1	1	1	0
<b>XXIX.10 INTRETINERE SPATII VERZI</b>						
				1	1	0
485	MUNCITOR NECALIFICAT TR.I	G	1	1	1	0
<b>XXIX.11 APROVIZIONARE,MANIPULARE ,DEPOZITARE SI DESERVIRE MIJLOACE DE TRANSPORT</b>						
				1	1	0
486	MUNCITOR NECALIFICAT TR.I	G	1	1	1	0
<b>XXIX.12 DESERVIRE GRUP ELECTROGEN</b>						
	ELECTRICIAN			2	0	2
487	MUNCITOR CALIFICAT TR. IV	G	1	1	0	1
488	MUNCITOR CALIFICAT TR. IV	G	1	1	0	1
<b>XXIX.13 MUNCITORI CARE DESERVESC STATIA DE POMPE</b>						
				1	1	0
489	MUNCITOR CALIFICAT TR. IV	G	1	1	1	0
<b>XXX . PERSONAL CLERICAL</b>						
				0.5	0	0.5
490	PREOT GR.II	S	0.5	0.5	0	0.5
<b>XXXI. PERSONAL T.E.S.A.</b>						
				15	11	4
<b>XXX.1 COMPARTIMENT RUNOS</b>						
				3	2	1
491	INSPECTOR DE SPECIALITATE GR I	S	1	1	1	0
492	ECONOMICT GR I*	S	1	1	0	1
493	REFERENT IA	M	1	1	1	0
<b>XXXI.2 COMPARTIMENT FINANCIAR CONTABIL</b>						
				3	2	1
494	ECONOMIST GR I	S	1	1	0	1
495	ECONOMIST GR.I	S	1	1	1	0
496	ECONOMIST GR.I	S	1	1	1	0
<b>XXXI.3 COMPARTIMENT ACHIZITII PUBLICE,CONTRACTARE</b>						
				1	1	0
497	ECONOMIST IA	S	1	1	1	0
<b>XXXI.4 BIROU ADMINISTRATIV APROVIZIONARE TRANSPORT TEHNIC</b>						
				6	5	1
498	INGINER IA SEF BIROU GRADUL II	S	1	1	1	0
499	ECONOMIST IA	S	1	1	1	0
500	ECONOMIST II	S	1	1	1	0
501	ECONOMIST DEBUTANT	S	1	1	1	0
502	MAGAZINER TR. I	M	1	1	1	0
503	INGINER IA- TEHNIC	S	1	1	0	1
<b>XXXI.5 COMPARTIMENT SANATATE SI SEC. A MUNCII ,PSI,PROTECTIE CIVILA SI SITUATII DE URGENTA</b>						
				1	1	0
504	INGINER IA	S	1	1	1	0
<b>XXXI.6 COMPARTIMENT JURIDIC</b>						
				1	0	1
505	CONSILIER JURIDIC GRADUL II	S	1	1	0	1
<b>XXXII. AMBULATORIUL INTEGRAT CU CABINETE IN SPECIALITATE</b>						
				28	15	13
<b>XXXII.1 CABINET MEDICINA INTERNA</b>						
506	ASISTENT MEDICAL PRINCIPAL	PL	1	1	0	1
<b>XXXII.2 CABINET O.R.L.</b>						
507	MEDIC REZIDENT	S	1	1	1	0
508	ASISTENT MEDICAL	PL	1	1	0	1
<b>XXXII.3CABINET OFTALMOLOGIE</b>						
509	MEDIC PRIMAR	S	1	1	1	0
510	MEDIC REZIDENT	S	1	1	1	0
511	ASISTENT MEDICAL PRINCIPAL	PL	1	1	1	0
<b>XXXII.4 CABINET CHIRURGIE GENERALA</b>						
512	ASISTENT MEDICAL PRINCIPAL	PL	1	1	1	0

<b>XXXII.5 CABINET OBSTETRICA GINECOLOGIE</b>						
513	ASISTENT MEDICAL PRINCIPAL	PL	1	1	1	0
<b>XXXII.6 CABINET PEDIATRIE</b>						
514	ASISTENT MEDICAL PRINCIPAL	PL	1	1	1	0
<b>XXXII.7 CABINET NEUROLOGIE</b>						
515	ASISTENT MEDICAL	PL	1	1	0	1
<b>XXXII.8 CABINET DERMATOVENEROLOGIE</b>						
516	ASISTENT MEDICAL	PL	1	1	0	1
<b>XXXII.9 CABINET ENDOCRINOLOGIE</b>						
517	MEDIC SPECIALIST	S	1	1	1	0
518	ASISTENT MEDICAL	PL	1	1	0	1
<b>XXXII.10 CABINET PSIHIATRIE</b>						
519	ASISTENT MEDICAL PRINCIPAL	PL	1	1	0	1
<b>XXXII.11 CABINET RECUPERARE , MEDICINA FIZICA SI BALNEOLOGIE</b>						
520	MEDIC REZIDENT	S	1	1	1	0
521	MEDIC REZIDENT	S	1	1	1	0
522	ASISTENT MEDICAL PRINCIPAL	PL	1	1	1	0
523	ASISTENT MEDICAL PRINCIPAL	PL	1	1	1	0
<b>XXXII.12 CABINET CARDIOLOGIE</b>						
524	ASISTENT MEDICAL	PL	1	1	0	1
<b>XXXII.13 CABINET ORTOPEDIE SI TRAUMATOLOGIE</b>						
525	ASISTENT MEDICAL	PL	1	1	0	1
<b>XXXII.14 CABINET STOMATOLOGIE</b>						
526	MEDIC DENTIST	S	1	1	0	1
527	MEDIC DENTIST	S	1	1	1	0
528	ASISTENT MEDICAL	PL	1	1	0	1
<b>XXXII.15 SALA DE TRATAMENT</b>						
529	ASISTENT MEDICAL	PL	1	1	0	1
<b>XXXII.16 COMPARTIMENT STATISTICA MEDICALA</b>						
530	REGISTRATOR MEDICAL PRINCIPAL	PL	1	1	1	0
<b>XXXII.17 PERSONAL DE CURATENIE</b>						
531	INGRIJITOR	G	1	1	1	0
532	INGRIJITOR	G	1	1	0	1
533	INGRIJITOR	G	1	1	0	1
<b>TOTAL</b>			<b>532.5</b>	<b>352</b>	<b>180.5</b>	

Pentru posturile marcate cu \* s-a demarat procedura de concurs ,in vederea ocuparii lor .

Presedinte de sedinta,  
Hoha Gheorghe

Secretarul Municipiului Husi,  
jr.Monica Dumitrascu

