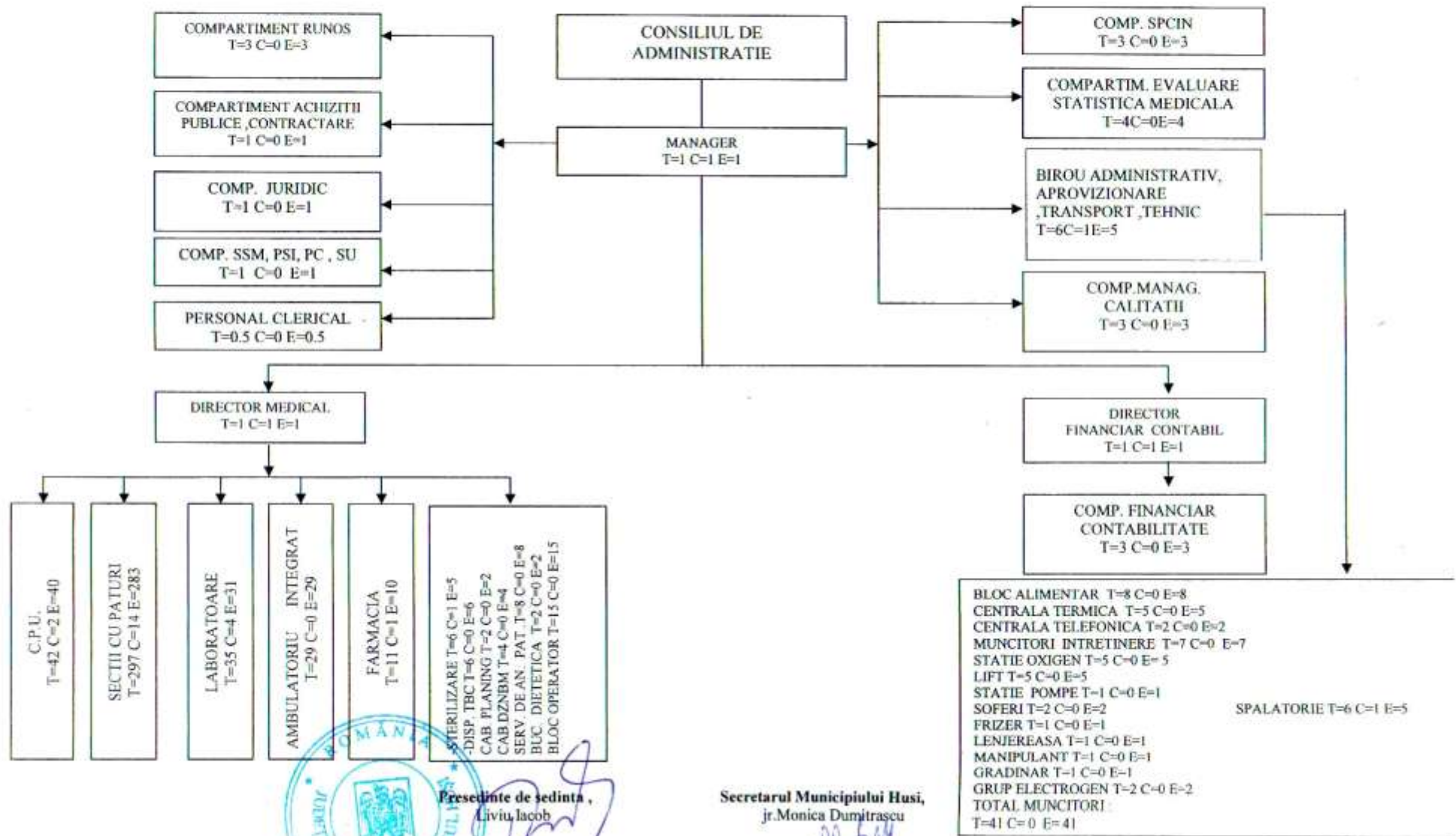


ANEXA NR. 1

ORGANIGRAMA SPITALULUI MUNICIPAL „DIMITRIE CASTROIAN” HUSI-01.01.2014
 TOTAL POSTURI=532.5; DIN CARE POSTURI CONDUCERE=27; TOTAL POSTURI EXECUTIE=505.5




 Presedinte de sedinta,
 Liviu Iacob

Secretarul Municipiului Husi,
 jr. Monica Dumitrascu

Anexa nr.2

Numar de posturi desfiintate	Pozitia postului idesfiintat in statul de functii aprobat prin Hotararea Consiliului Local nr.77/25.04.2013
1	Medic specialist-cabinet cardiologie-pozitia 36
2	Medic specialist-cabinet medicina interna-pozitia 33
3	Medic specialist-cabinet pediatrie-pozitia 77
4	Medic specialist-cabinet chirurgie generala-pozitia 174
5	Medic specialist-cabinet dermatovenerologie-pozitia 313
6	Medic specialist-cabinet ORL-pozitia 539
Total posturi de medic desfiintate=6 posturi	
1	Asistent medical PL-cabinet medicina interna-pozitia nr. 538
1	Asistent medical PL-cabinet ORL-pozitia nr. 542
1	Asistent medical PL-cabinet oftalmologie -pozitia nr. 546
1	Asistent medical PL-cabinet chirurgie generala-pozitia nr. 548
1	Asistent medical PL-cabinet obstetrica ginecologie-pozitia nr. 550
1	Asistent medical PL-cabinet pediatrie-pozitia nr. 552
1	Asistent medical principal PL-cabinet dermatovenerologie-pozitia nr. 555
1	Asistent medical PL-cabinet psihiatrie-pozitia nr. 559
1	Asistent medical PL-cabinet ortopedie si traumatologie-pozitia nr. 566
1	Asistent medical PL-cabinet medicina dentara-pozitia nr. 570
1	Asistent medical debutant PL -post fix ATI-compartiment Pediatrie-pozitia 92
1	Asistent medical PL -sectia Obstetrica Ginecologie-pozitia 116
1	Asistent medical PL-post fix Sala de Nasteri-pozitia 138
1	Asistent medical PL-post fix Sala de Operatii-OG -pozitia 143
1	Asistent medical principal PL-farmacie-pozitia nr. 399
1	Asistent medical PL-post fix laborator analize medicale-pozitia 420
1	Asistent medical PL-post fix laborator analize medicale-pozitia 421
Total posturi de asistent medical desfiintate=17 posturi	
1	Infirmiera compartiment cardiologie-pozitia 45
5	Infirmiera compartiment pneumologie-pozitia 323,324,325,326,327
2	Infirmiera-sala de operatii-OG-pozitia 145,146
1	Infirmiera sectia chirurgie generala-pozitia 196
1	Infirmiera compartiment ortopedie si traumatologie -pozitia 207
1	Infirmiera compartiment dermatovenerologie-pozitia 316
3	Infirmiera sectia ATI-TI si TIIP-pozitia 273,291,292
Total posturi de infirmiera desfiintate=14 posturi	
3	Muncitor calificat tr. III-telefonist-pozitia 506,507,508
3	Muncitor calificat tr. IV -electrician-pozitia 517,518,519
Total posturi de muncitori desfiintate=6 posturi	



Președinte de sedinta ,
Liviu Iacob


Secretarul Municipiului Husi,
jr.Monica Dumitrascu

Anexa nr.3

<i>Nr. functii desfiintate</i>	<i>Pozitia functiei-a postului de conducere in statul de functii aprobat prin Hotararea Consiliului Local nr.77/25.04.2013</i>	<i>Pozitia postului de executie in statul de functii propus spre aprobare</i>
1	Medic sef birou gradul II-pozitia 4	Medic specialist-pozitia 4
2	Bioinginer medical sef gradul II-pozitia 451	Bioinginer medical specialist –pozitia 424
3	Sef birou gradul II –pozitia 522	Inspector de specialitate gradul I-pozitia 490
4	Sef birou gradul II –pozitia 525	Economist gradul I -pozitia 493
5	Sef birou gradul II –pozitia 528	Economist IA-pozitia 496
6	Sef serviciu gradul II –pozitia 531	Sef birou –pozitia 497


Presedinte de sedinta ,
Liviu Iacob

Secretarul Municipiului Husi,
jr.Monica Dumitrascu



Anexa nr.4

<i>Nr posturi transfor mate</i>	<i>Pozitia postului in statul de functii aprobat prin Hotararea Consiliului Local nr.77/25.04.2013</i>	<i>Pozitia postului in statul de functii propus spre aprobare</i>
1	Medic primar –pozitia 150	Medic rezident-pozitia 143
2	Medic specialist-pozitia 278	Medic rezident -pozitia 272
3	Medic primar-pozitia 102	Medic rezident –pozitia 105


Presedinte de sedinta ,
Liviu Iacob

Secretarul Municipiului Husi,
jr.Monica Dumitrascu



Anexa nr.5

<i>Nr. posturi transformate</i>	<i>Pozitia postului in statul de functii aprobat prin Hotararea Consiliului Local nr.77/25.04.2013</i>	<i>Pozitia postului in statul de functii propus spre aprobare</i>
1	Medic rezident-pozitia 10	Medic specialist-pozitia 10
2	Medic rezident-pozitia 11	Medic specialist-pozitia 11
3	Medic rezident-pozitia 204	Medic specialist-pozitia 168
4	Medic rezident-pozitia 334	Medic specialist-pozitia 305
5	Farmacist rezident-pozitia 394	Farmacist specialist-pozitia 368
6	Medic rezident-pozitia 427	Medic specialist-pozitia 400
7	Medic rezident-pozitia 455	Medic specialist-pozitia 428
8	Medic rezident-pozitia 556	Medic specialist-pozitia 516

**Președinte de sedinta ,**
Liviu Iacob

Secretarul Municipiului Husi,
jr.Monica Dumitrascu

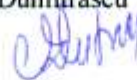


Anexa nr.6

<i>Nr posturi trans formate</i>	<i>Pozitia postului in statul de functii aprobat prin Hotararea Consiliului Local nr.77/25.04.2013</i>	<i>Pozitia postului in statul de functii propus spre aprobare</i>
1	Asistent medical PL-pozitia 183	Asistent medical principal PL-pozitia 176
2	Asistent medical PL-pozitia 185	Asistent medical principal PL-pozitia 178
3	Asistent medical PL-pozitia 186	Asistent medical principal PL-pozitia 179
4	Asistent medical PL-pozitia 218	Asistent medical principal PL-pozitia 206
5	Asistent medical PL-pozitia 302	Asistent medical principal PL-pozitia 294
6	Asistent medical PL-pozitia 431	Asistent medical principal PL-pozitia 404


Presedinte de sedinta ,
Liviu Iacob

Secretarul Municipiului Husi,
jr.Monica Dumitrascu



Anexa nr.7

<i>Nr. posturi transformate</i>	<i>Pozitia postului in statul de functii aprobat prin Hotararea Consiliului Local nr.77/25.04.2013</i>	<i>Pozitia postului in statul de functii propus spre aprobare</i>
1	Referent IA – M -pozitia 529	Economist debutant - S -pozitia 500
2	Asistent medical principal PL-pozitia 415	Biolog debutant –S - pozitia 384
3	Asistent medical principal PL-pozitia 301	Asistent medical principal S-pozitia 293
4	Asistent medical principal PL-pozitia 337	Asistent medical principal S-pozitia 312

**Președinte de sedinta ,**
Livia Iacob

Secretarul Municipiului Husi,
jr. Monica Dumitrascu



STAT DE FUNCTII
pentru Spitalul Municipal "Dimitrie Costoian" Husi

Nr. crt.	COMPARTIMENT/FUNCTIE	Nivel de studii	Cuantum post	Posturi normate	Posturi ocupate	Posturi vacante
I.COMITET DIRECTOR						
				3	3	0
1	MANAGER, GR. II	S	1	1	1	0
2	DIRECTOR MEDICAL GR. II	S	1	1	1	0
3	DIRECTOR FINANCIAR CONTABIL, GR. II	S	1	1	1	0
II. COMPARTIMENT MANAGEMENT AL CALITATII-POSTURI FIXE						
				3	0	3
4	MEDIC SPECIALIST	S	1	1	0	1
5	ASISTENT MEDICAL PL	PL	1	1	0	1
6	ECONOMIST GR.II	S	1	1	0	1
III.SECTIA MEDICINA INTERNA-50 paturi din care 20 paturi COMPARTIMENT CARDIOLOGIE plus COMPARTIMENT PNEUMOLOGIE 10 paturi ; total 60 paturi						
				48	30	18
7	MEDIC SEF SECTIE , GR.I	S	1	1	0	1
8	MEDIC PRIMAR sef sectie cu delegatie	S	1	1	1	0
9	MEDIC REZIDENT	S	1	1	1	0
10	MEDIC SPECIALIST	S	1	1	1	0
11	MEDIC SPECIALIST	S	1	1	1	0
12	MEDIC REZIDENT	S	1	1	1	0
13	MEDIC REZIDENT	S	1	1	1	0
14	MEDIC PRIMAR	S	1	1	0	1
15	ASISTENT MEDICAL PRINCIPAL SEF cu delegatie	PL	1	1	1	0
16	ASISTENT MEDICAL PRINCIPAL	PL	1	1	1	0
17	ASISTENT MEDICAL PRINCIPAL	PL	1	1	1	0
18	ASISTENT MEDICAL PRINCIPAL	PL	1	1	1	0
19	ASISTENT MEDICAL PRINCIPAL	PL	1	1	1	0
20	ASISTENT MEDICAL PRINCIPAL	PL	1	1	1	0
21	ASISTENT MEDICAL PRINCIPAL	PL	1	1	1	0
22	ASISTENT MEDICAL PRINCIPAL	PL	1	1	1	0
23	ASISTENT MEDICAL PRINCIPAL	S	1	1	1	0
24	ASISTENT MEDICAL PRINCIPAL	PL	1	1	0	1
25	ASISTENT MEDICAL PRINCIPAL	PL	1	1	0	1
26	ASISTENT MEDICAL PRINCIPAL	PL	1	1	0	1
27	ASISTENT MEDICAL	PL	1	1	1	0
28	ASISTENT MEDICAL	PL	1	1	1	0
29	ASISTENT MEDICAL	PL	1	1	0	1
30	ASISTENT MEDICAL	PL	1	1	0	1
31	ASISTENT MEDICAL	PL	1	1	0	1
32	ASISTENT MEDICAL	PL	1	1	0	1
33	ASISTENT MEDICAL	PL	1	1	0	1
34	ASISTENT MEDICAL	PL	1	1	0	1
35	ASISTENT MEDICAL DEBUTANT	PL	1	1	0	1
36	ASISTENT MEDICAL DEBUTANT	PL	1	1	0	1
37	ASISTENT MEDICAL DEBUTANT	PL	1	1	0	1
38	INFIRMIERA	M	1	1	1	0
39	INFIRMIERA	M	1	1	1	0

40	INFIRMIERA	M	1	1	1	0
41	INFIRMIERA	M	1	1	1	0
42	INFIRMIERA	M	1	1	1	0
43	INFIRMIERA	M	1	1	1	0
44	INFIRMIERA	M	1	1	1	0
45	INFIRMIERA	M	1	1	1	0
46	INFIRMIERA	M	1	1	1	0
47	INFIRMIERA	M	1	1	1	0
48	INFIRMIERA	M	1	1	0	1
49	INGRIJITOARE	G/M	1	1	1	0
50	INGRIJITOARE	G/M	1	1	1	0
51	INGRIJITOARE	G/M	1	1	1	0
52	INGRIJITOARE	G/M	1	1	0	1
53	INGRIJITOARE	G/M	1	1	0	1
54	INGRIJITOARE	G/M	1	1	0	1
IV.SECTIA MEDICINA INTERNA CRONICI-30 paturi			23	16	7	
55	MEDIC SEF SECTIE ,GR.I	S	1	1	0	1
56	MEDIC PRIMAR sef sectie cu delegatie	S	1	1	1	0
57	MEDIC REZIDENT	S	1	1	1	0
58	KINETOTERAPEUT	S	1	1	0	1
59	ASISTENT MEDICAL PRINCIPAL SEF cu delegatie	PL	1	1	1	0
60	ASISTENT MEDICAL PRINCIPAL	S	1	1	1	0
61	ASISTENT MEDICAL PRINCIPAL	PL	1	1	1	0
62	ASISTENT MEDICAL PRINCIPAL	PL	1	1	1	0
63	ASISTENT MEDICAL PRINCIPAL	PL	1	1	1	0
64	ASISTENT MEDICAL	PL	1	1	1	0
65	ASISTENT MEDICAL DEBUTANT	PL	1	1	0	1
66	INFIRMIERA	M	1	1	1	0
67	INFIRMIERA	M	1	1	1	0
68	INFIRMIERA	M	1	1	1	0
69	INFIRMIERA	M	1	1	1	0
70	INFIRMIERA	M	1	1	1	0
71	INFIRMIERA	M	1	1	1	0
72	INFIRMIERA	M	1	1	1	0
73	INFIRMIERA	M	1	1	0	1
74	INFIRMIERA	M	1	1	0	1
75	INGRIJITOARE	M	1	1	1	0
76	INGRIJITOARE	G/M	1	1	0	1
77	INGRIJITOARE	G/M	1	1	0	1
V. COMPARTIMENT PEDIATRIE-20 paturi			23	16	7	
78	MEDIC SPECIALIST	S	1	1	1	0
79	MEDIC SPECIALIST	S	1	1	1	0
80	MEDIC REZIDENT	S	1	1	1	0
81	PSIHOLOG PRACTICANT	S	1	1	1	0
82	ASISTENT MEDICAL PRINCIPAL	PL	1	1	1	0
83	ASISTENT MEDICAL PRINCIPAL	PL	1	1	1	0
84	ASISTENT MEDICAL PRINCIPAL	PL	1	1	1	0
85	ASISTENT MEDICAL PRINCIPAL	PL	1	1	1	0
86	ASISTENT MEDICAL PRINCIPAL	PL	1	1	1	0
87	ASISTENT MEDICAL PRINCIPAL	PL	1	1	1	0
88	ASISTENT MEDICAL PRINCIPAL	PL	1	1	1	0
89	ASISTENT MEDICAL	PL	1	1	0	1
V.1 POSTURI FIXE-BUCATARIE DIETETICA						
90	ASISTENT MEDICAL	PL	1	1	1	0
V.2 POSTURI FIXE-ATI						
91	ASISTENT MEDICAL	PL	1	1	0	1
V.3 POSTURI FIXE-TRIAJ BOLNAVI						
92	ASISTENT MEDICAL	PL	1	1	0	1

93	INFIRMIERA	M	1	1	1	0
94	INFIRMIERA	M	1	1	1	0
95	INFIRMIERA	M	1	1	1	0
96	INFIRMIERA	M	1	1	1	0
97	INFIRMIERA *	M	1	1	0	1
98	INGRIJITOARE	G/M	1	1	0	1
99	INGRIJITOARE	G/M	1	1	0	1
100	INGRIJITOARE	G/M	1	1	0	1
VI. SECTIA OBSTETRICA GINECOLOGIE-35 paturi			41	28	13	
101	MEDIC SEF SECTIE, GR. I	S	1	1	0	1
102	MEDIC PRIMAR sef sectie cu delegatie	S	1	1	1	0
103	MEDIC PRIMAR	S	1	1	1	0
104	MEDIC PRIMAR	S	1	1	1	0
105	MEDIC REZIDENT	S	1	1	1	0
106	ASISTENT MEDICAL PRINCIPAL SEF cu delegatie	PL	1	1	1	0
107	ASISTENT MEDICAL PRINCIPAL	PL	1	1	1	0
108	ASISTENT MEDICAL PRINCIPAL	PL	1	1	1	0
109	ASISTENT MEDICAL PRINCIPAL	PL	1	1	1	0
110	ASISTENT MEDICAL PRINCIPAL	PL	1	1	1	0
111	ASISTENT MEDICAL PRINCIPAL	PL	1	1	0	1
112	ASISTENT MEDICAL PRINCIPAL	PL	1	1	0	1
113	ASISTENT MEDICAL PRINCIPAL	PL	1	1	0	1
114	ASISTENT MEDICAL	PL	1	1	0	1
115	ASISTENT MEDICAL	PL	1	1	0	1
116	ASISTENT MEDICAL DEBUTANT	PL	1	1	0	1
117	INFIRMIERA	M	1	1	1	0
118	INFIRMIERA	M	1	1	1	0
119	INFIRMIERA	M	1	1	1	0
120	INFIRMIERA	M	1	1	1	0
121	INFIRMIERA	M	1	1	1	0
122	INFIRMIERA	M	1	1	1	0
123	INGRIJITOARE	G/M	1	1	1	0
124	INGRIJITOARE	G/M	1	1	1	0
125	INGRIJITOARE	G/M	1	1	1	0
126	INGRIJITOARE	G/M	1	1	0	1
VI.1 SALA DE NASTERI-POSTURI FIXE						
127	MEDIC PRIMAR rezervat	S	1	1	0	1
128	ASISTENT MEDICAL PRINCIPAL	PL	1	1	1	0
129	ASISTENT MEDICAL PRINCIPAL	PL	1	1	1	0
130	ASISTENT MEDICAL PRINCIPAL	PL	1	1	1	0
131	ASISTENT MEDICAL PRINCIPAL	PL	1	1	1	0
VI.2 SALA DE OPERATII-POSTURI FIXE						
132	ASISTENT MEDICAL PRINCIPAL	PL	1	1	1	0
133	ASISTENT MEDICAL PRINCIPAL	PL	1	1	1	0
134	ASISTENT MEDICAL PRINCIPAL	PL	1	1	1	0
135	ASISTENT MEDICAL PRINCIPAL	PL	1	1	1	0
136	INFIRMIERA	M	1	1	1	0
137	INFIRMIERA	M	1	1	0	1
138	INFIRMIERA	M	1	1	0	1
139	INGRIJITOARE	G/M	1	1	1	0
140	INGRIJITOARE	G/M	1	1	0	1
141	INGRIJITOARE	G/M	1	1	0	1
VII.COMPARTIMENT NEONATOLOGIE-12 paturi			20	14	6	
142	MEDIC REZIDENT	S	1	1	1	0
143	MEDIC REZIDENT	S	1	1	1	0
144	ASISTENT MEDICAL PRINCIPAL	PL	1	1	1	0
145	ASISTENT MEDICAL PRINCIPAL	PL	1	1	1	0
146	ASISTENT MEDICAL PRINCIPAL	PL	1	1	1	0

147	ASISTENT MEDICAL PRINCIPAL	PL	1	1	1	0
148	ASISTENT MEDICAL PRINCIPAL	PL	1	1	1	0
149	ASISTENT MEDICAL PRINCIPAL	PL	1	1	1	0
150	ASISTENT MEDICAL PRINCIPAL	PL	1	1	1	0
151	ASISTENT MEDICAL	PL	1	1	0	1
152	ASISTENT MEDICAL	PL	1	1	0	1
153	ASISTENT MEDICAL	PL	1	1	0	1
154	ASISTENT MEDICAL DEBUTANT	PL	1	1	0	1
155	ASISTENT MEDICAL DEBUTANT	PL	1	1	0	1
156	INFIRMIERA	M	1	1	1	0
157	INFIRMIERA	M	1	1	1	0
158	INFIRMIERA	M	1	1	1	0
159	INFIRMIERA	M	1	1	1	0
160	INFIRMIERA	M	1	1	1	0
161	INGRIJITOARE	G/M	1	1	0	1

VIII.SECTIA CHIRURGIE GENERALA-40 paturi din care 5 paturi COMPARTIMENT ORTOPEDIE SI TRAUMATOLOGIE

			35	25	10	
162	MEDIC SEF SECTIE GR. I	S	1	1	0	1
163	MEDIC PRIMAR cu delegatie	S	1	1	1	0
164	MEDIC PRIMAR rezervat	S	1	1	0	1
165	MEDIC REZIDENT	S	1	1	1	0
166	MEDIC REZIDENT	S	1	1	1	0
167	MEDIC SPECIALIST	S	1	1	1	0
168	MEDIC SPECIALIST	S	1	1	1	0
169	ASISTENT MEDICAL PRINCIPAL SEF	PL	1	1	1	0
170	ASISTENT MEDICAL PRINCIPAL	PL	1	1	1	0
171	ASISTENT MEDICAL PRINCIPAL	PL	1	1	1	0
172	ASISTENT MEDICAL PRINCIPAL	PL	1	1	1	0
173	ASISTENT MEDICAL PRINCIPAL	PL	1	1	1	0
174	ASISTENT MEDICAL PRINCIPAL	PL	1	1	1	0
175	ASISTENT MEDICAL PRINCIPAL	PL	1	1	1	0
176	ASISTENT MEDICAL PRINCIPAL	PL	1	1	1	0
177	ASISTENT MEDICAL	PL	1	1	1	0
178	ASISTENT MEDICAL PRINCIPAL	PL	1	1	1	0
179	ASISTENT MEDICAL PRINCIPAL	PL	1	1	1	0
180	ASISTENT MEDICAL	PL	1	1	0	1
181	ASISTENT MEDICAL	PL	1	1	0	1
182	ASISTENT MEDICAL DEBUTANT	PL	1	1	0	1
183	ASISTENT MEDICAL DEBUTANT	PL	1	1	0	1
184	INFIRMIERA	M	1	1	1	0
185	INFIRMIERA	M	1	1	1	0
186	INFIRMIERA	M	1	1	1	0
187	INFIRMIERA	M	1	1	1	0
188	INFIRMIERA	M	1	1	1	0
189	INFIRMIERA	M	1	1	0	1
190	INFIRMIERA	M	1	1	0	1
191	INGRIJITOARE	G/M	1	1	1	0
192	INGRIJITOARE	G/M	1	1	1	0
193	INGRIJITOARE	G/M	1	1	1	0
194	INGRIJITOARE	G/M	1	1	1	0
195	INGRIJITOARE	G/M	1	1	0	1
196	INGRIJITOARE	G/M	1	1	0	1

IX. SECTIA BOLI INFECTIOASE-25 paturi plus COMPARTIMENT DERMATOVENEROLOGIE 5 paturi-total 30 paturi

			24	17	7	
197	MEDIC SEF SECTIE GR.I	S	1	1	1	0
198	MEDIC SPECIALIST	S	1	1	1	0
199	MEDIC SPECIALIST	S	1	1	1	0
200	ASISTENT MEDICAL PRINCIPAL SEF cu delegatie	PL	1	1	1	0

201	ASISTENT MEDICAL PRINCIPAL	PL	1	1	1	0
202	ASISTENT MEDICAL PRINCIPAL	PL	1	1	1	0
203	ASISTENT MEDICAL PRINCIPAL	PL	1	1	1	0
204	ASISTENT MEDICAL PRINCIPAL	PL	1	1	1	0
205	ASISTENT MEDICAL PRINCIPAL	PL	1	1	1	0
206	ASISTENT MEDICAL PRINCIPAL	PL	1	1	1	0
207	ASISTENT MEDICAL PRINCIPAL	PL	1	1	0	1
208	ASISTENT MEDICAL	PL	1	1	1	0
209	ASISTENT MEDICAL	PL	1	1	0	1
210	ASISTENT MEDICAL	PL	1	1	0	1
211	ASISTENT MEDICAL DEBUTANT	PL	1	1	0	1
212	INFIRMIERA	M	1	1	1	0
213	INFIRMIERA	M	1	1	1	0
214	INFIRMIERA	M	1	1	1	0
215	INFIRMIERA	M	1	1	1	0
216	INFIRMIERA	M	1	1	1	0
217	INFIRMIERA	M	1	1	1	0
218	INGRIJITOARE	G/M	1	1	0	1
219	INGRIJITOARE	G/M	1	1	0	1
220	INGRIJITOARE	G/M	1	1	0	1
X. SECTIA NEUROLOGIE-25 paturi						
				28	16	12
221	MEDIC SEF SECTIE GR.I	S	1	1	1	0
222	MEDIC SPECIALIST	S	1	1	0	1
223	MEDIC REZIDENT	S	1	1	1	0
224	ASISTENT MEDICAL PRINCIPAL SEF cu delegatie	PL	1	1	1	0
225	ASISTENT MEDICAL PRINCIPAL	PL	1	1	1	0
226	ASISTENT MEDICAL PRINCIPAL	PL	1	1	1	0
227	ASISTENT MEDICAL PRINCIPAL	S	1	1	1	0
228	ASISTENT MEDICAL PRINCIPAL	PL	1	1	1	0
229	ASISTENT MEDICAL PRINCIPAL	PL	1	1	1	0
230	ASISTENT MEDICAL PRINCIPAL	PL	1	1	1	0
231	ASISTENT MEDICAL PRINCIPAL	PL	1	1	1	0
232	ASISTENT MEDICAL	PL	1	1	0	1
233	ASISTENT MEDICAL	PL	1	1	0	1
234	ASISTENT MEDICAL	PL	1	1	0	1
235	ASISTENT MEDICAL DEBUTANT	PL	1	1	0	1
236	INFIRMIERA	M	1	1	1	0
237	INFIRMIERA	M	1	1	1	0
238	INFIRMIERA	M	1	1	1	0
239	INFIRMIERA	M	1	1	1	0
240	INFIRMIERA *	M	1	1	0	1
241	INFIRMIERA	M	1	1	0	1
242	INFIRMIERA	M	1	1	0	1
243	INFIRMIERA	M	1	1	0	1
244	INFIRMIERA	M	1	1	0	1
245	INFIRMIERA	M	1	1	0	1
246	INGRIJITOARE	G/M	1	1	1	0
247	INGRIJITOARE	G/M	1	1	1	0
248	INGRIJITOARE	G/M	1	1	0	1
XI.SECTIA A.T.I.-15 paturi						
				38	22	16
XI.1 TERAPIE INTENSIVA-6 paturi				21	11	10
249	MEDIC SEF SECTIE GR. I	S	1	1	0	1
250	MEDIC SPECIALIST sef sectie cu delegatie	S	1	1	1	0
251	MEDIC REZIDENT	S	1	1	1	0
252	ASISTENT MEDICAL PRINCIPAL SEF cu delegatie	S	1	1	1	0
253	ASISTENT MEDICAL PRINCIPAL	S	1	1	1	0
254	ASISTENT MEDICAL PRINCIPAL	PL	1	1	1	0
255	ASISTENT MEDICAL PRINCIPAL	PL	1	1	1	0

256	ASISTENT MEDICAL PRINCIPAL	PL	1	1	1	0
257	ASISTENT MEDICAL PRINCIPAL	PL	1	1	0	1
258	ASISTENT MEDICAL PRINCIPAL	PL	1	1	0	1
259	ASISTENT MEDICAL	PL	1	1	0	1
260	INFIRMIERA	M	1	1	1	0
261	INFIRMIERA	M	1	1	1	0
262	INFIRMIERA	M	1	1	1	0
263	INFIRMIERA	M	1	1	1	0
264	INFIRMIERA	M	1	1	0	1
265	INGRIJITOARE	G/M	1	1	0	1
266	INGRIJITOARE	G/M	1	1	0	1
267	BRANCARDIER	G/M	1	1	0	1
268	BRANCARDIER	G/M	1	1	0	1
269	BRANCARDIER	G/M	1	1	0	1
XI.2 TERAPIE INTENSIVA INGRIJIRE POSTOPERATORIE-9 paturi			16	11	5	
270	MEDIC REZIDENT	S	1	1	1	0
271	MEDIC REZIDENT	S	1	1	1	0
272	MEDIC REZIDENT	S	1	1	1	0
273	ASISTENT MEDICAL PRINCIPAL	PL	1	1	1	0
274	ASISTENT MEDICAL PRINCIPAL	S	1	1	1	0
275	ASISTENT MEDICAL PRINCIPAL	S	1	1	1	0
276	ASISTENT MEDICAL PRINCIPAL	PL	1	1	1	0
277	ASISTENT MEDICAL PRINCIPAL	S	1	1	1	0
278	ASISTENT MEDICAL PRINCIPAL	PL	1	1	0	1
279	ASISTENT MEDICAL	PL	1	1	0	1
280	ASISTENT MEDICAL	PL	1	1	0	1
281	INFIRMIERA	M	1	1	1	0
282	INFIRMIERA	M	1	1	1	0
283	INFIRMIERA	M	1	1	1	0
284	INFIRMIERA	M	1	1	0	1
285	INGRIJITOARE	G/M	1	1	0	1
XI.3 UNITATE DE TRANSFUZII DE SANGE-POST FIX			1	0	1	
286	ASISTENT MEDICAL	PL	1	1	0	1
XII.COMPARTIMENT PSIHIATRIE-18 paturi			17	16	1	
287	MEDIC PRIMAR	S	1	1	1	0
288	MEDIC SPECIALIST	S	1	1	0	1
289	MEDIC REZIDENT	S	1	1	1	0
290	ASISTENT MEDICAL PRINCIPAL	PL	1	1	1	0
291	ASISTENT MEDICAL PRINCIPAL	PL	1	1	1	0
292	ASISTENT MEDICAL PRINCIPAL	PL	1	1	1	0
293	ASISTENT MEDICAL PRINCIPAL	S	1	1	1	0
294	ASISTENT MEDICAL PRINCIPAL	PL	1	1	1	0
295	ASISTENT MEDICAL	PL	1	1	1	0
296	INFIRMIERA	M	1	1	1	0
297	INFIRMIERA	M	1	1	1	0
298	INFIRMIERA	M	1	1	1	0
299	INFIRMIERA	M	1	1	1	0
300	INFIRMIERA	M	1	1	1	0
301	INGRIJITOARE	G/M	1	1	1	0
302	INGRIJITOARE	G/M	1	1	1	0
303	BRANCARDIER	G/M	1	1	1	0
XIII.COMPARTIMENT PRIMIRI URGENTE-POSTURI FIXE			42	22	20	
304	MEDIC SPECIALIST SEF CPU GRADUL I	S	1	1	0	1
305	MEDIC SPECIALIST	S	1	1	1	0
306	MEDIC	S	1	1	1	0
307	MEDIC SPECIALIST sef CPU cu delegatie	S	1	1	1	0

308	MEDIC SPECIALIST	S	1	1	0	1
309	MEDIC SPECIALIST	S	1	1	0	1
310	ASISTENT SOCIAL	PL	1	1	1	0
311	ASISTENT MEDICAL PRINCIPAL	PL	1	1	1	0
312	ASISTENT MEDICAL PRINCIPAL	S	1	1	1	0
313	ASISTENT MEDICAL PRINCIPAL	PL	1	1	1	0
314	ASISTENT MEDICAL PRINCIPAL	PL	1	1	0	1
315	ASISTENT MEDICAL PRINCIPAL	PL	1	1	0	1
316	ASISTENT MEDICAL	PL	1	1	1	0
317	ASISTENT MEDICAL	PL	1	1	1	0
318	ASISTENT MEDICAL	PL	1	1	1	0
319	ASISTENT MEDICAL	PL	1	1	1	0
320	ASISTENT MEDICAL	PL	1	1	0	1
321	ASISTENT MEDICAL	PL	1	1	0	1
322	ASISTENT MEDICAL	PL	1	1	0	1
323	ASISTENT MEDICAL	PL	1	1	0	1
324	ASISTENT MEDICAL DEBUTANT	PL	1	1	0	1
325	ASISTENT MEDICAL DEBUTANT	PL	1	1	0	1
326	REGISTRATOR MEDICAL PRINCIPAL	M	1	1	1	0
327	REGISTRATOR MEDICAL	M	1	1	1	0
328	REGISTRATOR MEDICAL PRINCIPAL	M	1	1	0	1
329	REGISTRATOR MEDICAL	M	1	1	1	0
330	REGISTRATOR MEDICAL	M	1	1	1	0
331	INFIRMIERA	G/M	1	1	0	1
332	INFIRMIERA	G/M	1	1	0	1
333	INFIRMIERA	G/M	1	1	0	1
334	INFIRMIERA	G/M	1	1	0	1
335	INFIRMIERA	G/M	1	1	0	1
336	INGRIJITOARE	G	1	1	1	0
337	INGRIJITOARE	G	1	1	1	0
338	INGRIJITOARE	G	1	1	0	1
339	INGRIJITOARE	G	1	1	0	1
340	INGRIJITOARE	G	1	1	0	1
341	BRANCARDIER	G	1	1	1	0
342	BRANCARDIER	G	1	1	1	0
343	BRANCARDIER	G	1	1	1	0
344	BRANCARDIER	G	1	1	1	0
345	BRANCARDIER	G	1	1	1	0
XIV. STERILIZARE-POSTURI FIXE				6	5	1
346	ASISTENT MEDICAL PRINCIPAL SEF cu delegatie	PL	1	1	1	0
347	ASISTENT MEDICAL PRINCIPAL	PL	1	1	1	0
348	ASISTENT MEDICAL PRINCIPAL	PL	1	1	1	0
349	ASISTENT MEDICAL	PL	1	1	1	0
350	ASISTENT MEDICAL	PL	1	1	1	0
351	INGRIJITOARE	G	1	1	0	1
XV. BLOC OPERATOR -POSTURI FIXE				15	10	5
352	MEDIC SPECIALIST	S	1	1	1	0
353	ASISTENT MEDICAL PRINCIPAL SEF cu delegatie	PL	1	1	1	0
354	ASISTENT MEDICAL PRINCIPAL	PL	1	1	1	0
355	ASISTENT MEDICAL PRINCIPAL	PL	1	1	1	0
356	ASISTENT MEDICAL PRINCIPAL	PL	1	1	1	0
357	ASISTENT MEDICAL PRINCIPAL	PL	1	1	1	0
358	INFIRMIERA	M	1	1	0	1
359	INFIRMIERA	M	1	1	0	1
360	INFIRMIERA	M	1	1	0	1
361	INGRIJITOARE	G	1	1	1	0
362	INGRIJITOARE	G	1	1	1	0
363	INGRIJITOARE	G	1	1	0	1

364	BRANCARDIER	G	1	1	1	0
365	BRANCARDIER	G	1	1	1	0
366	BRANCARDIER	G	1	1	0	1
XVI.FARMACIA CU CIRCUIT INCHIS						
			11	8	3	
367	FARMACIST SEF GR. II	S	1	1	1	0
368	FARMACIST SPECIALIST	S	1	1	1	0
369	ASISTENT MEDICAL PRINCIPAL	PL	1	1	0	1
370	ASISTENT MEDICAL PRINCIPAL	PL	1	1	1	0
371	ASISTENT MEDICAL PRINCIPAL	PL	1	1	1	0
372	ASISTENT MEDICAL PRINCIPAL	PL	1	1	1	0
373	ASISTENT MEDICAL	PL	1	1	0	1
374	ECONOMIST GR. I	S	1	1	1	0
375	OPERATOR CONTROLOR DATE II	M	1	1	0	1
376	INGRIJITOARE	G	1	1	1	0
377	INGRIJITOARE	G	1	1	1	0
XVII.LABORATOR ANALIZE MEDICALE CU PUNCT DE LUCRU IN AMBULATORIUL INTEGRAT-POSTURI FIXE						
			21	16	5	
378	MEDIC SPECIALIST SEF LABORATOR GR. II	S	1	1	0	1
379	MEDIC REZIDENT	S	1	1	1	0
380	CHIMIST PRINCIPAL SEF LABORATOR GR. II cu deleg.	S	1	1	1	0
381	BIOLOG PRINCIPAL	S	1	1	1	0
382	CHIMIST SPECIALIST	S	1	1	1	0
383	BIOLOG	S	1	1	1	0
384	BIOLOG DEBUTANT	S	1	1	1	1
385	ASISTENT MEDICAL PRINCIPAL SEF cu delegatie	PL	1	1	1	0
386	ASISTENT MEDICAL PRINCIPAL	PL	1	1	1	0
387	ASISTENT MEDICAL PRINCIPAL	PL	1	1	1	0
388	ASISTENT MEDICAL PRINCIPAL	PL	1	1	1	0
389	ASISTENT MEDICAL PRINCIPAL	PL	1	1	1	0
390	ASISTENT MEDICAL PRINCIPAL	PL	1	1	0	0
391	ASISTENT MEDICAL	PL	1	1	1	0
392	ASISTENT MEDICAL	PL	1	1	0	1
393	ASISTENT MEDICAL	PL	1	1	0	1
394	ASISTENT MEDICAL DEBUTANT	PL	1	1	1	0
395	REGISTRATOR MEDICAL PRINCIPAL	M	1	1	1	0
396	INGRIJITOR	G	1	1	1	0
397	INGRIJITOR	G	1	1	1	0
398	INGRIJITOR	G	1	1	0	1
XVIII. LABORATOR RADIOLOGIE SI IMAGISTICA MEDICALA CU PUNCT DE LUCRU IN AMBULATORIU INTEGRAT-POSTURI FIXE						
			13	9	4	
399	MEDIC SEF LABORATOR GR. I	S	1	1	1	0
400	MEDIC SPECIALIST	S	1	1	1	0
401	MEDIC REZIDENT	S	1	1	1	0
402	ASISTENT MEDICAL PRINCIPAL SEF cu delegatie	PL	1	1	1	0
403	ASISTENT MEDICAL PRINCIPAL	PL	1	1	1	0
404	ASISTENT MEDICAL PRINCIPAL	PL	1	1	1	0
405	ASISTENT MEDICAL	PL	1	1	1	0
406	ASISTENT MEDICAL	PL	1	1	0	1
407	ASISTENT MEDICAL DEBUTANT	PL	1	1	0	1
408	SORA MEDICALA PRINCIPALA	M	1	1	1	0
409	INGRIJITOR	G	1	1	1	0
410	INGRIJITOR	G	1	1	0	1
411	INGRIJITOR	G	1	1	0	1
XIX. SERVICIU ANATOMIE PATOLOGICA CU COMPARTIMENT CITOLOGIE, HISTOPATOLOGIE ,PROSECTURA						
			8	3	5	
412	MEDIC PRIMAR	S	1	1	1	0

413	MEDIC PRIMAR	S	1	1	0	1
414	BIOCHIMIST	S	1	1	0	1
415	SORA MEDICALA PRINCIPALA	M	1	1	1	0
416	SORA MEDICALA PRINCIPALA	M	1	1	0	1
417	ASISTENT MEDICAL PRINCIPAL	PL	1	1	0	1
418	AUTOPSIER	G	1	1	1	0
419	INGRIJITOR	G	1	1	0	1
XX. LABORATOR EXPLORARI FUNCTIONALE-POST FIX						
				1	0	1
420	ASISTENT MEDICAL	PL	1	1	0	1
XXI. COMPARTIMENT DE PREVENIRE SI CONTROL AL INFECTIILOR NOSOCOMIALE						
				3	2	1
421	MEDIC PRIMAR	S	1	1	0	1
422	ASISTENT MEDICAL PRINCIPAL	PL	1	1	1	0
423	INFIRMIER/AGENT DDD	G	1	1	1	0
XXII. COMPARTIMENT DE EVALUARE SI STATISTICA MEDICALA-POSTURI FIXE						
				4	3	1
424	BIOINGINER MEDICAL SPECIALIST	S	1	1	1	0
425	BIOINGINER MEDICAL SPECIALIST	S	1	1	1	0
426	ASISTENT MEDICAL PRINCIPAL	PL	1	1	1	0
427	ASISTENT MEDICAL	PL	1	1	0	1
XXIII.CABINET DIABET ZAHARAT,NUTRITIE SI BOLI METABOLICE-POSTURI FIXE						
				4	2	2
428	MEDIC SPECIALIST	S	1	1	1	0
429	MEDIC SPECIALIST	S	1	1	0	1
430	ASISTENT MEDICAL PRINCIPAL	PL	1	1	1	0
431	ASISTENT MEDICAL PRINCIPAL	PL	1	1	0	1
XXIV. CABINET PLANIFICARE FAMILIALA-POSTURI FIXE						
				2	1	1
432	MEDIC PRIMAR	S	1	1	1	0
433	ASISTENT MEDICAL	PL	1	1	0	1
XXV.DISPENSAR T.B.C.						
				6	5	1
434	MEDIC PRIMAR	S	1	1	0	1
435	MEDIC PRIMAR	S	1	1	1	0
436	ASISTENT MEDICAL PRINCIPAL	PL	1	1	1	0
437	ASISTENT MEDICAL PRINCIPAL	PL	1	1	1	0
438	ASISTENT MEDICAL PRINCIPAL	PL	1	1	1	0
439	INGRIJITOR	G	1	1	1	0
XXVI .BUCATARIE DIETETICA-POSTURI FIXE						
				2	1	1
440	ASISTENT MEDICAL PRINCIPAL	PL		1	1	0
441	ASISTENT MEDICAL PRINCIPAL	PL		1	0	1
XXVII. SPALATORIE						
				6	3	3
442	SPALATOREASA CU GESTIUNE	M	1	1	1	0
443	SPALATOREASA	M	1	1	1	0
444	SPALATOREASA	M	1	1	1	0
445	SPALATOREASA	M	1	1	0	1
446	SPALATOREASA	M	1	1	0	1
447	SPALATOREASA	M	1	1	0	1
XXVIII. MUNCITORI						
				41	31	10
XXVIII.1MUNCITORI INTRETINERE CLADIRI,INSTALATII DE APA LUMINA SI INCALZIRE						
				7	6	1
	TAMPLAR					
448	MUNCITOR CALIFICAT TR. IV ELECTRICIAN DE INTRETINERE SI REPARATII	G	1	1	1	0
449	MUNCITOR CALIFICAT TR.III	G	1	1	1	0

450	MUNCITOR CALIFICAT TR.III	G	1	1	1	0
	ZIDAR					
451	MUNCITOR CALIFICAT TR. III*	G	1	1	0	1
	SUDOR					
452	MUNCITOR CALIFICAT TR. III	G	1	1	1	0
	INSTALATII DE APA SI CANAL					
453	MUNCITOR CALIFICAT TR.III	G	1	1	1	0
454	MUNCITOR CALIFICAT TR.IV		1	1	1	0
XXVIII.2MUNCITORI BLOC ALIMENTAR						
				8	6	2
	BUCATAR					
455	MUNCITOR CALIFICAT TR. IV	M	1	1	1	0
456	MUNCITOR CALIFICAT TR. IV	M	1	1	1	0
	MUNCITOR NECALIFICAT TR.I					
457	MUNCITOR NECALIFICAT TR.I	G	1	1	1	0
458	MUNCITOR NECALIFICAT TR.I	G	1	1	1	0
459	MUNCITOR NECALIFICAT TR.I *	G	1	1	0	1
460	MUNCITOR NECALIFICAT TR.I	G	1	1	1	0
461	MUNCITOR NECALIFICAT TR.I	G	1	1	1	0
462	MUNCITOR NECALIFICAT TR.I	G	1	1	0	1
XXVIII.3MUNCITORI CARE DESERVESC CENTRALA TERMICA-POSTURI FIXE						
				5	5	0
463	MUNCITOR CALIFICAT TR. I	G	1	1	1	0
464	MUNCITOR CALIFICAT TR. II	G	1	1	1	0
465	MUNCITOR CALIFICAT TR. I	G	1	1	1	0
466	MUNCITOR CALIFICAT TR. IV	G	1	1	1	0
467	MUNCITOR CALIFICAT TR. III	G	1	1	1	0
XXVIII.4 MUNCITORI CARE DESERVESC STATIA CENTRALA DE OXIGEN-POSTURI FIXE						
				5	2	3
468	MUNCITOR CALIFICAT TR. IV	G	1	1	1	0
469	MUNCITOR CALIFICAT TR. IV	G	1	1	1	0
470	MUNCITOR CALIFICAT TR. IV	G	1	1	0	1
471	MUNCITOR CALIFICAT TR. IV	G	1	1	0	1
472	MUNCITOR CALIFICAT TR. IV	G	1	1	0	1
XXVIII.5MUNCITORI CARE DESERVESC LIFTUL CU INSOTITOR-POSTURI FIXE						
				5	5	0
473	MUNCITOR CALIFICAT TR. IV	G	1	1	1	0
474	MUNCITOR CALIFICAT TR. IV	G	1	1	1	0
475	MUNCITOR CALIFICAT TR. IV	G	1	1	1	0
476	MUNCITOR CALIFICAT TR. IV	G	1	1	1	0
477	MUNCITOR CALIFICAT TR. IV	G	1	1	1	0
XXVIII.6MUNCITORI CARE DESERVESC CENTRALA TELEFONICA-POSTURI FIXE						
				2	1	1
478	MUNCITOR CALIFICAT TR. III	M	1	1	1	0
479	MUNCITOR CALIFICAT TR. III	M	1	1	0	1
XXVIII.7 ACTIVITATEA DE CONDUCERE AUTO						
				2	2	0
480	SOFER TR. II	G	1	1	1	0
481	SOFER TR. II	G	1	1	1	0
XXVIII.8 FRIZER						
				1	0	1
482	MUNCITOR CALIFICAT TR. IV	G	1	1	0	1
XXVIII.9 INTRETINERE INVENTAR MOALE						
				1	1	0
483	MUNCITOR CALIFICAT TR. IV	G	1	1	1	0
XXVIII.10 INTRETINERE SPATII VERZI						
				1	1	0
484	MUNCITOR NECALIFICAT TR.I	G	1	1	1	0

XXVIII.11 APROVIZIONARE,MANIPULARE ,DEPOZITARE SI DESERVIRE MIJLOACE DE TRANSPORT								
						1	1	0
485	MUNCITOR NECALIFICAT TR.I	G	1	1	1	1	0	0
XXVIII.12 DESERVIRE GRUP ELECTROGEN								
	ELECTRICIAN					2	0	2
486	MUNCITOR CALIFICAT TR. IV	G	1	1	1	0	1	1
487	MUNCITOR CALIFICAT TR. IV	G	1	1	1	0	1	1
XXVIII.13 MUNCITORI CARE DESERVESC STATIA DE POMPE								
						1	1	0
488	MUNCITOR CALIFICAT TR. IV	G	1	1	1	1	0	0
XXIX . PERSONAL CLERICAL								
						0.5	0	0.5
489	PREOT GR.II	S	0.5	0.5	0.5	0	0.5	0.5
XXX. PERSONAL T.E.S.A.								
						15	12	3
XXX.1 COMPARTIMENT RUNOS								
						3	3	0
490	INSPECTOR DE SPECIALITATE GR I	S	1	1	1	1	0	0
491	REFERENT DE SPECIALITATE GR I	S	1	1	1	1	0	0
492	REFERENT IA	M	1	1	1	1	0	0
XXX.2 COMPARTIMENT FINANCIAR CONTABIL								
						3	2	1
493	ECONOMIST GR.I rezervat	S	1	1	1	0	1	1
494	ECONOMIST GR.I	S	1	1	1	1	0	0
495	ECONOMIST GR.I	S	1	1	1	1	0	0
XXX. 3 COMPARTIMENT ACHIZITII PUBLICE, CONTRACTARE								
						1	1	0
496	ECONOMIST IA	S	1	1	1	1	0	0
XXX.4 BIROU ADMINISTRATIV APROVIZIONARE TRANSPORT TEHNIC								
						6	5	1
497	INGINER IA SEF BIROU GRADUL II	S	1	1	1	1	0	0
498	ECONOMIST IA	S	1	1	1	1	0	0
499	ECONOMIST II	S	1	1	1	1	0	0
500	ECONOMIST DEBUTANT	S	1	1	1	1	0	0
501	MAGAZINER TR. I	M	1	1	1	1	0	0
502	INGINER IA- TEHNIC	S	1	1	1	0	1	1
XXX.5 COMPARTIMENT SANATATE SI SEC. A MUNCII ,PSI,PROTECTIE CIVILA SI SITUATII DE URGENTA								
						1	1	0
503	INGINER IA	S	1	1	1	1	0	0
XXX.6 COMPARTIMENT JURIDIC								
						1	0	1
504	CONSILIER JURIDIC GRADUL II	S	1	1	1	0	1	1
XXXI. AMBULATORIUL INTEGRAT CU CABINETE IN SPECIALITATE								
						29	15	14
XXXI.1 CABINET MEDICINA INTERNA								
505	ASISTENT MEDICAL PRINCIPAL	PL	1	1	1	0	1	1
XXXI.2 CABINET O.R.L.								
506	MEDIC REZIDENT	S	1	1	1	1	0	0
507	ASISTENT MEDICAL	PL	1	1	1	0	1	1
XXXI.3CABINET OFTALMOLOGIE								
508	MEDIC PRIMAR	S	1	1	1	1	0	0
509	MEDIC REZIDENT	S	1	1	1	1	0	0
510	ASISTENT MEDICAL PRINCIPAL	PL	1	1	1	1	0	0
XXXI.4 CABINET CHIRURGIE GENERALA								
511	ASISTENT MEDICAL PRINCIPAL	PL	1	1	1	1	0	0
XXXI.5 CABINET OBSTETRICA GINECOLOGIE								
512	ASISTENT MEDICAL PRINCIPAL	PL	1	1	1	1	0	0
XXXI.6 CABINET PEDIATRIE								

513	ASISTENT MEDICAL PRINCIPAL	PL	1	1	1	0
XXXI.7 CABINET NEUROLOGIE						
514	ASISTENT MEDICAL	PL	1	1	0	1
XXXI.8 CABINET DERMATOVENEROLOGIE						
515	ASISTENT MEDICAL	PL	1	1	0	1
XXXI.9 CABINET ENDOCRINOLOGIE						
516	MEDIC SPECIALIST	S	1	1	1	0
517	ASISTENT MEDICAL	PL	1	1	0	1
XXXI.10 CABINET PSIHIATRIE						
518	ASISTENT MEDICAL PRINCIPAL	PL	1	1	0	1
XXXI.11 CABINET RECUPERARE , MEDICINA FIZICA SI BALNEOLOGIE						
519	MEDIC REZIDENT	S	1	1	1	0
520	MEDIC REZIDENT	S	1	1	1	0
521	ASISTENT MEDICAL PRINCIPAL	PL	1	1	1	0
522	ASISTENT MEDICAL PRINCIPAL	PL	1	1	1	0
XXXI.12 CABINET CARDIOLOGIE						
523	ASISTENT MEDICAL	PL	1	1	0	1
XXXI.13 CABINET ORTOPEDIE SI TRAUMATOLOGIE						
524	ASISTENT MEDICAL	PL	1	1	0	1
XXXI.14 CABINET STOMATOLOGIE						
525	MEDIC DENTIST	S	1	1	0	1
526	MEDIC DENTIST	S	1	1	1	0
527	ASISTENT MEDICAL	PL	1	1	0	1
XXXI.15 SALA DE TRATAMENT						
528	ASISTENT MEDICAL	PL	1	1	0	1
XXXI.16 COMPARTIMENT STATISTICA MEDICALA						
529	REGISTRATOR MEDICAL PRINCIPAL	PL	1	1	1	0
XXXI.17 PERSONAL DE CURATENIE						
530	INGRIJITOR	G	1	1	1	0
531	INGRIJITOR	G	1	1	0	1
532	INGRIJITOR	G	1	1	0	1
533	INGRIJITOR	G	1	1	0	1
TOTAL			532.5	351	181.5	

Pentru posturile marcate cu * s-a demarat procedura de concurs ,in vederea ocuparii lor .



Presedinte de sedinta ,
 Liviu Iacob

Secretarul Municipiului Husi,
 jr. Monica Dumitrascu

Monica Dumitrascu